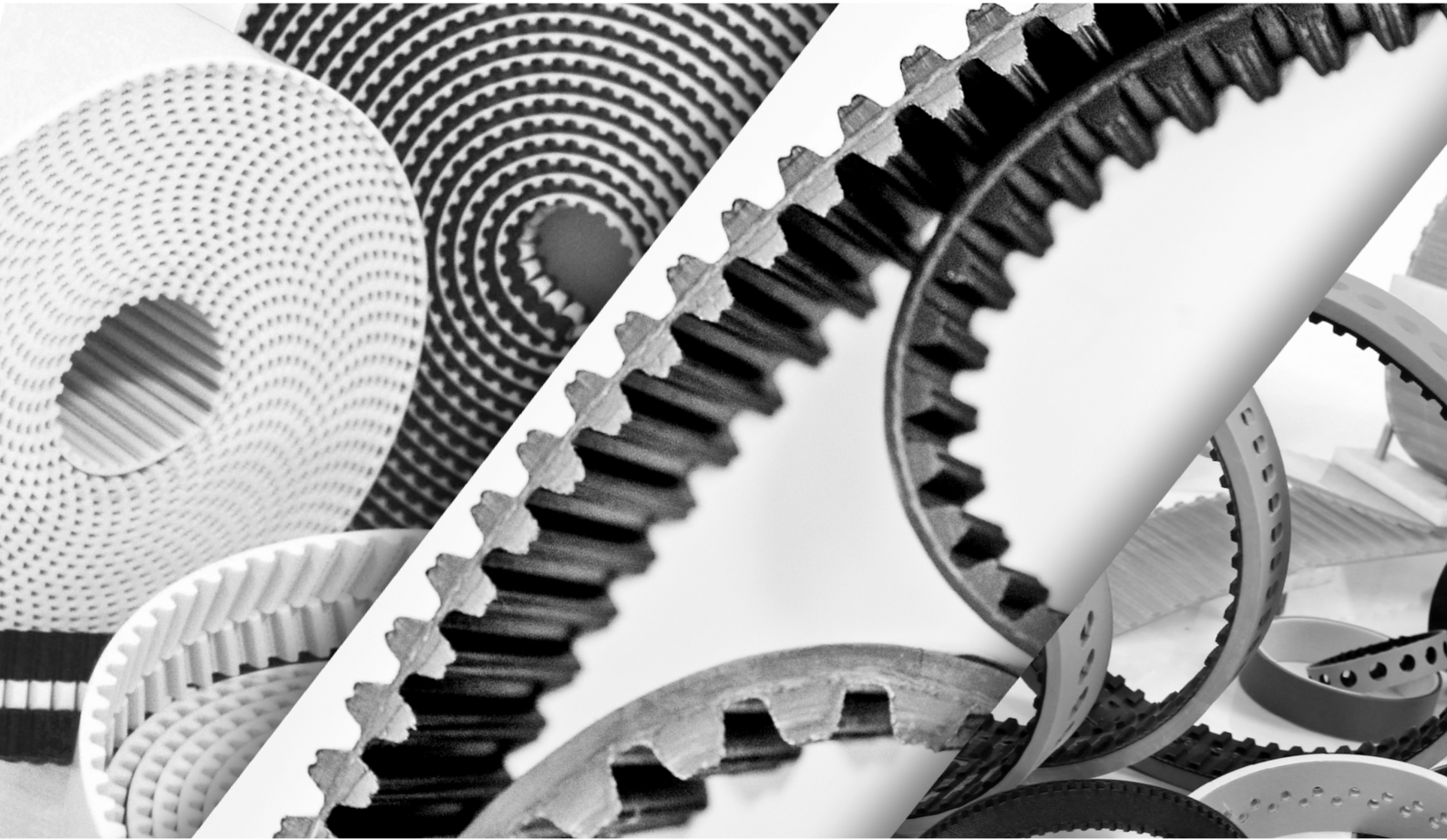




MEGADYNE



COMPANY OVERVIEW

CORPORATE
PRODUCT GUIDE

EN

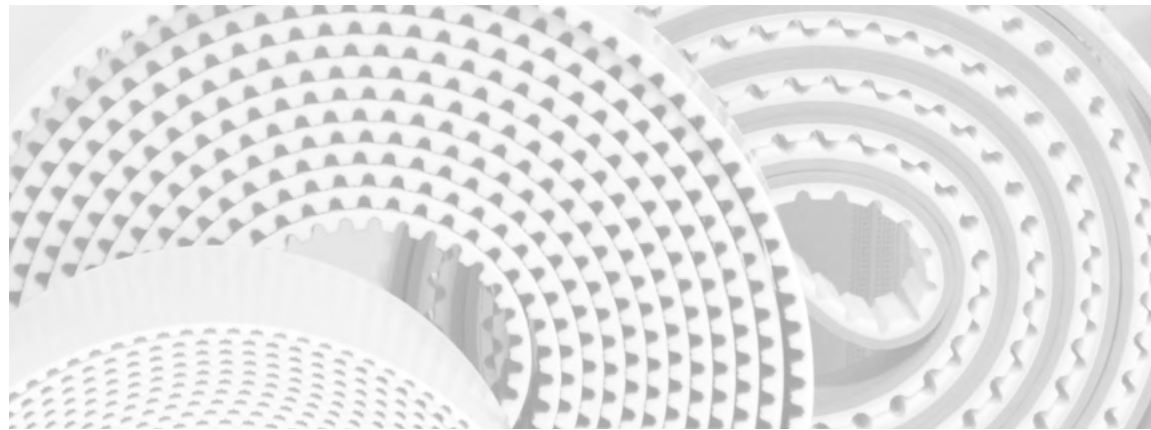
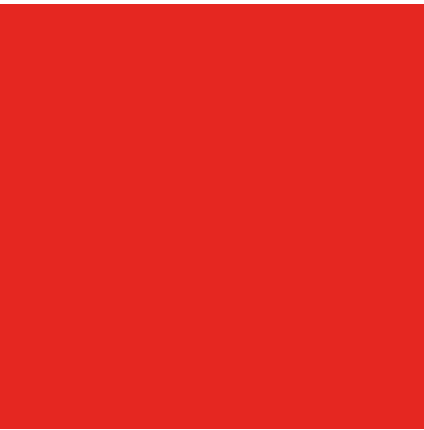


TABLE OF CONTENTS

TIMING BELTS

Megadyne MEGASYNC™	4
RUBBER OPEN-ENDED	5
MEGAPOWER	13
MEGAFLEX	15
MEGALINEAR	19
	22

FLAT BELTS

MEGAFLAT (PU)	27
	28

V-BELTS

Rubber wrapped V-belts	29
Rubber raw edge V-Belts	30
ACCU-LINK®	42
MEGAWELD	48
	49

MULTI-RIB BELTS

Megadyne ROLLPOWER™	50
Standard rubber ribbed	51
MEGARIB	52
	54

SPECIAL & FABRICATED BELTS

Covers	56
Cleats	57
False teeth	59
PPJ System	60
Special modifications	61
	62

METAL DRIVE COMPONENTS

Metal drive components	63
Accessories	64
	66

LITERATURE

CERTIFICATES

WE ARE **MEGADYNE**

Welcome to Megadyne, where innovative power transmission solutions drive operational excellence. Our products help customers achieve peak performance, empowering your business to maximize efficiency.

MATHI, ITALY



ABOUT US

Our skilled designers and engineers are crucial to delivering innovative Megadyne power transmission solutions. As field experts, they thoroughly analyze and study industrial processes to develop new solutions and enhance existing ones.

Remaining a local power transmission brand while expanding our global reach has enabled us to become a market leader. Our products are designed to meet your needs firsthand, providing effective solutions worldwide.

Sustainable solutions are more important than ever for Megadyne. Our brand is represented by people who care for the environment and are committed to preserving it for future generations. That's why our products are designed to last longer, save energy, and reduce our customers' overall carbon footprint.

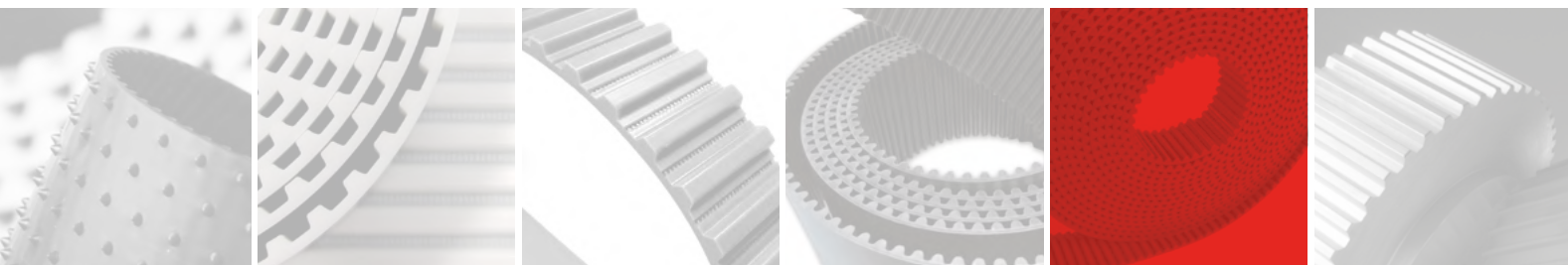


8 

FACTORIES IN EUROPE,
ASIA AND AMERICA

+170 

COMMERCIAL LOCATIONS



OUR REACH

After decades of growth, Megadyne continues to excel with a diverse portfolio of comprehensive power transmission and product handling solutions for all industry segments.

Our extensive product portfolio is available globally in over 40 countries and 170 locations to support our OEM and SEM clients' businesses in their sustainability efforts. Alongside AMMEGA brands like Ammeraal Beltech in conveyor belting and Jason Industrial in fluid power, we share core values of customer centricity, people focus, entrepreneurship, agility, and responsibility. Together, we provide unique applications, fluid power solutions, and belting solutions for the entire supply chain.

1957



OUR SOLUTIONS

Our customers include original equipment manufacturers and aftermarket distributors, for whom we deliver a wide range of products. Our offerings include thermoset and thermoplastic polyurethane belts, rubber timing and V-belts, flat belts, multi-rib belts, engineered/specialty belts, pulleys, clamping plates, timing bars and complementary products that can be customized for your application.

Engineered belts are the pride of Megadyne. Customers who purchase our fabricated solutions first experience the expertise of our professionals and are then amazed by the final product. Each fully customized power transmission belt, complete with all accessories, is precisely tailored to meet the exact requirements of the customer's application.



Welcome to Megadyne **Power Transmission Solutions**

Megadyne supplies complete and innovative solutions for broad applications and industries such as **material handling, elevators, machine tools, food industry equipment, packaging, fitness, wood, marble, and ceramics...** just to name a few of the many industrial markets where you'll find the Megadyne name.



MATERIAL
HANDLING



ELEVATORS
& LIFTS



MACHINE
TOOLS



PACKAGING



FITNESS



WOOD

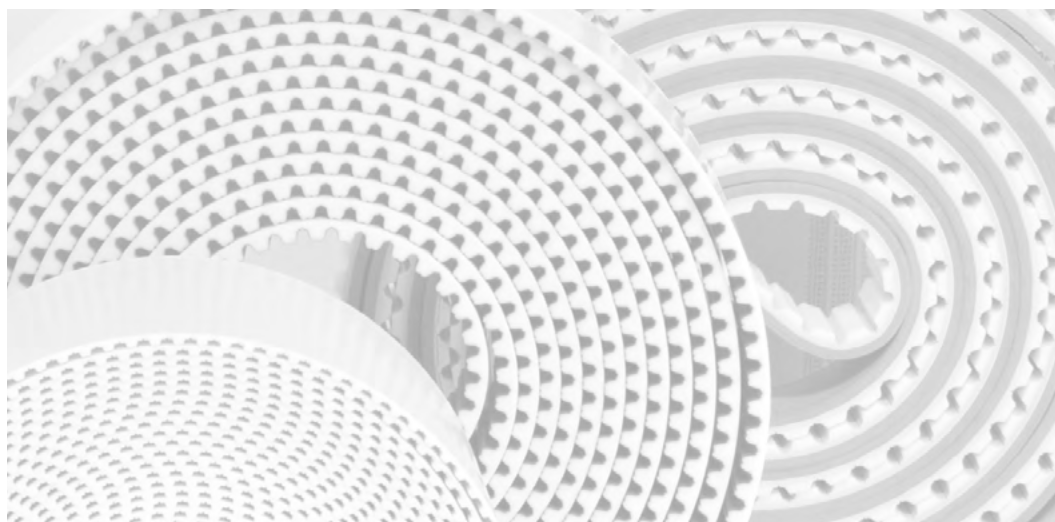


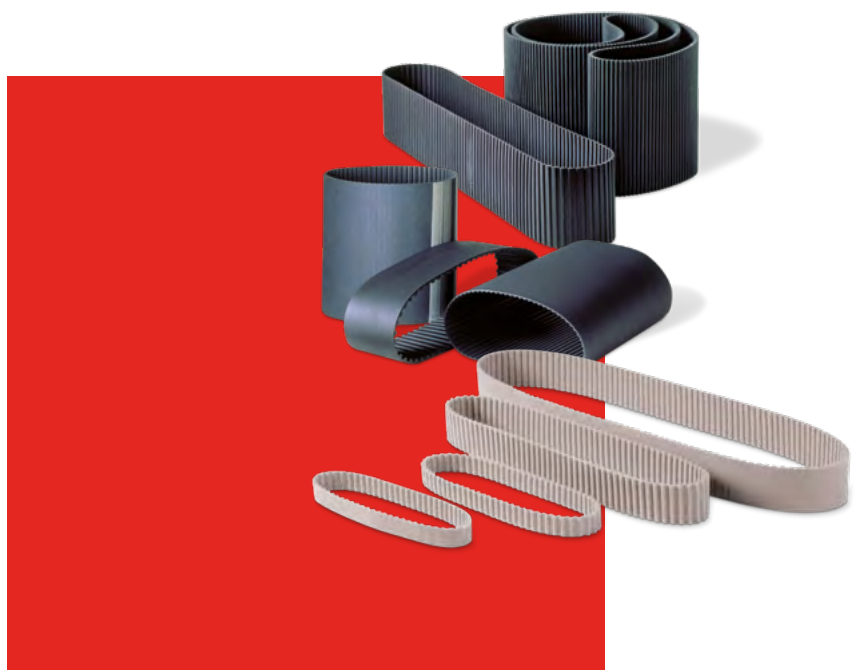
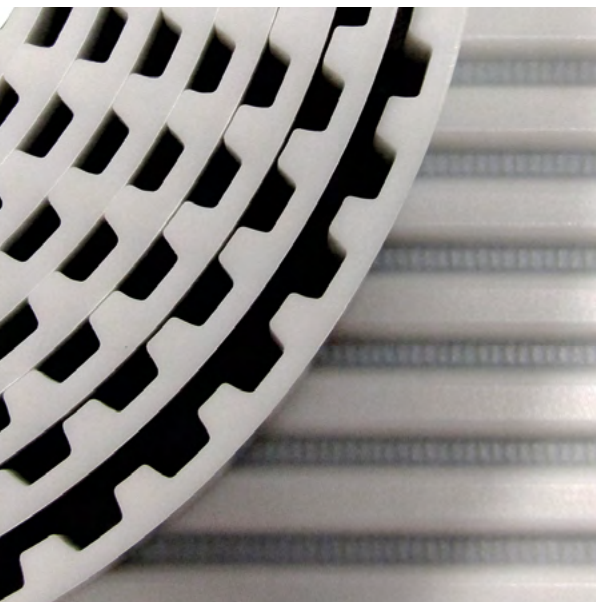
FOOD



MARBLE
& CERAMICS

WE MAKE
YOUR
BUSINESS
MOVE





TIMING BELTS

MEGADYNE MEGASYNC™
RUBBER OPEN-ENDED
MEGAPOWER
MEGAFLEX
MEGALINEAR

MEGADYNE MEGASYNC™

RUBBER ENDLESS TIMING BELTS

Megadyne rubber endless timing belts are available with single or double sided teeth, in imperial and RPP-RPC profiles. They are manufactured using the most advanced technology available.

MEGADYNE MEGASYNC™ IMPERIAL SYNCHRONOUS MXL XL L H XH XXH

- Trapezoidal tooth profile
- Polychloroprene teeth for accurate meshing
- Fiberglass reinforcement for minimal elongation
- Nylon fabric protecting tooth surface

MEGADYNE MEGASYNC™ STD, HTB

- Curvilinear tooth profile
- Same properties of RPP belts

MEGADYNE MEGASYNC™ RPP3 RPP5 RPP8 RPP14

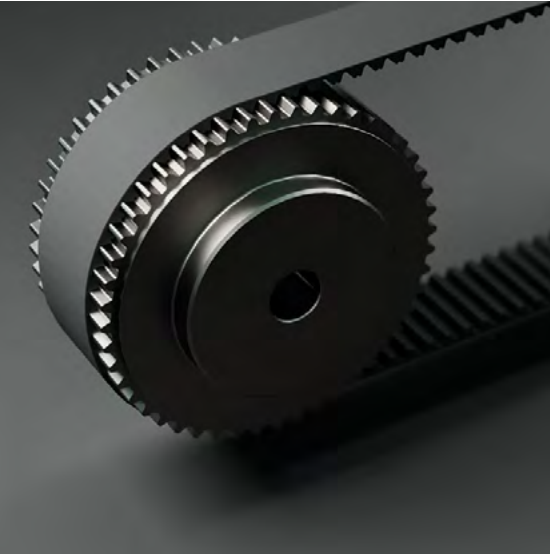
- RPP parabolic tooth profile gives graduated pressure increase over tooth height
- Chloroprene rubber for wear resistance and increased service life
- Fiberglass reinforcement for minimal elongation and high flexibility
- Nylon fabric protecting tooth surface, with self lubrication

MEGADYNE MEGASYNC™ SILVER3 AND GOLD2

- Constructed with the highest quality materials
- RPP/RPC profiles (check next pages for detailed information)
- Upgrade the existing transmission without changing the pulleys
- Perfect interchangeability with parabolic and deep pulley profile
- Antistatic properties conforming to the ISO 9563 (for Silver3 5M only on request)
- Drive energy efficiency up to 98%
- Excellent for backside idlers
- Higher tooth jump resistance and increased resistance to tooth shear
- Quiet, maintenance-free operation

MEGADYNE MEGASYNC™ TITANIUM

- High-performance, rubber-based timing belt featuring an **RPC tooth profile**
- **Fully compatible with existing RPP pulleys** and functionally interchangeable with other deep-tooth pulley systems such as **HTD**, ensuring easy integration
- Increased basic **power capacity by up to 30%** compared to the previous top of the range
- **Significant reduction of noise** compared to drive systems using polyurethane, steel etc. due to the rubber matrix and teeth with the parabolic profile shape, recognised as the quietest system on the market
- Antistatic qualities in accordance with ISO 9563 standard
- A wide, continuous range of possible operating temperature which makes Titanium the only solution for extreme working conditions.

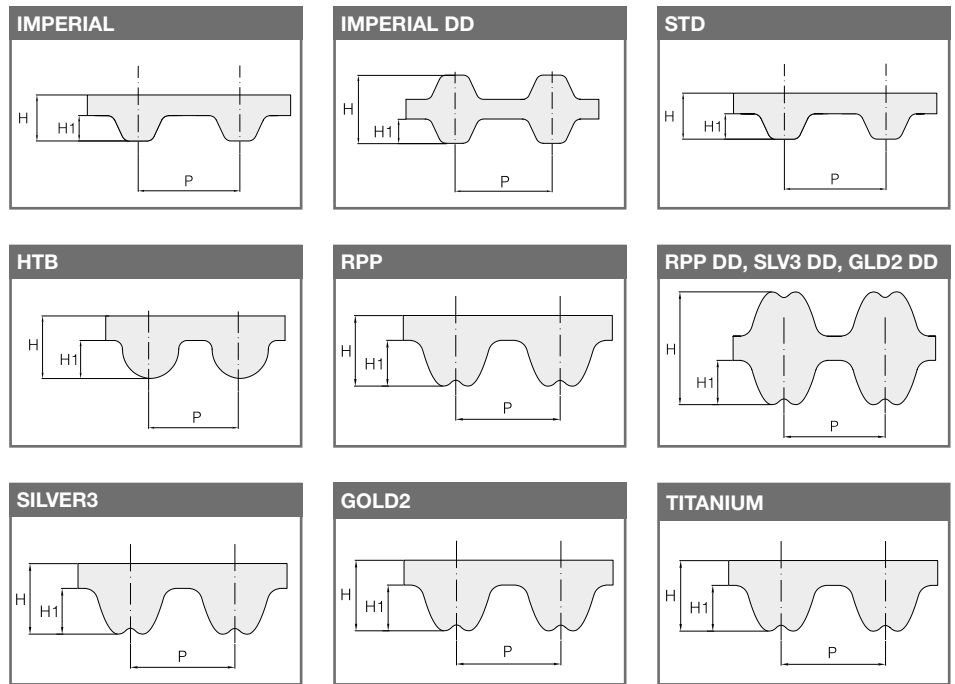


MEGADYNE MEGASYNC™

RUBBER ENDLESS TIMING BELTS

MEGADYNE MEGASYNC  **Titanium**

MEGASYNC™ STANDARD RANGE:



	MXL	XL	L	H	XH	XXH	XLDD	LDD	HDD	HTB 3M	HTB 5M
P	2,032	5,08	9,525	12,70	22,225	31,75	5,08	9,525	12,70	3,00	5,00
H₁	0,51	1,27	1,91	2,29	6,35	9,53	1,27	1,91	2,29	1,21	2,08
H	1,14	2,40	3,60	4,40	11,40	15,3	3,05	4,60	5,90	2,40	3,80

	HTB 8M	HTB 14M	STD8	RPP3	RPP5	RPP8	RPP14	RPP5 DD	RPP8 DD	RPP14 DD
P	8,00	14,00	8,00	3,00	5,00	8,00	14,00	5,00	8,00	14,00
H₁	3,38	6,02	3,05	1,15	2,00	3,20	6,00	2,00	3,20	5,7
H	6,00	10,00	5,30	2,40	3,80	5,40	9,70	5,20	7,80	14,80

	SILVER3 5M	SILVER3 8M	SILVER3 14M	SLV3 8M DD	SLV3 14M DD*	GOLD2 5M*	GOLD2 8M	GOLD2 14M
P	5,00	8,00	14,00	8,00	14,00	5,00	8,00	14,00
H₁	2,00	3,20	6,00	3,20	5,70	2,00	3,20	6,00
H	3,80	5,40	9,70	7,80	14,80	3,80	5,40	9,70

	GLD2 8M DD*	GLD2 14MM DD*	TITANIUM 8M	TITANIUM 14M
P	8,00	14,00	8,00	14,00
H₁	3,20	5,70	3,46	6,10
H	7,80	14,80	5,40	9,70

(* Made To Order)

TIMING BELTS

MEGADYNE MEGASYNC™ - RUBBER ENDLESS TIMING BELTS

MXL		MXL		XL		H		XXH		L DD	
CODE	PITCH LENGTH (mm)	CODE	PITCH LENGTH (mm)	CODE	PITCH LENGTH (mm)	CODE	PITCH LENGTH (mm)	CODE	PITCH LENGTH (mm)	CODE	PITCH LENGTH (mm)
360 MXL	91,44	3064 MXL	778,26	310 XL	787,40	240 H	609,60	700 XXH	1778,00	124 L DD	314,32
432 MXL	109,73	3104 MXL	788,42	316 XL	802,64	255 H	647,70	800 XXH	2032,00	135 L DD	342,90
440 MXL	111,76	3200 MXL	812,80	320 XL	812,80	270 H	685,80	900 XXH	2286,00	150 L DD	381,00
456 MXL	115,82	3296 MXL	837,18	330 XL	838,20	300 H	762,00	1000 XXH	2540,00	173 L DD	438,15
480 MXL	121,92	3424 MXL	869,70	340 XL	863,60	330 H	838,20	1200 XXH	3048,00	187 L DD	476,25
488 MXL	123,95	3472 MXL	881,89	344 XL	873,76	350 H	889,00	1400 XXH	3556,00	202 L DD	514,35
496 MXL	125,98	3480 MXL	883,92	350 XL	889,00	360 H	914,40	1600 XXH	4064,00	210 L DD	533,40
536 MXL	136,14	3520 MXL	894,08	352 XL	894,08	375 H	952,50	1800 XXH	4572,00	225 L DD	571,50
544 MXL	138,18	3632 MXL	922,53	360 XL	914,40	390 H	990,60			240 L DD	609,60
576 MXL	146,30	3704 MXL	940,82	364 XL	924,56	400 H	1016,00			255 L DD	647,70
584 MXL	148,34	3944 MXL	1001,78	380 XL	965,20	410 H	1041,40			270 L DD	685,80
608 MXL	154,43	4000 MXL	1016,00	384 XL	975,36	420 H	1066,80			285 L DD	723,90
632 MXL	160,53	4064 MXL	1032,26	388 XL	985,52	450 H	1143,00			300 L DD	762,00
640 MXL	162,56	4200 MXL	1066,80	390 XL	990,60	480 H	1219,20			322 L DD	819,15
656 MXL	166,62	4280 MXL	1087,12	392 XL	995,68	490 H	1244,60			334 L DD	848,36
664 MXL	168,66	4320 MXL	1097,28	412 XL	1046,48	510 H	1295,40			345 L DD	876,30
680 MXL	172,72	4456 MXL	1131,82	434 XL	1102,36	540 H	1371,60			367 L DD	933,45
704 MXL	178,82	4736 MXL	1202,94	460 XL	1168,40	560 H	1422,40			390 L DD	990,60
720 MXL	182,88	4800 MXL	1219,20	486 XL	1234,44	570 H	1447,80			405 L DD	1028,70
736 MXL	186,94	5224 MXL	1326,90	490 XL	1244,60	580 H	1473,20			412 L DD	1047,75
752 MXL	191,00			530 XL	1346,20	600 H	1524,00			420 L DD	1066,80
760 MXL	193,04			592 XL	1503,68	630 H	1600,20			450 L DD	1143,00
768 MXL	195,00			600 XL	1524,00	660 H	1676,40			480 L DD	1219,20
776 MXL	197,10			710 XL	1803,40	670 H	1701,80			510 L DD	1295,40
800 MXL	203,20			950 XL	2413,00	700 H	1778,00			540 L DD	1371,60
808 MXL	205,23			1014 XL	2575,56	725 H	1841,50			600 L DD	1524,00
824 MXL	209,30			1180 XL	2997,20	750 H	1905,00			728 L DD	1847,85
840 MXL	213,36			1280 XL	3251,20	800 H	2032,00			817 L DD	2076,45
880 MXL	223,52					850 H	2159,00			1103 L DD	2800,35
888 MXL	225,55					900 H	2286,00				
912 MXL	231,65					950 H	2413,00				
920 MXL	233,68					985 H	2501,90				
944 MXL	239,78					1000 H	2540,00				
952 MXL	241,81					1020 H	2590,80				
960 MXL	243,84					1050 H	2667,00				
976 MXL	247,90					1100 H	2794,00				
984 MXL	249,94					1120 H	2844,80				
1000 MXL	254,00					1140 H	2895,60				
1008 MXL	256,03					1150 H	2921,00				
1016 MXL	258,06					1250 H	3175,00				
1040 MXL	264,16					1400 H	3556,00				
1056 MXL	268,22					1645 H	4178,30				
1072 MXL	272,29					1700 H	4318,00				
1120 MXL	284,48										
1160 MXL	294,64										
1176 MXL	298,70										
1184 MXL	300,74										
1200 MXL	304,80										
1224 MXL	310,90										
1240 MXL	314,96										
1280 MXL	325,12										
1296 MXL	329,10										
1400 MXL	355,60										
1440 MXL	365,70										
1472 MXL	373,89										
1496 MXL	379,98										
1520 MXL	386,08										
1600 MXL	406,40										
1680 MXL	426,72										
1696 MXL	430,78										
1768 MXL	449,07										
1800 MXL	457,20										
1832 MXL	465,33										
1856 MXL	471,42										
1888 MXL	479,55										
1984 MXL	503,94										
1992 MXL	505,97										
2048 MXL	520,19										
2240 MXL	568,96										
2248 MXL	570,90										
2360 MXL	599,44										
2384 MXL	605,54										
2480 MXL	629,92										
2496 MXL	633,98										
2520 MXL	640,08										
2584 MXL	656,34										
2624 MXL	666,40										
2776 MXL	705,10										
2864 MXL	727,46										
2880 MXL	731,52										
2976 MXL	755,90										
3024 MXL	778,25										

XL		L		XL DD		H DD	
CODE	PITCH LENGTH (mm)	CODE	PITCH LENGTH (mm)	CODE	PITCH LENGTH (mm)	CODE	PITCH LENGTH (mm)
54 XL	137,16	124 L	314,32	120 XL DD	304,80	240 H DD	609,60
60 XL	152,40	135 L	342,90	130 XL DD	330,20	255 H DD	647,70
70 XL	177,80	150 L	381,00	140 XL DD	355,60	270 H DD	685,80
72 XL	182,88	165 L	419,10	146 XL DD	370,84	300 H DD	762,00
80 XL	203,20	173 L	438,15	150 XL DD	381,00	330 H DD	838,20
90 XL	228,60	187 L	476,25	156 XL DD	396,24	360 H DD	914,40
98 XL	248,92	202 L	514,35	160 XL DD	406,40	390 H DD	990,60
100 XL	254,00	210 L	533,40	170 XL DD	431,80	400 H DD	1016,00
102 XL	259,08	225 L	571,50	176 XL DD	447,04	410 H DD	1041,40
104 XL	264,16	240 L	609,60	180 XL DD	457,20	420 H DD	1066,80
106 XL	269,24	255 L	647,70	182 XL DD	462,28	450 H DD	1143,00
110 XL	279,40	270 L	685,80	188 XL DD	477,52	480 H DD	1219,20
120 XL	304,80	285 L	723,90	190 XL DD	482,60	510 H DD	1295,40
128 XL	352,12	300 L	762,00	198 XL DD	502,92	540 H DD	1371,60
130 XL	330,20	320 L	809,60	200 XL DD	508,00	570 H DD	1447,80
140 XL	355,60	334 L	848,36	202 XL DD	513,08	600 H DD	1524,00
142 XL	360,68	345 L	876,30	210 XL DD	533,40	630 H DD	1600,20
146 XL	370,84	367 L	933,45	212 XL DD	538,48	660 H DD	1676,40
150 XL	381,00	390 L	990,60	214 XL DD	543,56	670 H DD	1701,80
152 XL	386,08	405 L	1028,70	220 XL DD	558,80	700 H DD	1778,00
156 XL	396,24	412 L	1047,75	228 XL DD	579,12	725 H DD	1841,50
160 XL	406,40	420 L	1066,80	230 XL DD	584,20	750 H DD	1905,00
162 XL	411,48	424 L	1076,30	234 XL DD	594,36	800 H DD	2032,00
164 XL	416,56	427 L	1085,80	240 XL DD	609,60	850 H DD	2159,00
170 XL	431,80	450 L	1143,00	250 XL DD	635,00	900 H DD	2286,00
176 XL	447,04	480 L	1219,20	260 XL DD	660,40	1000 H DD	2540,00
180 XL	457,20	510 L	1295,40	270 XL DD	685,80	1020 H DD	2590,80
182 XL	462,28	540 L	1371,60	276 XL DD	701,04	1100 H DD	2794,00
188 XL	477,52	581 L	1476,30	280 XL DD	711,20	1120 H DD	2844,80
190 XL	482,60	600 L	1524,00	290 XL DD	736,60	1140 H DD	2895,60
194 XL	492,76	630 L	1600,20	310 XL DD	787,40	1150 H DD	2921,00
198 XL	502,92	660 L	1676,40	316 XL DD	802,64	1250 H DD	3175,00
200 XL	508,00	728 L	1847,85	320 XL DD	812,80	1400 H DD	3556,00
202 XL	513,08	817 L	2076,45	330 XL DD	838,20	1645 H DD	4178,30
210 XL	533,40	1103 L	2800,35	344 XL DD	873,76	1700 H DD	4318,00
212 XL	538,48			352 XL DD	894,08		
214 XL	543,56			364 XL DD	924,56		
218 XL	558,80			380 XL DD	965,20		
220 XL	563,84			384 XL DD	975,36		
222 XL	568,88			388 XL DD	985,52		
224 XL	573,92			390 XL DD	990,60		
226 XL	578,96			392 XL DD	995,68		
228 XL	584,00			434 XL DD	1102,36		
230 XL	589,04			460 XL DD	1168,40		
232 XL	594,08			486 XL DD	1234,40		
234 XL	599,12			530 XL DD	1346,20		
236 XL	604,16			600 XL DD	1524,00		
238 XL	609,20			710 XL DD	1803,40		
240 XL	614,24			950 XL DD	2413,00		
242 XL	619,28			1014 XL DD	2575,56		
244 XL	624,32						
246 XL	629,36						
248 XL	634,40						
250 XL	639,44						
252 XL	644,48						
254 XL	649,52						
256 XL	654,56						
258 XL	659,60						
260 XL	664,64						
262 XL	669,68						
264 XL	674,72						
266 XL	679,76						
268 XL	684,80						
270 XL	689,84						
272 XL	694,88						
274 XL	700,00						

MEGADYNE MEGASYNC™ - RUBBER ENDLESS TIMING BELTS

STD 8		HTB 3M		HTB 5M		HTB 8M		HTB 14M	
CODE	PITCH LENGTH (mm)	CODE	PITCH LENGTH (mm)	CODE	PITCH LENGTH (mm)	CODE	PITCH LENGTH (mm)	CODE	PITCH LENGTH (mm)
656 STD8	656	171 HTB 3M	171	215 HTB 5M	215	288 HTB 8M	288	966 HTB 14M	966
800 STD8	800	174 HTB 3M	174	240 HTB 5M	240	480 HTB 8M	480	1064 HTB 14M	1064
720 STD8	720	177 HTB 3M	177	270 HTB 5M	270	536 HTB 8M	536	1190 HTB 14M	1190
760 STD8	760	216 HTB 3M	216	320 HTB 5M	320	560 HTB 8M	560	1344 HTB 14M	1344
840 STD8	840	225 HTB 3M	225	340 HTB 5M	340	600 HTB 8M	600	1400 HTB 14M	1400
848 STD8	848	246 HTB 3M	246	350 HTB 5M	350	616 HTB 8M	616	1456 HTB 14M	1456
880 STD8	880	255 HTB 3M	255	355 HTB 5M	355	632 HTB 8M	632	1512 HTB 14M	1512
896 STD8	896	264 HTB 3M	264	375 HTB 5M	375	640 HTB 8M	640	1540 HTB 14M	1540
920 STD8	920	276 HTB 3M	276	385 HTB 5M	385	656 HTB 8M	656	1610 HTB 14M	1610
936 STD8	936	285 HTB 3M	285	400 HTB 5M	400	720 HTB 8M	720	1764 HTB 14M	1764
960 STD8	960	300 HTB 3M	300	420 HTB 5M	420	760 HTB 8M	760	1778 HTB 14M	1778
976STD8	976	306 HTB 3M	306	450 HTB 5M	450	800 HTB 8M	800	1890 HTB 14M	1890
1000 STD8	1000	312 HTB 3M	312	475 HTB 5M	475	840 HTB 8M	840	2100 HTB 14M	2100
1040 STD8	1040	318 HTB 3M	318	500 HTB 5M	500	856 HTB 8M	856	2310 HTB 14M	2310
1056 STD8	1056	336 HTB 3M	336	520 HTB 5M	520	880 HTB 8M	880	2450 HTB 14M	2450
1064 STD8	1064	375 HTB 3M	375	525 HTB 5M	525	912 HTB 8M	912	2590 HTB 14M	2590
1080 STD8	1080	447 HTB 3M	447	535 HTB 5M	535	920 HTB 8M	920	2800 HTB 14M	2800
1096 STD8	1096	483 HTB 3M	483	540 HTB 5M	540	960 HTB 8M	960	3150 HTB 14M	3150
1104 STD8	1104	501 HTB 3M	501	550 HTB 5M	550	1000 HTB 8M	1000	3360 HTB 14M	3360
1120 STD8	1120	537 HTB 3M	537	560 HTB 5M	560	1040 HTB 8M	1040	3500 HTB 14M	3500
1152 STD8	1152	558 HTB 3M	558	575 HTB 5M	575	1080 HTB 8M	1080	3850 HTB 14M	3850
1160 STD8	1160	564 HTB 3M	564	615 HTB 5M	615	1120 HTB 8M	1120	4326 HTB 14M	4326
1168 STD8	1168	585 HTB 3M	585	630 HTB 5M	630	1152 HTB 8M	1152	4578 HTB 14M	4578
1184 STD8	1184	633 HTB 3M	633	635 HTB 5M	635	1200 HTB 8M	1200		
1200 STD8	1200	1002 HTB 3M	1002	645 HTB 5M	645	1224 HTB 8M	1224		
1216 STD8	1216			655 HTB 5M	655	1256 HTB 8M	1256		
1224 STD8	1224			670 HTB 5M	670	1280 HTB 8M	1280		
1248 STD8	1248			710 HTB 5M	710	1304 HTB 8M	1304		
1256 STD8	1256			740 HTB 5M	740	1360 HTB 8M	1360		
1280 STD8	1280			750 HTB 5M	750	1400 HTB 8M	1400		
1304 STD8	1304			770 HTB 5M	770	1440 HTB 8M	1440		
1320 STD8	1320			800 HTB 5M	800	1552 HTB 8M	1552		
1328 STD8	1328			825 HTB 5M	825	1600 HTB 8M	1600		
1344 STD8	1344			835 HTB 5M	835	1760 HTB 8M	1760		
1352 STD8	1352			850 HTB 5M	850	1800 HTB 8M	1800		
1360 STD8	1360			890 HTB 5M	890	2000 HTB 8M	2000		
1384 STD8	1384			900 HTB 5M	900	2032 HTB 8M	2032		
1400 STD8	1400			925 HTB 5M	925	2104 HTB 8M	2104		
1408 STD8	1408			950 HTB 5M	950	2240 HTB 8M	2240		
1424 STD8	1424			965 HTB 5M	965	2400 HTB 8M	2400		
1440 STD8	1440			980 HTB 5M	980	2600 HTB 8M	2600		
1552 STD8	1552			1000 HTB 5M	1000	2800 HTB 8M	2800		
1728 STD8	1728			1050 HTB 5M	1050	4400 HTB 8M	4400		
1800 STD8	1800			1145 HTB 5M	1145				
1912 STD8	1912			1160 HTB 5M	1160				
2304 STD8	2304			1225 HTB 5M	1225				
2000 STD8	2000			1250 HTB 5M	1250				
				1270 HTB 5M	1270				
				1350 HTB 5M	1350				
				1400 HTB 5M	1400				
				1420 HTB 5M	1420				
				1500 HTB 5M	1500				
				1595 HTB 5M	1595				
				2000 HTB 5M	2000				
				2100 HTB 5M	2100				

MEGADYNE MEGASYNC™ - RUBBER ENDLESS TIMING BELTS

SILVER3 5M*	
CODE	PITCH LENGTH (mm)
180 SLV3 5M	180
225 SLV3 5M	225
235 SLV3 5M	235
245 SLV3 5M	245
255 SLV3 5M	255
265 SLV3 5M	265
270 SLV3 5M	270
280 SLV3 5M	280
285 SLV3 5M	285
295 SLV3 5M	295
300 SLV3 5M	300
305 SLV3 5M	305
325 SLV3 5M	325
330 SLV3 5M	330
345 SLV3 5M	345
350 SLV3 5M	350
375 SLV3 5M	375
400 SLV3 5M	400
420 SLV3 5M	420
425 SLV3 5M	425
450 SLV3 5M	450
455 SLV3 5M	455
460 SLV3 5M	460
465 SLV3 5M	465
475 SLV3 5M	475
500 SLV3 5M	500
525 SLV3 5M	525
535 SLV3 5M	535
565 SLV3 5M	565
575 SLV3 5M	575
580 SLV3 5M	580
600 SLV3 5M	600
610 SLV3 5M	610
615 SLV3 5M	615
635 SLV3 5M	635
640 SLV3 5M	640
650 SLV3 5M	650
670 SLV3 5M	670
675 SLV3 5M	675
700 SLV3 5M	700
705 SLV3 5M	705
710 SLV3 5M	710
725 SLV3 5M	725
740 SLV3 5M	740
750 SLV3 5M	750
755 SLV3 5M	755
800 SLV3 5M	800
835 SLV3 5M	835
850 SLV3 5M	850
890 SLV3 5M	890
900 SLV3 5M	900
935 SLV3 5M	935
940 SLV3 5M	940
950 SLV3 5M	950
980 SLV3 5M	980
1000 SLV3 5M	1000
1025 SLV3 5M	1025
1050 SLV3 5M	1050
1100 SLV3 5M	1100
1125 SLV3 5M	1125
1135 SLV3 5M	1135
1195 SLV3 5M	1195

SILVER3 5M*	
CODE	PITCH LENGTH (mm)
1200 SLV3 5M	1200
1240 SLV3 5M	1240
1270 SLV3 5M	1270
1420 SLV3 5M	1420
1500 SLV3 5M	1500
1595 SLV3 5M	1595
1605 SLV3 5M	1605
1690 SLV3 5M	1690
1790 SLV3 5M	1790
1800 SLV3 5M	1800
1870 SLV3 5M	1870
1895 SLV3 5M	1895
1945 SLV3 5M	1945
2000 SLV3 5M	2000
2250 SLV3 5M	2250
2350 SLV3 5M	2350
2525 SLV3 5M	2525

SILVER3 8M	
CODE	PITCH LENGTH (mm)
248 SLV3 8M	248
288 SLV3 8M	288
320 SLV3 8M*	320
352 SLV3 8M	352
360 SLV3 8M*	360
376 SLV3 8M*	376
384 SLV3 8M	384
408 SLV3 8M*	408
416 SLV3 8M	416
424 SLV3 8M*	424
456 SLV3 8M	456
480 SLV3 8M	480
536 SLV3 8M*	536
544 SLV3 8M	544
560 SLV3 8M	560
600 SLV3 8M	600
608 SLV3 8M	608
632 SLV3 8M*	632
640 SLV3 8M	640
680 SLV3 8M	680
720 SLV3 8M	720
760 SLV3 8M*	760
800 SLV3 8M	800
840 SLV3 8M	840
880 SLV3 8M	880
896 SLV3 8M	896
920 SLV3 8M	920
960 SLV3 8M	960
976 SLV3 8M	976
1000 SLV3 8M	1000
1040 SLV3 8M	1040
1064 SLV3 8M	1064
1080 SLV3 8M	1080
1120 SLV3 8M	1120
1160 SLV3 8M	1160
1200 SLV3 8M	1200
1224 SLV3 8M	1224
1280 SLV3 8M	1280
1352 SLV3 8M*	1352

SILVER3 8M	
CODE	PITCH LENGTH (mm)
1424 SLV3 8M*	1424
1440 SLV3 8M	1440
1464 SLV3 8M	1464
1512 SLV3 8M	1512
1584 SLV3 8M	1584
1600 SLV3 8M	1600
1680 SLV3 8M	1680
1760 SLV3 8M	1760
1800 SLV3 8M	1800
1904 SLV3 8M*	1904
2000 SLV3 8M	2000
2200 SLV3 8M	2200
2240 SLV3 8M	2240
2272 SLV3 8M*	2272
2400 SLV3 8M	2400
2520 SLV3 8M	2520
2600 SLV3 8M	2600
2800 SLV3 8M	2800
2840 SLV3 8M	2840
3048 SLV3 8M	3048
3200 SLV3 8M	3200
3280 SLV3 8M	3280
3600 SLV3 8M	3600
4000 SLV3 8M	4000
4400 SLV3 8M	4400

SILVER3 14M	
CODE	PITCH LENGTH (mm)
966 SLV3 14M*	966
994 SLV3 14M	994
1092 SLV3 14M	1092
1106 SLV3 14M*	1106
1120 SLV3 14M	1120
1190 SLV3 14M	1190
1260 SLV3 14M	1260
1288 SLV3 14M	1288
1344 SLV3 14M*	1344
1400 SLV3 14M	1400
1442 SLV3 14M*	1442
1512 SLV3 14M	1512
1568 SLV3 14M	1568
1610 SLV3 14M	1610
1750 SLV3 14M	1750
1764 SLV3 14M	1764
1778 SLV3 14M	1778
1848 SLV3 14M	1848
1890 SLV3 14M	1890
1904 SLV3 14M	1904
1960 SLV3 14M	1960
2100 SLV3 14M	2100
2240 SLV3 14M	2240
2310 SLV3 14M	2310
2380 SLV3 14M	2380
2450 SLV3 14M	2450
2520 SLV3 14M	2520
2590 SLV3 14M	2590
2660 SLV3 14M	2660
2800 SLV3 14M	2800
2968 SLV3 14M*	2968

SILVER3 14M	
CODE	PITCH LENGTH (mm)
3136 SLV3 14M	3136
3150 SLV3 14M	3150
3304 SLV3 14M	3304
3360 SLV3 14M	3360
3500 SLV3 14M	3500
3850 SLV3 14M	3850
3920 SLV3 14M	3920
4326 SLV3 14M	4326
4410 SLV3 14M	4410
4578 SLV3 14M*	4578
4956 SLV3 14M	4956

SILVER3 8 DD*	
CODE	PITCH LENGTH (mm)
600 SLV3 8DD	600
608 SLV3 8DD	608
632 SLV3 8DD	632
640 SLV3 8DD	640
680 SLV3 8DD	680
720 SLV3 8DD	720
760 SLV3 8DD	760
800 SLV3 8DD	800
840 SLV3 8DD	840
880 SLV3 8DD	880
896 SLV3 8DD	896
920 SLV3 8DD	920
960 SLV3 8DD	960
1000 SLV3 8DD	1000
1040 SLV3 8DD	1040
1080 SLV3 8DD	1080
1120 SLV3 8DD	1120
1200 SLV3 8DD	1200
1224 SLV3 8DD	1224
1280 SLV3 8DD	1280
1352 SLV3 8DD	1352
1424 SLV3 8DD	1424
1440 SLV3 8DD	1440
1464 SLV3 8DD	1464
1600 SLV3 8DD	1600
1680 SLV3 8DD	1680
1760 SLV3 8DD	1760
1792 SLV3 8DD	1792
1800 SLV3 8DD	1800
2000 SLV3 8DD	2000
2200 SLV3 8DD	2200
2240 SLV3 8DD	2240
2272 SLV3 8DD	2272
2400 SLV3 8DD	2400
2520 SLV3 8DD	2520
2600 SLV3 8DD	2600
2800 SLV3 8DD	2800
2840 SLV3 8DD	2840
3048 SLV3 8DD	3048
3200 SLV3 8DD	3200
3280 SLV3 8DD	3280
3600 SLV3 8DD	3600
4000 SLV3 8DD	4000
4400 SLV3 8DD	4400

SILVER3 14M DD* (Made To Order)	
CODE	PITCH LENGTH (mm)
966 SLV3 14DD	966
994 SLV3 14DD	994
1092 SLV3 14DD	1092
1106 SLV3 14DD	1106
1120 SLV3 14DD	1120
1190 SLV3 14DD	1190
1260 SLV3 14DD	1260
1288 SLV3 14DD	1288
1344 SLV3 14DD	1344
1400 SLV3 14DD	1400
1442 SLV3 14DD	1442
1568 SLV3 14DD	1568
1610 SLV3 14DD	1610
1750 SLV3 14DD	1750
1764 SLV3 14DD	1764
1778 SLV3 14DD	1778
1848 SLV3 14DD	1848
1890 SLV3 14DD	1890
1904 SLV3 14DD	1904
1960 SLV3 14DD	1960
2100 SLV3 14DD	2100
2240 SLV3 14DD	2240
2310 SLV3 14DD	2310
2380 SLV3 14DD	2380
2450 SLV3 14DD	2450
2520 SLV3 14DD	2520
2590 SLV3 14DD	2590
2660 SLV3 14DD	2660
2800 SLV3 14DD	2800
2968 SLV3 14DD	2968
3136 SLV3 14DD	3136
3150 SLV3 14DD	3150
3304 SLV3 14DD	3304
3360 SLV3 14DD	3360
3500 SLV3 14DD	3500
3850 SLV3 14DD	3850
3920 SLV3 14DD	3920
4326 SLV3 14DD	4326
4410 SLV3 14DD	4410
4578 SLV3 14DD	4578
4956 SLV3 14DD	4956

(*) RPP Profile

MEGADYNE MEGASYNC™ - RUBBER ENDLESS TIMING BELTS

GOLD2 5M* (Made To Order)	
CODE	PITCH LENGTH (mm)
180 GLD2 5M	180
225 GLD2 5M	225
235 GLD2 5M	235
245 GLD2 5M	245
255 GLD2 5M	255
265 GLD2 5M	265
270 GLD2 5M	270
280 GLD2 5M	280
285 GLD2 5M	285
295 GLD2 5M	295
300 GLD2 5M	300
305 GLD2 5M	305
325 GLD2 5M	325
330 GLD2 5M	330
345 GLD2 5M	345
350 GLD2 5M	350
375 GLD2 5M	375
400 GLD2 5M	400
420 GLD2 5M	420
425 GLD2 5M	425
450 GLD2 5M	450
455 GLD2 5M	455
460 GLD2 5M	460
465 GLD2 5M	465
475 GLD2 5M	475
500 GLD2 5M	500
525 GLD2 5M	525
535 GLD2 5M	535
565 GLD2 5M	565
575 GLD2 5M	575
580 GLD2 5M	580
600 GLD2 5M	600
610 GLD2 5M	610
615 GLD2 5M	615
635 GLD2 5M	635
640 GLD2 5M	640
650 GLD2 5M	650
670 GLD2 5M	670
675 GLD2 5M	675
700 GLD2 5M	700
705 GLD2 5M	705
710 GLD2 5M	710
725 GLD2 5M	725
740 GLD2 5M	740
750 GLD2 5M	750
755 GLD2 5M	755
800 GLD2 5M	800
835 GLD2 5M	835
850 GLD2 5M	850
890 GLD2 5M	890
900 GLD2 5M	900
935 GLD2 5M	935
940 GLD2 5M	940
950 GLD2 5M	950
980 GLD2 5M	980
1000 GLD2 5M	1000
1025 GLD2 5M	1025
1050 GLD2 5M	1050
1100 GLD2 5M	1100
1125 GLD2 5M	1125
1135 GLD2 5M	1135

GOLD2 5M* (Made To Order)	
CODE	PITCH LENGTH (mm)
1195 GLD2 5M	1195
1200 GLD2 5M	1200
1240 GLD2 5M	1240
1270 GLD2 5M	1270
1420 GLD2 5M	1420
1500 GLD2 5M	1500
1595 GLD2 5M	1595
1605 GLD2 5M	1605
1690 GLD2 5M	1690
1790 GLD2 5M	1790
1800 GLD2 5M	1800
1870 GLD2 5M	1870
1895 GLD2 5M	1895
1945 GLD2 5M	1945
2000 GLD2 5M	2000
2250 GLD2 5M	2250
2350 GLD2 5M	2350
2525 GLD2 5M	2525

GOLD2 8M	
CODE	PITCH LENGTH (mm)
248 GLD2 8M	248
288 GLD2 8M	288
320 GLD2 8M*	320
352 GLD2 8M	352
360 GLD2 8M*	360
376 GLD2 8M*	376
384 GLD2 8M*	384
408 GLD2 8M*	408
416 GLD2 8M	416
424 GLD2 8M*	424
456 GLD2 8M	456
480 GLD2 8M	480
536 GLD2 8M*	536
544 GLD2 8M	544
560 GLD2 8M	560
600 GLD2 8M	600
608 GLD2 8M	608
632 GLD2 8M*	632
640 GLD2 8M	640
680 GLD2 8M	680
720 GLD2 8M	720
760 GLD2 8M*	760
800 GLD2 8M	800
840 GLD2 8M	840
880 GLD2 8M	880
896 GLD2 8M	896
920 GLD2 8M	920
960 GLD2 8M	960
976 GLD2 8M	976
1000 GLD2 8M	1000
1040 GLD2 8M	1040
1064 GLD2 8M	1064
1080 GLD2 8M	1080
1120 GLD2 8M	1120
1160 GLD2 8M	1160
1200 GLD2 8M	1200

GOLD2 8M	
CODE	PITCH LENGTH (mm)
1224 GLD2 8M	1224
1280 GLD2 8M	1280
1352 GLD2 8M*	1352
1424 GLD2 8M*	1424
1440 GLD2 8M	1440
1464 GLD2 8M	1464
1512 GLD2 8M	1512
1584 GLD2 8M	1584
1600 GLD2 8M	1600
1680 GLD2 8M	1680
1760 GLD2 8M	1760
1800 GLD2 8M	1800
1904 GLD2 8M*	1904
2000 GLD2 8M	2000
2200 GLD2 8M	2200
2240 GLD2 8M	2240
2272 GLD2 8M*	2272
2400 GLD2 8M	2400
2520 GLD2 8M	2520
2600 GLD2 8M	2600
2800 GLD2 8M	2800
2840 GLD2 8M	2840
3048 GLD2 8M	3048
3200 GLD2 8M	3200
3280 GLD2 8M	3280
3600 GLD2 8M	3600
4000 GLD2 8M	4000
4400 GLD2 8M	4400

GOLD2 14M	
CODE	PITCH LENGTH (mm)
966 GLD2 14M*	966
994 GLD2 14M	994
1092 GLD2 14M	1092
1106 GLD2 14M*	1106
1120 GLD2 14M	1120
1190 GLD2 14M	1190
1260 GLD2 14M	1260
1288 GLD2 14M	1288
1344 GLD2 14M*	1344
1400 GLD2 14M	1400
1442 GLD2 14M*	1442
1512 GLD2 14M	1512
1568 GLD2 14M	1568
1610 GLD2 14M	1610
1750 GLD2 14M	1750
1764 GLD2 14M	1764
1778 GLD2 14M	1778
1848 GLD2 14M	1848
1890 GLD2 14M	1890
1904 GLD2 14M	1904
1960 GLD2 14M	1960
2100 GLD2 14M	2100
2240 GLD2 14M	2240
2310 GLD2 14M	2310
2380 GLD2 14M	2380
2450 GLD2 14M	2450
2520 GLD2 14M	2520

GOLD2 14M	
CODE	PITCH LENGTH (mm)
2590 GLD2 14M	2590
2660 GLD2 14M	2660
2800 GLD2 14M	2800
2968 GLD2 14M*	2968
3136 GLD2 14M	3136
3150 GLD2 14M	3150
3304 GLD2 14M	3304
3360 GLD2 14M	3360
3500 GLD2 14M	3500
3850 GLD2 14M	3850
3920 GLD2 14M	3920
4326 GLD2 14M	4326
4410 GLD2 14M	4410
4578 GLD2 14M*	4578
4956 GLD2 14M	4956

GOLD2 8M DD (Made To Order)	
CODE	PITCH LENGTH (mm)
800 GLD2 8DD	800
880 GLD2 8DD	880
960 GLD2 8DD	960
1040 GLD2 8DD	1040
1080 GLD2 8DD	1080
1200 GLD2 8DD	1200
1280 GLD2 8DD	1280
1352 GLD2 8DD	1352
1440 GLD2 8DD	1440
1600 GLD2 8DD	1600
1760 GLD2 8DD	1760
1800 GLD2 8DD	1800
2000 GLD2 8DD	2000
2200 GLD2 8DD	2200
2400 GLD2 8DD	2400
2520 GLD2 8DD	2520
2600 GLD2 8DD	2600
3600 GLD2 8DD	3600
4400 GLD2 8DD	4400

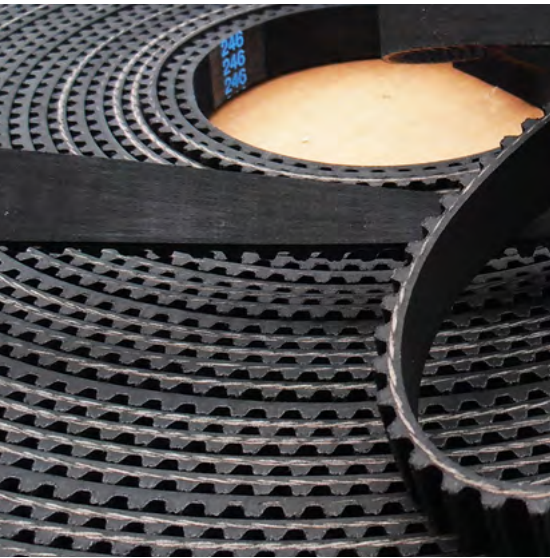
GOLD2 14M DD (Made To Order)	
CODE	PITCH LENGTH (mm)
1610 GLD2 14DD	1610
2310 GLD2 14DD	2310
2590 GLD2 14DD	2590
2800 GLD2 14DD	2800
3150 GLD2 14DD	3150
3500 GLD2 14DD	3500
3850 GLD2 14DD	3850
3920 GLD2 14DD	3920
4326 GLD2 14DD	4326

(*) RPP Profile

TIMING BELTS

MEGADYNE MEGASYNC™ - RUBBER ENDLESS TIMING BELTS

TTM 8M		TTM 14M	
CODE	PITCH LENGTH (mm)	CODE	PITCH LENGTH (mm)
248 TTM8	248	994 TTM14	994
288 TTM8	288	1092 TTM14	1092
352 TTM8	352	1120 TTM14	1120
416 TTM8	416	1190 TTM14	1190
456 TTM8	456	1260 TTM14	1260
480 TTM8	480	1288 TTM14	1288
544 TTM8	544	1400 TTM14	1400
560 TTM8	560	1512 TTM14	1512
600 TTM8	600	1568 TTM14	1568
608 TTM8	608	1610 TTM14	1610
640 TTM8	640	1750 TTM14	1750
720 TTM8	720	1778 TTM14	1778
800 TTM8	800	1890 TTM14	1890
840 TTM8	840	1960 TTM14	1960
880 TTM8	880	2100 TTM14	2100
896 TTM8	896	2240 TTM14	2240
920 TTM8	920	2310 TTM14	2310
960 TTM8	960	2380 TTM14	2380
976 TTM8	976	2450 TTM14	2450
1000 TTM8	1000	2520 TTM14	2520
1040 TTM8	1040	2590 TTM14	2590
1080 TTM8	1080	2660 TTM14	2660
1064 TTM8	1064	2800 TTM14	2800
1120 TTM8	1120	3136 TTM14	3136
1160 TTM8	1160	3150 TTM14	3150
1200 TTM8	1200	3304 TTM14	3304
1224 TTM8	1224	3360 TTM14	3360
1280 TTM8	1280	3500 TTM14	3500
1440 TTM8	1440	3850 TTM14	3850
1464 TTM8	1464	3920 TTM14	3920
1512 TTM8	1512	4326 TTM14	4326
1584 TTM8	1584	4410 TTM14	4410
1600 TTM8	1600	4956 TTM14	4956
1760 TTM8	1760		
1792 TTM8	1792		
1800 TTM8	1800		
2000 TTM8	2000		
2200 TTM8	2200		
2240 TTM8	2240		
2400 TTM8	2400		
2520 TTM8	2520		
2600 TTM8	2600		
2800 TTM8	2800		
2840 TTM8	2840		
3048 TTM8	3048		
3200 TTM8	3200		
3280 TTM8	3280		
3600 TTM8	3600		
4000 TTM8	4000		
4400 TTM8	4400		

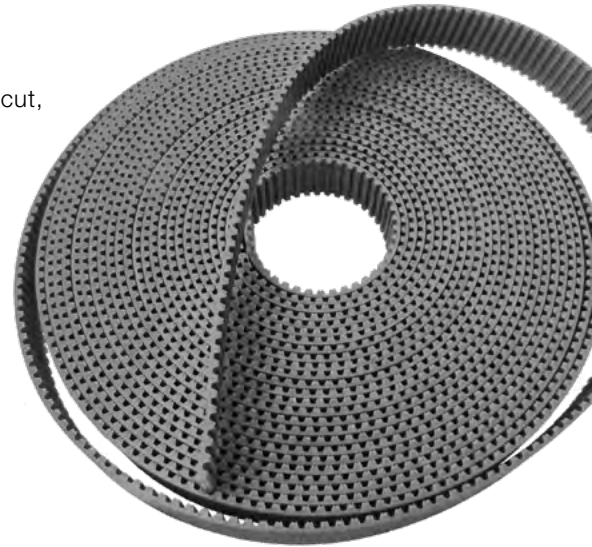


RUBBER OPEN-ENDED

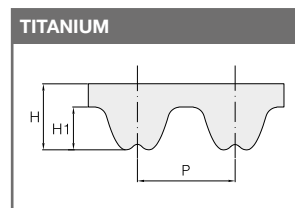
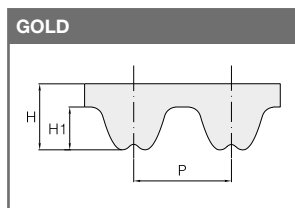
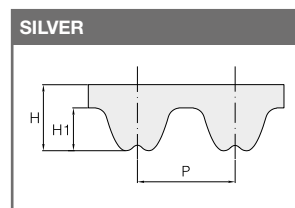
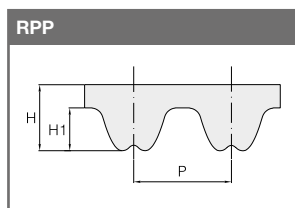
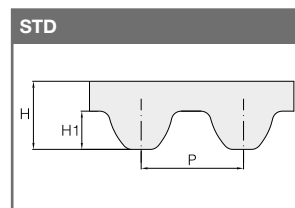
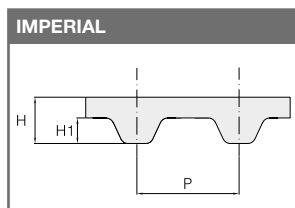
TIMING BELT ROLLS

Rubber open-ended synchronous belts are specially suitable for linear drives, accurate positioning and reversal drives. A high load capacity, no maintenance cost and very low noise level, make this belt a perfect alternative to chain or cable reverse drives.

Megadyne open-ended rubber belts, produced both in straight and spiral cut, are available in the following profiles, pitches and constructions:



STANDARD RANGE:



(SLV3 14M • GLD2 8M • GLD2 14M ON DEMAND)

MEGAPOWER

PU ENDLESS TIMING BELTS



MEGAPOWER timing belts are manufactured by a unique thermoset moulding process. The high-grade polyurethane gives excellent abrasion and shear resistance, combined with a variety of graded steel cords, ensuring high strength and tractive resistance. The result is a timing belt with excellent dimensional stability.

MEGAPOWER moulded timing belts are manufactured to a tight tolerance range, which assures consistent length and thickness. The combination of these factors results in MEGAPOWER, performing to the highest physical and chemical levels.

MEGAPOWER belts perform especially well on light synchronised and stepped drives, in office automation and domestic appliance applications.

To meet the needs of industry, Megadyne introduces MEGAPOWER 2, a new generation of thermoset polyurethane timing belts.

Our unique new moulding process, combined with a high performance compound, ensures superior dynamic performance, more transmittable power and excellent dimensional stability.

This translates to an extra 30% of MEGAPOWER 2 performance.

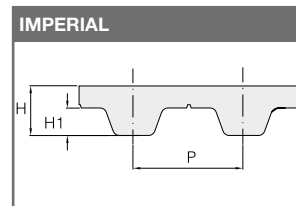
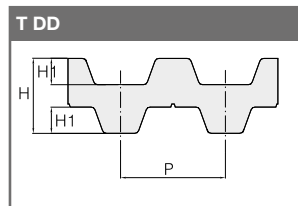
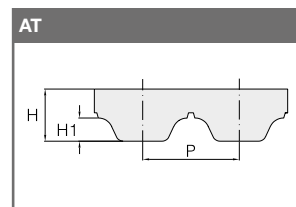
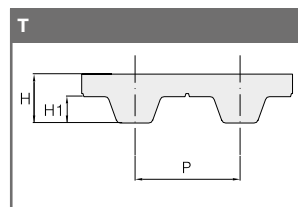
MECHANICAL FEATURES

- Consistent dimensional stability
- Low pre-tension
- Low noise
- High abrasion resistance
- Low maintenance
- High flexibility
- Linear speeds up to 30 m/sec

CHEMICAL FEATURES

- Good resistance to aging, hydrolisis, UVA rays, ozone
- Working temperature: -25°C to +80°C (up to +110°C for short periods)
- High resistance to oils, fats and greases
- Good resistance to most acids and Alkalis

STANDARD RANGE:



MEGAPOWER FC are the new belts from Megadyne for the food processing industry, made with food contact approved materials according to European regulations EU 1935/2004, EU 10/2011 and EU 174/2015.

Main features:

- Resistance to most cleaning chemicals and humid, wet environments
- High acceleration, synchronizing and multi stop/start
- Easier belt wash-down
- Working temperature -25°C/+80°C



MEGAPOWER - PU ENDLESS TIMING BELTS

T2.5	
STD. WIDTH (mm)	
4/6/8/10/12	

T2.5	
CODE	PITCH LENGTH (mm)
120	120
145	145
160	160
177,5	177,5
180	180
182,5	182,5
200	200
210	210
230	230
245	245
265	265
277,5	277,5
285	285
290	290
305	305
317,5	317,5
330	330
342,5	342,5
380	380
395	395
420	420
480	480
500	500
540	540
600	600
620	620
650	650
680	680
700	700
780	780
880	880
915	915
950	950
1185	1185
P	2,5
H	1,3
H₁	0,7

T5	
STD. WIDTH (mm)	
6/8/10/12/16/20/25	

T5	
CODE	PITCH LENGTH (mm)
120	120
150	150
165	165
180	180
185	185
200	200
210	210
215	215
220	220
225	225
245	245
250	250
255	255
260	260
270	270
275	275
280	280
295	295
300	300
305	305
330	330
340	340
350	350
355	355
365	365
375	375
390	390
395	395
400	400
410	410
420	420
425	425
440	440
445	445
450	450
455	455
460	460
475	475
480	480
500	500
510	510
515	515
515*	515*
525*	525*
545	545
550	550
560	560
560*	560*
575	575
590	590
600	600
610	610
620	620
630	630
640	640
650	650
660	660

675	675
690	690
700	700
720	720
725	725
750	750
765	765
780	780
800	800
815	815
830	830
840	840
850	850
860	860
885	885
900	900
920	920
940	940
990	990
1000	1000
1075	1075
1100	1100
1160	1160
1200	1200
1215	1215
1275	1275
1280	1280
1315	1315
1355	1355
1380	1380
1440	1440
1470	1470
1500	1500
1580	1580
1955	1955
P	5
H	2,2
H₁	1,2

T10	
STD. WIDTH (mm)	
10/12/16/20/25/32/50/75	

T10	
CODE	PITCH LENGTH (mm)
260	260
320	320
340	340
370	370
390	390
400	400
410	410
440	440
450	450
480	480
500	500
530	530
550	550
560	560
600	600
600*	600*
610	610
630	630
630*	630*
650	650
660	660
680	680
690	690
700	700
720	720
720*	720*
730	730
750	750
780	780
800*	800*
810	810
840	840
850	850
880	880
890	890
900	900
910	910
920	920
920*	920*
950	950
960	960
970	970
980	980
1000	1000
1010	1010
1050	1050
1080	1080
1100	1100
1110	1110
1140	1140
1150	1150
1200	1200
1210	1210
1240	1240
1250	1250
1300	1300
1320	1320

1350	1350
1390	1390
1400	1400
1420	1420
1440	1440
1450	1450
1460	1460
1500	1500
1560	1560
1600	1600
1610	1610
1700	1700
1750	1750
1780	1780
1800	1800
1880	1880
1960	1960
2250	2250
P	10
H	4,5
H₁	2,5

* without gap

MEGAPOWER - PU ENDLESS TIMING BELTS

T5 DD		T10 DD		AT5		AT10	
STD. WIDTH (mm)		STD. WIDTH (mm)		STD. WIDTH (mm)		STD. WIDTH (mm)	
6/8/10/12/16/20/25		10/12/16/20/25/32/50/75		6/8/10/12/16/20/25		10/12/16/20/25/32/50/75	
T5 DD		T10 DD		AT5		AT10	
CODE	PITCH LENGTH (mm)	CODE	PITCH LENGTH (mm)	CODE	PITCH LENGTH (mm)	CODE	PITCH LENGTH (mm)
410 DD	410	260 DD	260	225	225	370	370
460 DD	460	530 DD	530	255	255	500	500
515 DD	515	660 DD	660	275	275	560	560
525 DD	525	700 DD	700	280	280	580	580
550 DD	550	720 DD	720	300	300	600	600
590 DD	590	800 DD	800	330	330	610	610
620 DD	620	840 DD	840	340	340	630	630
650 DD	650	900 DD	900	375	375	660	660
685 DD	685	920 DD	920	390	390	700	700
700 DD	700	980 DD	980	420	420	730	730
750 DD	750	1010 DD	1010	450	450	780	780
815 DD	815	1080 DD	1080	455	455	800	800
840 DD	840	1100 DD	1100	480	480	810	810
860 DD	860	1150 DD	1150	500	500	840	840
940 DD	940	1210 DD	1210	525	525	880	880
1100 DD	1100	1240 DD	1240	545	545	890	890
P	5	1250 DD	1250	600	600	920	920
H	3,40	1320 DD	1320	610	610	960	960
H₁	1,2	1350 DD	1350	620	620	980	980
		1420 DD	1420	630	630	1000	1000
		1500 DD	1500	660	660	1010	1010
		1610 DD	1610	670	670	1050	1050
		1800 DD	1800	710	710	1080	1080
		1880 DD	1880	720	720	1100	1100
		P	10	750	750	1150	1150
		H	7	780	780	1190	1190
		H₁	2,5	825	825	1200	1200
				860	860	1210	1210
				975	975	1220	1220
				1050	1050	1230	1230
				1125	1125	1240	1240
				1500	1500	1250	1250
				2000	2000	1280	1280
				P	5	1300	1300
				H	2,7	1320	1320
				H₁	1,2	1350	1350
						1360	1360
						1400	1400
						1420	1420
						1480	1480
						1500	1500
						1600	1600
						1630	1630
						1700	1700
						1720	1720
						1800	1800
						1860	1860
						1940	1940
						P	10
						H	4,8
						H₁	2,5

MEGAPOWER - PU ENDLESS TIMING BELTS

MXL		XL		L		H	
STD. WIDTH (mm)		STD. WIDTH (mm)		STD. WIDTH (mm)		STD. WIDTH (mm)	
3,2/4,8/6,4		6,4/7,9/9,4		12,7/19,1/25,4		19,1/25,4/38,1/50,8/76,2	
MXL		XL		L		H	
CODE	PITCH LENGTH (mm)	CODE	PITCH LENGTH (mm)	CODE	PITCH LENGTH (mm)	CODE	PITCH LENGTH (mm)
45,6	115,8	60	152,4	86	218,6	230	584,2
48	121,9	70	177,8	124	314,3	240	609,6
57,6	146,3	76	193,0	150	381,0	270	685,8
60	152,4	80	203,2	173	438,2	300	762,0
60,8	154,4	90	228,6	187	476,2	330	838,2
63,2	160,5	100	254,0	202	514,4	360	914,4
64	162,5	110	279,4	210	533,4	390	990,6
65,6	166,6	120	304,8	225	571,5	420	1066,8
70,4	178,8	130	330,2	240	609,6	450	1143,0
72,8	184,9	134	340,3	255	647,7	480	1219,2
73,6	186,9	140	355,6	270	685,8	510	1295,4
76,8	195,1	150	381,0	285	723,9	P	12,7
80,8	205,2	160	406,4	300	762,0	H	4,3
81,6	207,2	170	431,8	322	819,2	H₁	2,29
82,4	209,2	180	457,2	345	876,3		
84	213,3	190	482,6	367	933,4		
88	223,5	194	492,7	390	990,6		
91,2	231,6	200	508,0	420	1066,8		
94,4	239,7	210	533,4	450	1143,0		
96	243,8	220	558,8	480	1219,2		
104	264,1	230	584,2	510	1295,4		
105,6	268,2	240	609,6	540	1371,6		
108	274,3	250	635,0	570	1447,8		
112	284,4	260	660,4	600	1524,0		
116	294,6	270	685,8	P	9,525		
120	304,8	288	731,5	H	3,6		
124	314,9	290	736,6	H₁	1,9		
140	355,6	300	762,0				
152	386,1	356	904,2				
160	406,4	414	1051,5				
176,8	449,1	450	1143,0				
204,8	520,1	566	1437,6				
224	568,9	P	5,08				
228	579,1	H	2,3				
246,4	625,8	H₁	1,27				
252	640,0						
260	660,4						
265,6	674,6						
281,6	715,2						
288	731,5						
316	802,6						
329,6	837,1						
345,6	877,8						
363,2	922,5						
388	985,5						
P	2,032						
H	1,2						
H₁	0,51						

MEGAFLEX

PU TRULY ENDLESS TIMING BELTS



MEGAFLEX timing belts are manufactured in thermoplastic polyurethane, with continuous spiral steel cords.

This type of belt, developed by our Research & Development, offers good running characteristics and high traction loads. They are especially suited for power transmission and conveying with high loads and high speeds (up to 10.000 RPM). The addition of a nylon coating on the teeth during production enhances the running properties for specific applications and reduces the noise frictional coefficient. An extra thickness of special coating is also possible on the back of the belt offering extra protection against aggressive or heavy products.

MEGAFLEX belts are truly endless, enabling them to deliver exceptional performance.



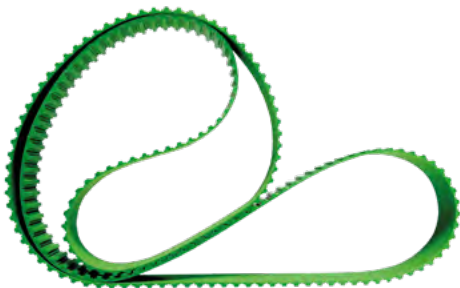
Megadyne MEGAFLEX timing belts are available from 1.500 up to 22.600 mm length. On customer request and with minimum quantity, MEGAFLEX belt can be produced with different hardness or special compounds:

- 90 ShA food quality polyurethane for contact with food
- 92 ShA silicon free for painting system food and medical products
- 95 ShA glass reinforced
- PU blue FCM certified for contact with food
- 98 ShA extra hard polyurethane
- PU dark blue XMD (Metal and X-ray detectable)
- 92 ShA higher resistance to temperature



Megadyne has expanded its range of MEGAFLEX with the new **MEGAFLEX MegaEco Biobased**, the sustainable belt solution for power transmission system. Made with polymer coming partially from vegetable sources, this "eco-friendly" belt can support companies to reduce CO₂ footprint.

MEGAFLEX MegaEco Biobased AT10 is available from stock. Please contact Megadyne team for information about other pitches.

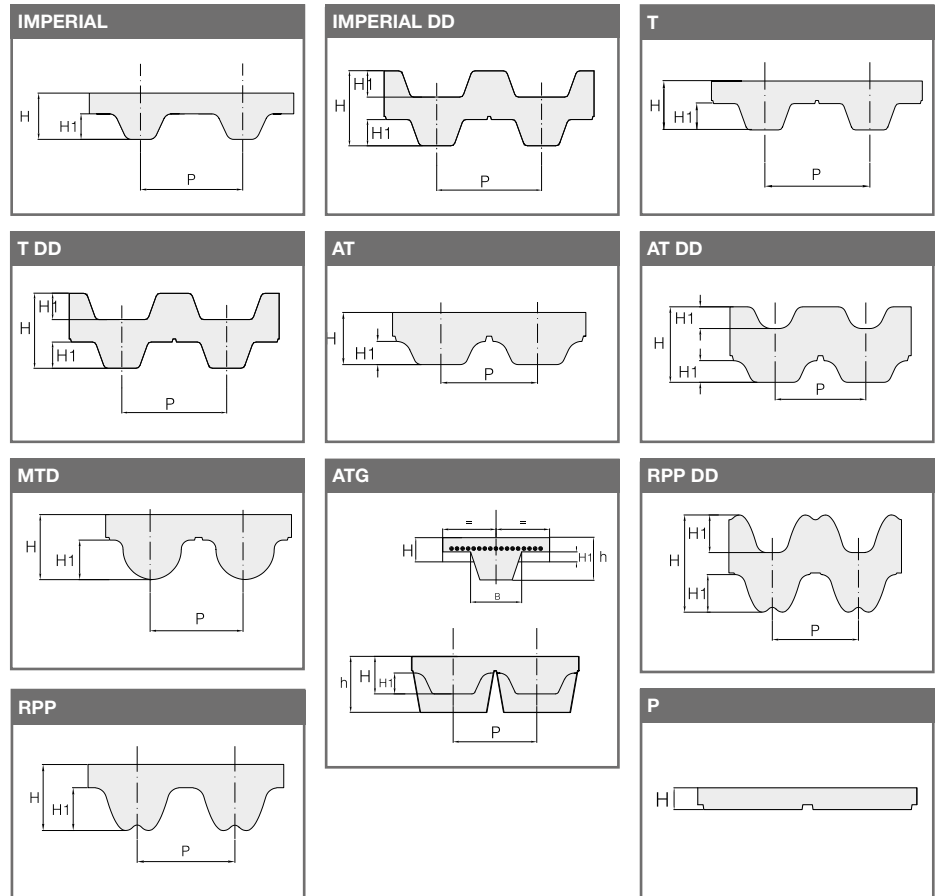




MEGAFLEX

PU TRULY ENDLESS TIMING BELTS

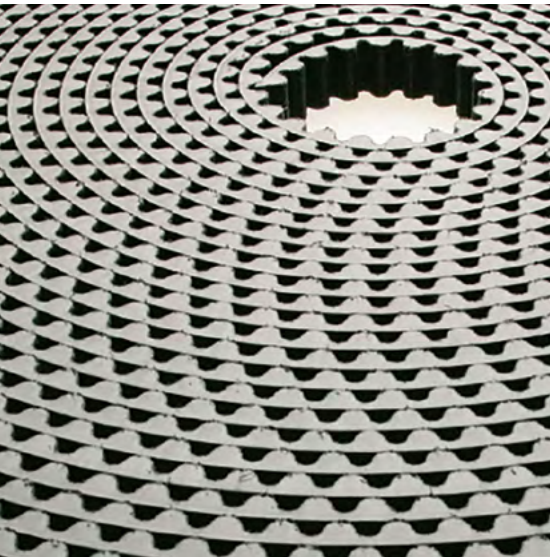
STANDARD RANGE:



SPECIAL CONSTRUCTIONS

- High flex cords
- (NFT) nylon fabric on the teeth (available from 1.900 mm length)
- Custom milling, grinding and drilling to specification
- Additional continuous coatings on the back of the belt in:
 - PU 85 ShA
 - Tenax 50 ShA
 - Linatex 40 ShA
 - Yellow PUR 60 ShA
 - Grey PUR 60 ShA
 - Neoprene rubber 70 ShA

Other hardnesses available on request.



MEGALINEAR

PU OPEN-ENDED TIMING BELTS

MEGALINEAR open-ended timing belts are manufactured in thermoplastic polyurethane, that gives superior wear and abrasion resistance.

Various grades of steel cords offer good running characteristics, even with high tractive loads. Manufactured to tight tolerances, MEGALINEAR delivers reliability and excellent dimensional stability. The addition of a Nylon coating on the tooth and/or the back of the belt during production, enhances the running properties for specific applications. An extra thickness of polyurethane is also possible on the back of the belt, offering extra protection against aggressive or heavy products.

MEGALINEAR can be supplied as open length rolls (standard roll length is 100 metres) or as endless jointed belts, available in a wide range of solutions with numerous tooth design: Imperial profile, metric profile with or without guide, parabolic profile, flat...

MEGALINEAR is also available with alternative reinforcement cords such as:

- Kevlar (K)
- High Flex (HF)
- High Performance (HP)
- Extra High Performance (XHP2)
- High Performance Flex (HPF).

Megadyne has expanded its range of MEGALINEAR with the new belts: **MEGALINEAR QST, MEGALINEAR GW AND MEGALINEAR FC, FC-S, FCM, MEGALINEAR MegaEco Biobased.**

MEGALINEAR QST

Specifically designed to reduce the noise level generated during high speed operation, the MEGALINEAR QST is completely self-tracking, there is no need for flanges on the pulleys. The nylon faced helical offset teeth provide a high torque capacity.

MEGALINEAR GW

For heavy applications, Megadyne introduces the MEGALINEAR GW, a high performance thermoplastic polyurethane belt, that guarantees a greater transmittable power under continuous high loads.

MEGALINEAR FC, FC-S, FCM

MEGALINEAR FC, FC-S and FCM belts match the power and precision for synchronous conveying meeting the criteria where food contact is required. These belts guarantee zero risk of slippage, even in greasy and humid environment, and zero risk of fraying and detaching of back profile.

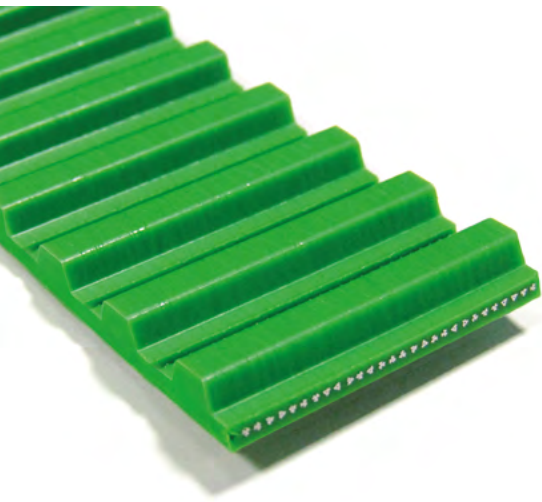
Both MEGALINEAR FC and FCM can be made with a special Metal and X-ray detectable compound. MEGALINEAR XMD decreases the risk of contamination from belt fragments protecting Consumer Safety.

MECHANICAL FEATURES

- Consistent dimensional stability
- Low pre-tension
- Low noise
- High abrasion resistance
- Low maintenance
- High flexibility
- Linear speeds up to 80 m/sec
- High precision linear positioning

CHEMICAL FEATURES

- Good resistance to aging, hydrolysis, UVA rays, ozone
- Working temperature: -25°C to +80°C (up to +110°C for short periods)
- Working temperature (food range): -25 °C / +70 °C
- High resistance to oils, fats and greases
- Good resistance to most acids and Alkalies
- Compatible for fabrication with other thermoplastic materials



MEGALINEAR

PU OPEN-ENDED TIMING BELTS

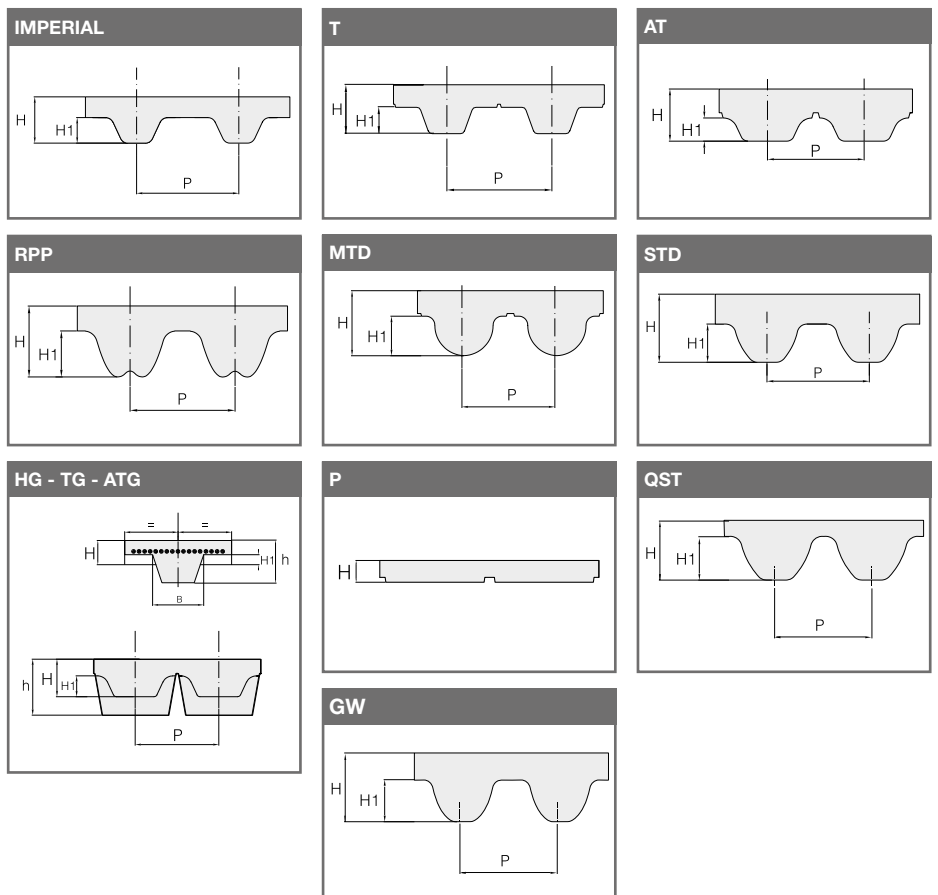
MEGALINEAR MegaEco Biobased

MEGALINEAR MegaEco Biobased is a part of the Megadyne MegaEco range, the sustainable belt solution for power transmission system. Made with polymer coming partially from vegetable sources, this "eco-friendly" belt can support companies to reduce CO₂ footprint.

MEGALINEAR MegaEco Biobased AT10 is available from stock. Please contact Megadyne team for information about other pitches.



MEGALINEAR STANDARD RANGE



MEGALINEAR - PU OPEN-ENDED TIMING BELTS

MXL		XL		L		H		H*	
STD. WIDTH (inches)		STD. WIDTH (inches)		STD. WIDTH (inches)		STD. WIDTH (inches)		STD. WIDTH (inches)	
0,17		0,25		0,37		0,50		8,00	
0,37		0,37		0,50		0,75		10,00	
0,50		0,50		0,75		1,00		12,00	
		0,75		1,00		1,50		16,00	
		1,00		1,50		2,00		20,00	
		1,50		2,00		3,00			
		2,00		4,00		4,00			
						6,00			
P	2,032	P	5,08	P	9,525	P	12,7	P	12,7
H	1,14	H	2,3	H	3,6	H	4,3	H	4,3
H ₁	0,66	H ₁	1,27	H ₁	1,90	H ₁	2,29	H ₁	2,29

XH		T2.5		T5		T5*		T10	
STD. WIDTH (inches)		STD. WIDTH (mm)		STD. WIDTH (mm)		STD. WIDTH (mm)		STD. WIDTH (mm)	
1,00		10		6		250		12	
1,50		16		10		500		16	
2,00		20		16				25	
3,00				25				32	
4,00				32				50	
6,00				50				75	
				75				100	
				100				150	
				150					
P	22,225	P	2,5	P	5	P	5	P	10
H	11,2	H	1,3	H	2,2	H	2,20	H	4,5
H ₁	6,35	H ₁	0,7	H ₁	1,2	H ₁	1,2	H ₁	2,5

T10*		T10 WITHOUT GAP		T20		AT3		AT5	
STD. WIDTH (mm)		STD. WIDTH (mm)		STD. WIDTH (mm)		STD. WIDTH (mm)		STD. WIDTH (mm)	
200		16		25		10		6	
250		25		32		20		10	
300		32		50		25		16	
400		50		75		50		25	
450		75		100				32	
500				150				50	
								75	
								100	
P	10	P	10	P	20	P	3	P	5
H	4,5	H	4,5	H	8	H	1,9	H	2,7
H ₁	2,5	H ₁	2,5	H ₁	5	H ₁	1,1	H ₁	1,2

* Only with Kevlar® cords and reduced number of cords

MEGALINEAR - PU OPEN-ENDED TIMING BELTS

AT10	
STD. WIDTH (mm)	
16	
25	
32	
50	
75	
100	
150	
P	10
H	4,5
H₁	2,5

AT10 WITHOUT GAP	
STD. WIDTH (mm)	
25	
32	
50	
75	
100	
P	10
H	4,5
H₁	2,5

MEGAC4T™ AT10	
STD. WIDTH (mm)	
25	
50	
75	
100	
P	10
H	4,5
H₁	2,5

AT20	
STD. WIDTH (mm)	
25	
32	
50	
75	
100	
150	
200	
P	20
H	8
H₁	5

RPP5	
STD. WIDTH (mm)	
10	
15	
25	
30	
50	
75	
P	5
H	3,8
H₁	2

RPP8	
STD. WIDTH (mm)	
10	
15	
20	
30	
50	
85	
100	
P	8
H	5,4
H₁	3,2

RPP14	
STD. WIDTH (mm)	
40	
55	
85	
115	
150	
P	14
H	10
H₁	6

RPP14 XHP2	
STD. WIDTH (mm)	
40	
55	
85	
115	
150	
P	14
H	10,2
H₁	6

MTD 3	
STD. WIDTH (mm)	
10	
20	
25	
50	
P	3
H	2,2
H₁	1,13

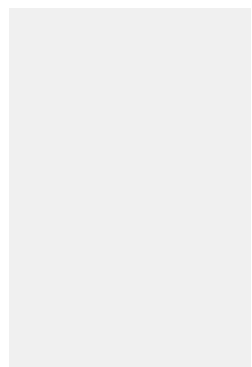
MTD 5	
STD. WIDTH (mm)	
10	
15	
25	
50	
P	5
H	3,6
H₁	2,1

MTD 8	
STD. WIDTH (mm)	
10	
15	
20	
30	
50	
85	
100	
P	8
H	5,6
H₁	3,4

MTD 14	
STD. WIDTH (mm)	
25	
40	
55	
85	
100	
115	
P	14
H	10
H₁	6,1

MTD14 XHP2	
STD. WIDTH (mm)	
25	
40	
55	
85	
100	
115	
P	14
H	10
H₁	6,1

STD 5	
STD. WIDTH (mm)	
10	
15	
25	
50	
75	
100	
150	
P	5
H	3,4
H₁	1,91



MEGALINEAR - PU OPEN-ENDED TIMING BELTS

STD 8		TG5		TG10 K6		TG10 K13		TG20	
STD. WIDTH (mm)		STD. WIDTH (mm)		STD. WIDTH (mm)		STD. WIDTH (mm)		STD. WIDTH (mm)	
10		25		50		25		50	
12		32				32		75	
15		50				50		100	
20						75			
30						100			
50		P 5		P 10		P 10		P 20	
85		H 2,2		H 4,5		H 4,5		H 8	
P	8	H₁	1,2	H₁	2,5	H₁	2,5	H₁	5
H	5,1	B	6	B	6	B	13	B	13
H₁	3,05	h	5	h	5,3	H	8,5	h	8,5

ATG5		ATG10 K6		ATG10 K13		ATG20		HG	
STD. WIDTH (mm)		STD. WIDTH (mm)		STD. WIDTH (mm)		STD. WIDTH (mm)		STD. WIDTH (inch)	
25		50		25		75		1,50	
32				32		150		2,00	
50				50				3,00	
				75				4,00	
				100				6,00	
				150					
P	5	P	10	P	10	P	20	P	12,7
H	2,7	H	4,5	H	4,5	H	8	H	4,3
H₁	1,2	H₁	2,5	H₁	2,5	H₁	5	H₁	2,29
B	6	B	6	B	13	B	13	B	13
h	5,5	h	5,3	h	8,5	h	9,4	h	8,5

P1		P2		P3		P4			
STD. WIDTH (mm)		STD. WIDTH (mm)		STD. WIDTH (mm)		STD. WIDTH (mm)			
10		25		30		25			
20		50		60		50			
		75		100		100			
		100		120					
H	1	H	2	H	3,2	H	4		

QST 5		QST 8		QST 14		GW 14		GW 20	
STD. WIDTH (mm)		STD. WIDTH (mm)		STD. WIDTH (mm)		STD. WIDTH (mm)		STD. WIDTH (mm)	
12		16		35		50		50	
24		25		52,5		100		100	
		32		70		150		150	
		50		105		200		200	
P	5	P	8	P	14	P	14	P	20
H	3,6	STEEL CORD	5,33	STEEL CORD	8,64	H	10	H	14,3
H₁	1,91	HP CORD	5,60	XHP CORD	9	H₁	6	H₁	8,57
		H₁	3,05	H₁	5,33				



FLAT BELTS

MEGAFLAT



MEGAFLAT

PU ENDLESS FLAT BELTS

POLYURETHANE				
	P 0	P 102		
TENSILE REINFORCEMENT	NO FABRIC	ELASTIC		
INSTALLATION TENSION X CM WIDTH (N) ENDLESS	-	10		
MIN. PULLEY DIA. mm	8	25		
THICKNESS mm	0,9	1,8*		
STANDARD LENGTH mm	210/2500	210/2500		
COATING MATERIAL	NO	POLYURETHANE/SILICONE		
ANTISTATIC	NO	POSSIBLE		

	P 108	P 110	P 120	P 155
TENSILE REINFORCEMENT	POLYESTER / COTTON	POLYESTER FABRIC	POLYESTER FABRIC	ARAMID /POLYESTER
INSTALLATION TENSION X CM WIDTH (N) ENDLESS	200	150	300	350
MIN. PULLEY DIA. mm	8	12	20	30
THICKNESS mm	0,8*	1,0*	1,5*	2*
STANDARD LENGTH mm	210/3850	210/3850	210/4300	210/4300
COATING MATERIAL	POLYURETHANE /SILICONE	POLYURETHANE /SILICONE	POLYURETHANE /SILICONE	POLYURETHANE /SILICONE
ANTISTATIC	POSSIBLE	POSSIBLE	POSSIBLE	POSSIBLE

	S 108	S 110	S 120	S 155
TENSILE REINFORCEMENT	POLYESTER / COTTON	POLYESTER	POLYESTER	ARAMID /POLYESTER
INSTALLATION TENSION X CM WIDTH (N) ENDLESS	180	125	350	400
MIN. PULLEY DIA. mm	8	12	20	25
THICKNESS mm	0,8*	1,0*	1,5*	2,0*
STANDARD LENGTH mm	210/3850	210/3850	210/4300	210/3800
COATING MATERIAL	POLYURETHANE /SILICONE	POLYURETHANE /SILICONE	POLYURETHANE /SILICONE	POLYURETHANE /SILICONE
ANTISTATIC	POSSIBLE	POSSIBLE	POSSIBLE	POSSIBLE

*Increase of thickness by about 0,3/0,5 mm for belts coated both sides.

FLAT BELTS



V-BELTS

WRAPPED (EXTRA, OLEOSTATIC, OLEOSTATIC GOLD)
WRAPPED DOUBLE SIDE (ESAFLEX)
WRAPPED BARE BACK (XDV2)
BANDED (PLURIBAND)
RAW EDGE (LINEA X, LINEA GOLD, VARISECT)
ACCU-LINK®
MEGAWELD

RUBBER WRAPPED BELTS

EXTRA, OLEOSTATIC, OLEOSTATIC GOLD



Wrapped V-belts are manufactured in polybutadiene compound. High variety of belt sizes available permits the application of Megadyne V-belts on all types of industrial equipments. Applied technology allows to reach so good dimensional precision in V-belts to make them suitable for multiple transmissions. This dimensional stability continues also during belt use.

MECHANICAL FEATURES:

- Smooth starting and running
- Wide range of driven speeds, using standard electric motors
- Low maintenance
- High efficient
- No need for lubrication
- Extremely wide horsepower ranges
- Dampen vibration between driver and driven pulleys
- Silent operations
- Long service life
- Easy installation
- Reduction in drive dimension

EXTRA

Extra belts were designed to offer durable and reliable performances on light and medium-duty drives. They represent an affordable solution for transmission systems of all industrial sectors.

OLEOSTATIC

Oleostatic rubber belts are developed with high resistant tensile elements, they are characterised by high performances, length stability during belts life, conductivity, oil and heat resistance. They are particularly suitable for centrifugal pumps, compressor, tool machines, generators, high power mills and stone mills.

OLEOSTATIC GOLD

Different materials and design features, together with an improved production process, have led to the development of a new class of higher rated wrapped V-belts. The Oleostatic Gold can operate in a wide range of industrial applications, within a large spread of load capacities and speeds - offering rated performance from 100 to 8.000 RPM and power capability from 1 to 400 kW, meanwhile granting large cost advantages for the end users.

MEGAMATCH ^{MEGA}MATCH

All Oleostatic and Extra V-belts carrying the MEGAMATCH logo are made and supplied according to the matching set tolerances and limits indicated by the relevant international standards.

RUBBER WRAPPED BELTS

ESAFLEX, XDV2, PLURIBAND



ESAFLEX

Esaflex are ideally suited for serpentine drives where power needs to be transmitted equally from both sides of the belt. Double wrapped cotton neoprene cover is added for excellent resistance to abrasive wear, heat, ozone, sunlight, grease oil or dirt. Centrally located cord and special synthetic rubber compounds assure long belt life and a smooth drive.



XDV2

The XDV2 belts has been created for drives with small pulley diameters and high temperature peaks, combined with a high grade of moisture and humidity. It withstands the harshest environmental requirements, such as oil and grease contaminated drives of transmissions were grits may interfere between pulleys and belt.

Thanks to its characteristics, the XDV2 perfectly matches the requirements of clutching drives as the aramid cords protect the belt against shock loads while maintaining its length constant.

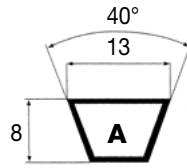
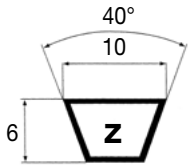
PLURIBAND

Banded version of V-belts eliminates belt whip and turnover on wedge-type drives. Patented bending process insures smooth operation. Oil and heat resistant, static dissipating.



Special constructions are available on request.

EXTRA / OLEOSTATIC GOLD BELTS



SECTION Z	
CODE	INTERNAL LENGTH LI (mm)
EXTRA AND OLEOSTATIC GOLD	
Z 16	410
Z 18	460
Z 19	480
Z 19 1/2	500
Z 20	508
Z 20 1/2	520
Z 21	530
Z 21 1/4	540
Z 21 1/2	545
Z 21 3/4	555
Z 22	560
Z 22 1/4	565
Z 22 1/2	575
Z 23	585
Z 23 1/2	600
Z 23 3/4	605
Z 24	610
Z 24 3/4	630
Z 25	635
Z 25 1/2	650
Z 26	660
Z 26 1/2	670
Z 27	685
Z 27 1/2	700
Z 28	710
Z 28 1/2	725
Z 29	735
Z 29 1/2	750
Z 30	765
Z 30 1/2	775
Z 30 3/4	785
Z 31	787
Z 31 1/2	800
Z 32	815
Z 32 1/2	825
Z 33	840
Z 33 1/2	850
Z 34	865
Z 34 1/4	870
Z 34 1/2	875
Z 35	890
Z 35 1/2	900
Z 36	915
Z 36 1/2	925
Z 36 3/4	935
Z 37	945
Z 37 1/2	950
Z 38	965
Z 38 1/4	975
Z 38 1/2	978
Z 39	1000
Z 40	1016

Z 40 1/2	1030
Z 41	1040
Z 41 1/2	1050
Z 41 3/4	1060
Z 42	1070
Z 42 1/2	1080
Z 43	1090
Z 43 1/4	1100
Z 44	1120
Z 45	1145
Z 46	1180
Z 47	1194
Z 47 3/4	1215
Z 48	1225
Z 48 1/2	1232
Z 49	1245
Z 50	1270
Z 50 1/2	1285
Z 51	1300
Z 52	1320
Z 53	1345
Z 54	1371
Z 55	1400
Z 56	1422
Z 57	1450
Z 58	1473
Z 59	1500
Z 59 1/2	1515
Z 60	1525
Z 61	1550
Z 62	1575
Z 63	1600
Z 64	1625
Z 65	1651
Z 66	1675
Z 67	1700
Z 68	1727
Z 68 1/2	1740
Z 69	1750
Z 70	1778
Z 71	1803
Z 73	1855
Z 75	1905
Z 78	1982
Z 79	2007
Z 83 1/2	2100
Z 88	2235
Z 93	2360
Z 98	2489

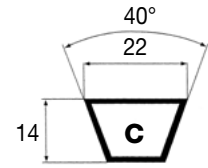
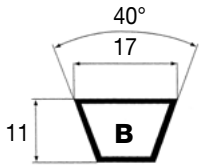
SECTION A	
CODE	INTERNAL LENGTH LI (mm)
EXTRA AND OLEOSTATIC GOLD	
A 18	457
A 19	480
A 20	508
A 21	535
A 21 3/4	552
A 22	560
A 23	587
A 23 1/2	600
A 24	610
A 24 1/2	620
A 24 3/4	630
A 25	637
A 25 1/2	647
A 26	660
A 26 1/2	670
A 27	686
A 27 1/2	700
A 28	710
A 28 1/2	724
A 29	737
A 29 1/2	750
A 30	767
A 30 1/2	775
A 31	787
A 31 1/2	800
A 32	813
A 32 1/2	825
A 33	838
A 33 1/4	847
A 33 1/2	850
A 34	867
A 34 1/2	875
A 35	900
A 35 1/2	902
A 36	914
A 36 1/2	925
A 37	942
A 37 1/4	946
A 37 1/2	950
A 38	965
A 38 1/2	975
A 39	992
A 39 1/2	1000
A 40	1016
A 40 1/2	1030
A 41	1041
A 41 1/2	1050
A 41 3/4	1060
A 42	1067
A 42 1/2	1075
A 43	1100
A 43 1/2	1105

A 43 3/4	1111
A 44	1120
A 44 1/2	1132
A 45	1143
A 45 1/2	1150
A 46	1168
A 46 1/2	1180
A 47	1200
A 47 1/2	1207
A 48	1220
A 48 1/4	1225
A 48 1/2	1232
A 49	1250
A 50	1270
A 51	1300
A 51 1/2	1307
A 52	1320
A 52 1/2	1337
A 53	1346
A 53 1/4	1355
A 54	1372
A 55	1400
A 56	1422
A 57	1450
A 58	1475
A 59	1500
A 60	1525
A 61	1550
A 62	1575
A 63	1600
A 64	1625
A 65	1650
A 66	1676
A 67	1700
A 68	1725
A 69	1750
A 70	1775
A 70 3/4	1780
A 71	1800
A 72	1825
A 73	1854
A 74	1880
A 75	1900
A 76	1930
A 77	1956
A 78	1980
A 79	2000
A 80	2032
A 81	2060
A 82	2083
A 83	2100
A 83 1/2	2120
A 84	2134
A 84 1/2	2146
A 85	2160
A 86	2187
A 86 1/2	2200
A 87	2212
A 88	2240

A 89	2267
A 90	2286
A 91	2311
A 92	2337
A 93	2360
A 94	2388
A 95	2413
A 96	2438
A 97	2464
A 97 1/2	2475
A 98	2500
A 100	2540
A 102	2591
A 104	2650
A 105	2667
A 107	2725
A 108	2743
A 110	2800
A 112	2845
A 113	2870
A 114	2896
A 116	2946
A 118	3000
A 120	3048
A 124	3150
A 128	3250
A 130	3302
A 132	3350
A 134	3404
A 136	3454
A 140	3550
A 144	3658
A 147	3737
A 148	3750
A 155	3937
A 158	4000
A 162	4115
A 167	4250
A 173	4394
A 177	4500
A180 *	4572
A 187	4750
A 197	5000
A 210	5334
A 217	5477

* Only EXTRA

EXTRA / OLEOSTATIC GOLD BELTS



SECTION B	
CODE	INTERNAL LENGTH LI (mm)
EXTRA AND OLEOSTATIC GOLD	
B 22 1/2	570
B 23	587
B 24	612
B 25	637
B 26	650
B 26 1/2	673
B 27	686
B 28	710
B 28 1/2	725
B 29	737
B 29 1/2	750
B 30	762
B 30 1/2	775
B 31	787
B 31 1/2	800
B 32	812
B 32 1/4	822
B 32 1/2	825
B 33	838
B 33 1/2	850
B 34	867
B 34 1/2	875
B 35	889
B 35 1/2	900
B 35 3/4	907
B 36	917
B 36 1/2	925
B 36 3/4	937
B 37	942
B 37 1/2	950
B 38	965
B 38 1/2	975
B 39	990
B 39 1/2	1000
B 40	1016
B 40 1/2	1030
B 41	1040
B 41 1/2	1050
B 41 3/4	1060
B 42	1067
B 42 1/2	1075
B 43	1090
B 43 1/4	1096
B 43 1/2	1100
B 44	1120
B 44 1/4	1127
B 45	1142
B 45 1/2	1155
B 46	1175
B 46 1/2	1180
B 46 3/4	1187
B 47	1200

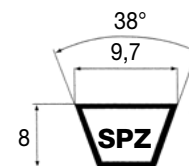
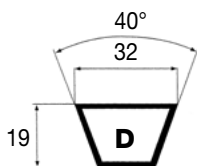
B 47 1/4	1202
B 47 1/2	1215
B 48	1225
B 48 1/2	1232
B 49	1250
B 50	1275
B 51	1300
B 52	1320
B 52 1/2	1336
B 53	1350
B 53 1/2	1360
B 54	1372
B 55	1400
B 55 1/2	1412
B 56	1422
B 57	1450
B 58	1473
B 59	1500
B 60	1525
B 61	1550
B 62	1575
B 63	1600
B 64	1625
B 64 1/2	1642
B 65	1650
B 66	1676
B 66 1/4	1682
B 66 1/2	1692
B 67	1700
B 67 1/4	1712
B 68	1725
B 69	1750
B 69 1/2	1761
B 70	1775
B 71	1800
B 72	1829
B 73	1850
B 74	1880
B 75	1900
B 76	1930
B 77	1950
B 78	1981
B 79	2000
B 80	2032
B 80 3/4	2050
B 81	2060
B 82	2083
B 83	2108
B 83 1/2	2120
B 84	2134
B 85	2160
B 86	2187
B 86 1/2	2200
B 87	2215
B 88	2240
B 89	2261
B 90	2286
B 91	2312

B 92	2337
B 93	2360
B 94	2388
B 94 1/2	2400
B 95	2413
B 96	2438
B 96 1/2	2450
B 97	2465
B 97 1/2	2477
B 98	2500
B 99	2515
B 100	2540
B 101	2565
B 102	2600
B 103	2616
B 104	2650
B 105	2667
B 106	2700
B 107	2718
B 108	2750
B 109	2769
B 110	2800
B 112	2845
B 112 1/2	2857
B 114	2900
B 115	2921
B 116	2950
B 118	3000
B 120	3048
B 122	3099
B 124	3150
B 126	3200
B 127	3227
B 128	3250
B 130	3302
B 131	3327
B 132	3350
B 133	3378
B 134	3407
B 135	3429
B 136	3450
B 138	3505
B 140	3550
B 142	3607
B 144	3658
B 146	3708
B 147	3737
B 148	3750
B 150	3810
B 151	3850
B 152	3861
B 154	3912
B 155	3950
B 156	3962
B 157	3987
B 158	4000
B 160	4064
B 161	4087

B 162	4115
B 163	4142
B 165	4200
B 167	4250
B 168	4267
B 173	4394
B 175	4450
B 177	4500
B 180	4572
B 186	4727
B 187	4750
B 188	4777
B 192	4877
B 195	4953
B 197	5000
B 204	5182
B 208	5300
B 210	5334
B 217	5507
B 220	5552
B 221	5577
B 223	5632
B 224	5657
B 225	5682
B 228	5757
B 229	5782
B 236	5994
B 237	6000
B 240	6062
B 248	6267
B 249	6287
B 253	6392
B 255	6442
B 256	6502
B 259	6542
B 264	6665
B 265	6700
B 269	6800
B 270	6825
B 276	7000
B 280	7100
B 285	7207
B 300	7587
B 315	7967
B 330	8347
B 345	8727
B 360	9107
B 361	9132
B 364	9207
B 366	9262
B 394	9972
B 433	10957
B 472	11957
B 512	13005
B 551	13995
B 553	14053
B 669	16992

SECTION C	
CODE	INTERNAL LENGTH LI (mm)
EXTRA AND OLEOSTATIC GOLD	
C 33 3/4	858
C 37 1/2	950
C 39 3/4	1013
C 43	1090
C 45	1150
C 46	1168
C 47	1194
C 48	1220
C 49	1250
C 51	1295
C 52	1320
C 53	1350
C 54	1372
C 55	1400
C 56	1425
C 57	1450
C 58	1473
C 59	1500
C 60	1524
C 61	1560
C 62	1576
C 62 1/4	1583
C 63	1600
C 65	1650
C 66	1676
C 67	1700
C 68	1727
C 69	1753
C 70	1778
C 71	1798
C 72	1829
C 73	1854
C 74	1879
C 75	1900
C 76	1930
C 77	1955
C 78	1978
C 79	2005
C 80	2032
C 81	2057
C 82	2080
C 83	2108
C 83 1/2	2121
C 84	2134
C 85	2159
C 86	2184
C 87	2208
C 88	2235
C 89	2261
C 90	2286
C 92	2337

EXTRA / OLEOSTATIC GOLD BELTS



C 93	2360
C 94	2388
C 95	2413
C 96	2438
C 96 1/2	2450
C 97	2462
C 97 1/2	2477
C 98	2500
C 99	2525
C 100	2540
C 101	2560
C 102	2591
C 104	2642
C 105	2667
C 106	2692
C 108	2750
C 110	2800
C 111	2818
C 112	2845
C 112 1/2	2858
C 114	2888
C 115	2921
C 116	2950
C 117	2965
C 118	3000
C 120	3048
C 122	3099
C 124	3150
C 126	3200
C 128	3250
C 130	3302
C 132	3350
C 134	3404
C 136	3456
C 138	3498
C 140	3550
C 142	3607
C 144	3658
C 147	3733
C 148	3750
C 150	3808
C 153	3902
C 158	4000
C 160	4064
C 161 1/2	4100
C 162	4115
C 165	4193
C 166	4216
C 167	4242
C 168	4267
C 170	4318
C 173	4394
C 175	4445
C 177	4500
C 180	4572
C 187	4750
C 190	4826
C 195	4953
C 197	5000

C 204	5182
C 208	5300
C 210	5334
C 216	5486
C 220	5550
C 222	5600
C 225	5678
C 228	5753
C 236	6000
C 238	6045
C 240	6062
C 248	6263
C 250	6300
C 255	6438
C 264	6670
C 265	6700
C 270	6822
C 276	6973
C 280	7100
C 285	7203
C 295	7493
C 297	7500
C 300	7582
C 303	7650
C 314	7976
C 315	7965
C 316	8000
C 320	8093
C 330	8382
C 336	8500
C 345	8723
C 360	9107
C 394	10000
C 420	10632
C 424	10733

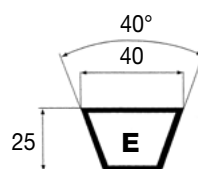
SECTION D*

CODE	INTERNAL LENGTH LI (mm)
OLEOSTATIC GOLD	
D 79	2010
D 98	2500
D 104	2650
D 110	2800
D 118	3000
D 120	3048
D 124	3150
D 128	3251
D 132	3435
D 134	3403
D 135	3429
D 136	3454
D 137	3475
D 140	3550
D 144	3658
D 148	3760
D 154	3914
D 158	4013
D 162	4115
D 167	4241
D 170	4310
D 173	4394
D 175	4445
D 177	4500
D 180	4572
D 187	4750
D 195	4953
D 197	5000
D 204	5182
D 205	5209
D 207	5259
D 208	5283
D 210	5334
D 220	5588
D 223	5600
D 225	5659
D 236	5940
D 238	6000
D 240	6039
D 248	6244
D 250	6294
D 255	6424
D 264	6650
D 266	6700
D 270	6804
D 280	7050
D 282	7100
D 285	7184
D 295	7425
D 298	7500
D 300	7565
D 314	7924

D 315	7950
D 316	7974
D 326	8224
D 330	8329
D 345	8709
D 354	8940
D 360	9090
D 374	9445
D 390	9849
D 394	10000
D 420	10624
D 441	11200
D 480	12139
D 510	12897
D 540	13659
D 600	15184

SECTION SPZ

CODE	EXTERNAL LENGTH LE (mm)
EXTRA AND OLEOSTATIC GOLD	
SPZ 487	500
SPZ 512	525
SPZ 562	575
SPZ 587	600
SPZ 607	620
SPZ 612	625
SPZ 630	643
SPZ 637	650
SPZ 662	675
SPZ 670	683
SPZ 687	700
SPZ 710	723
SPZ 722	735
SPZ 737	750
SPZ 750	763
SPZ 762	775
SPZ 772	785
SPZ 787	800
SPZ 800	813
SPZ 812	825
SPZ 825	838
SPZ 837	850
SPZ 850	863
SPZ 862	875
SPZ 875	888
SPZ 887	900
SPZ 900	913
SPZ 912	925
SPZ 922	935
SPZ 925	938
SPZ 937	950
SPZ 950	963
SPZ 962	975
SPZ 975	988
SPZ 987	1000
SPZ 1000	1013
SPZ 1010	1023
SPZ 1012	1025
SPZ 1024	1037
SPZ 1037	1050
SPZ 1047	1060
SPZ 1060	1073
SPZ 1077	1090
SPZ 1087	1100
SPZ 1112	1125
SPZ 1120	1133
SPZ 1137	1150
SPZ 1140	1153
SPZ 1147	1160
SPZ 1150	1163
SPZ 1162	1175
SPZ 1180	1193

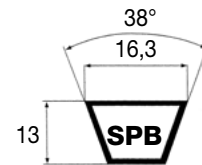


SECTION E*

CODE	INTERNAL LENGTH LI (mm)
OLEOSTATIC GOLD	
E 180	4575
E 197	5000
E 210	5335
E 220	5600
E 226	5660
E 240	6015
E 248	6220
E 255	6400
E 270	6780
E 280	7100
E 285	7160
E 295	7500
E 300	7540
E 316	7950
E 330	8305
E 345	8685
E 354	9000
E 360	9065
E 394	9930
E 420	10600
E 441	11200
E 480	12115
E 492	12500
E 540	13635
E 600	15160

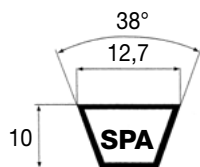
* Available only in Oleostatic Gold version

EXTRA / OLEOSTATIC GOLD BELTS



SPZ 1187	1200
SPZ 1200	1213
SPZ 1202	1215
SPZ 1212	1225
SPZ 1237	1250
SPZ 1250	1263
SPZ 1262	1275
SPZ 1270	1283
SPZ 1287	1300
SPZ 1312	1325
SPZ 1320	1333
SPZ 1337	1350
SPZ 1340	1353
SPZ 1347	1360
SPZ 1362	1375
SPZ 1387	1400
SPZ 1400	1413
SPZ 1412	1425
SPZ 1420	1433
SPZ 1437	1450
SPZ 1462	1475
SPZ 1470	1483
SPZ 1487	1500
SPZ 1500	1513
SPZ 1512	1525
SPZ 1520	1533
SPZ 1537	1550
SPZ 1562	1575
SPZ 1587	1600
SPZ 1600	1613
SPZ 1612	1625
SPZ 1637	1650
SPZ 1650	1663
SPZ 1662	1675
SPZ 1687	1700
SPZ 1700	1713
SPZ 1737	1750
SPZ 1750	1763
SPZ 1762	1775
SPZ 1787	1800
SPZ 1800	1813
SPZ 1812	1825
SPZ 1837	1850
SPZ 1850	1863
SPZ 1862	1875
SPZ 1887	1900
SPZ 1900	1913
SPZ 1937	1950
SPZ 1962	1975
SPZ 1987	2000
SPZ 2000	2013
SPZ 2019	2032
SPZ 2030	2043
SPZ 2037	2050
SPZ 2062	2075
SPZ 2087	2100
SPZ 2120	2133
SPZ 2137	2150
SPZ 2150	2163

SPZ 2160	2173
SPZ 2187	2200
SPZ 2240	2253
SPZ 2262	2275
SPZ 2287	2300
SPZ 2360	2373
SPZ 2410	2423
SPZ 2437	2450
SPZ 2487	2500
SPZ 2500	2513
SPZ 2540	2553
SPZ 2650	2663
SPZ 2690	2703
SPZ 2800	2813
SPZ 2840	2853
SPZ 3000	3013
SPZ 3150	3163
SPZ 3350	3363
SPZ 3550	3563



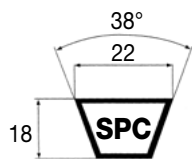
SECTION SPA	
CODE	EXTERNAL LENGTH LE (mm)
EXTRA AND OLEOSTATIC GOLD	
SPA 657	675
SPA 707	725
SPA 732	750
SPA 757	775
SPA 782	800
SPA 800	818
SPA 807	825
SPA 832	850
SPA 850	868
SPA 857	875
SPA 882	900
SPA 900	918
SPA 907	925
SPA 925	943
SPA 932	950
SPA 950	968
SPA 957	975
SPA 967	985
SPA 982	1000
SPA 1000	1018
SPA 1007	1025
SPA 1032	1050
SPA 1060	1078
SPA 1082	1100

SPA 1107	1125
SPA 1120	1138
SPA 1132	1150
SPA 1150	1168
SPA 1157	1175
SPA 1180	1198
SPA 1207	1225
SPA 1232	1250
SPA 1250	1268
SPA 1257	1275
SPA 1272	1290
SPA 1282	1300
SPA 1307	1325
SPA 1320	1338
SPA 1332	1350
SPA 1357	1375
SPA 1382	1400
SPA 1400	1418
SPA 1407	1425
SPA 1425	1443
SPA 1432	1450
SPA 1450	1468
SPA 1457	1475
SPA 1482	1500
SPA 1500	1518
SPA 1507	1525
SPA 1532	1550
SPA 1550	1568
SPA 1557	1575
SPA 1582	1600
SPA 1600	1618
SPA 1607	1625
SPA 1632	1650
SPA 1657	1675
SPA 1682	1700
SPA 1700	1718
SPA 1707	1725
SPA 1732	1750
SPA 1750	1768
SPA 1757	1775
SPA 1782	1800
SPA 1800	1818
SPA 1807	1825
SPA 1832	1850
SPA 1857	1875
SPA 1882	1900
SPA 1900	1918
SPA 1907	1925
SPA 1925	1943
SPA 1932	1950
SPA 1950	1968
SPA 1957	1975
SPA 1982	2000
SPA 2000	2018
SPA 2032	2050
SPA 2057	2075
SPA 2082	2100
SPA 2120	2138
SPA 2132	2150

SPA 2182	2200
SPA 2207	2225
SPA 2232	2250
SPA 2240	2258
SPA 2282	2300
SPA 2300	2318
SPA 2307	2325
SPA 2332	2350
SPA 2360	2378
SPA 2382	2400
SPA 2432	2450
SPA 2482	2500
SPA 2500	2518
SPA 2532	2550
SPA 2582	2600
SPA 2607	2625
SPA 2632	2650
SPA 2650	2668
SPA 2682	2700
SPA 2732	2750
SPA 2782	2800
SPA 2800	2818
SPA 2832	2850
SPA 2847	2865
SPA 2882	2900
SPA 2900	2918
SPA 2932	2950
SPA 2982	3000
SPA 3000	3018
SPA 3032	3050
SPA 3082	3100
SPA 3150	3168
SPA 3182	3200
SPA 3250	3268
SPA 3282	3300
SPA 3350	3368
SPA 3382	3400
SPA 3550	3568
SPA 3650	3668
SPA 3750	3768
SPA 4000	4018
SPA 4250	4268
SPA 4500	4518
SPA 4750	4768

SECTION SPB	
CODE	EXTERNAL LENGTH LE (mm)
EXTRA AND OLEOSTATIC GOLD	
SPB 1250	1272
SPB 1320	1342
SPB 1400	1422
SPB 1410	1432
SPB 1450	1472
SPB 1500	1522
SPB 1600	1622
SPB 1650	1672
SPB 1700	1722
SPB 1750	1772
SPB 1800	1822
SPB 1850	1872
SPB 1860	1882
SPB 1900	1922
SPB 1950	1972
SPB 2000	2022
SPB 2020	2042
SPB 2060	2082
SPB 2098	2120
SPB 2120	2142
SPB 2150	2172
SPB 2180	2202
SPB 2240	2262
SPB 2264	2286
SPB 2280	2302
SPB 2300	2322
SPB 2360	2382
SPB 2391	2413
SPB 2400	2422
SPB 2410	2432
SPB 2430	2452
SPB 2450	2472
SPB 2500	2522
SPB 2530	2552
SPB 2580	2602
SPB 2600	2622
SPB 2650	2672
SPB 2680	2702
SPB 2720	2742
SPB 2800	2822
SPB 2840	2862
SPB 2850	2872
SPB 2900	2922
SPB 2950	2972
SPB 3000	3022
SPB 3070	3092
SPB 3150	3172
SPB 3170	3192
SPB 3250	3272
SPB 3320	3342
SPB 3350	3372
SPB 3450	3472

EXTRA / OLEOSTATIC GOLD BELTS

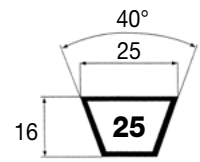
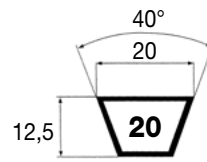
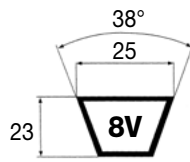
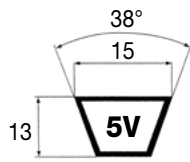
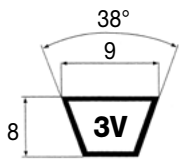


SPB 3550	3572
SPB 3650	3672
SPB 3750	3772
SPB 3800	3822
SPB 4000	4022
SPB 4050	4072
SPB 4250	4272
SPB 4300	4322
SPB 4500	4522
SPB 4560	4582
SPB 4750	4772
SPB 4820	4842
SPB 5000	5022
SPB 5070	5092
SPB 5300	5322
SPB 5600	5622
SPB 6000	6022
SPB 6300	6322
SPB 6700	6722
SPB 7100	7122
SPB 7500	7522
SPB 8000	8022

SECTION SPC

CODE	EXTERNAL LENGTH LE (mm)
EXTRA AND OLEOSTATIC GOLD	
SPC 2000	2030
SPC 2120	2150
SPC 2240	2270
SPC 2360	2390
SPC 2500	2530
SPC 2650	2680
SPC 2800	2830
SPC 3000	3030
SPC 3150	3180
SPC 3350	3380
SPC 3550	3580
SPC3750	3780
SPC 4000	4030
SPC 4250	4280
SPC 4400	4430
SPC 4500	4530
SPC 4750	4780
SPC 5000	5030
SPC 5300	5330
SPC 5600	5630
SPC 6000	6030
SPC 6300	6330
SPC 6700	6730
SPC 7100	7130
SPC 7500	7530
SPC 8000	8030
SPC 8500	8530
SPC 9000	9030
SPC 9500	9530
SPC 10000	10030
SPC 10600	10630
SPC 11200	11230
SPC 11800	11830
SPC 12000	12030
SPC 12500	12530

OLEOSTATIC BELTS



SECTION 3V

CODE	EXTERNAL LENGTH LE (mm)
OLEOSTATIC	
3V 250	635
3V 265	675
3V 280	710
3V 300	760
3V 315	800
3V 335	850
3V 355	900
3V 375	955
3V 400	1015
3V 425	1080
3V 450	1145
3V 475	1205
3V 500	1270
3V 530	1345
3V 560	1420
3V 600	1525
3V 630	1600
3V 670	1700
3V 710	1805
3V 750	1905
3V 800	2030
3V 850	2160
3V 900	2285
3V 950	2415
3V 1000	2540
3V 1060	2690
3V 1120	2845
3V 1180	2995
3V 1250	3175
3V 1320	3355
3V 1400	3555
3V 1500	3810

SECTION 5V

CODE	EXTERNAL LENGTH LE (mm)
OLEOSTATIC	
5V 500	1270
5V 530	1345
5V 560	1420
5V 600	1525
5V 630	1600
5V 670	1700
5V 710	1800
5V 750	1900
5V 800	2030
5V 850	2160
5V 900	2290
5V 950	2410
5V 1000	2540
5V 1060	2690
5V 1120	2840
5V 1180	3000
5V 1250	3180
5V 1320	3350
5V 1400	3550
5V 1500	3810
5V 1600	4060
5V 1700	4320
5V 1800	4570
5V 1900	4830
5V 2000	5080
5V 2120	5380
5V 2240	5690
5V 2360	6000
5V 2500	6350
5V 2650	6730
5V 2800	7100
5V 3000	7620
5V 3150	8000
5V 3350	8500
5V 3550	9000

SECTION 8V

CODE	EXTERNAL LENGTH LE (mm)
OLEOSTATIC	
8V 1000	2540
8V 1060	2690
8V 1120	2840
8V 1180	3000
8V 1250	3180
8V 1320	3350
8V 1400	3550
8V 1500	3810
8V 1600	4060
8V 1700	4320
8V 1800	4570
8V 1900	4830
8V 2000	5080
8V 2120	5380
8V 2240	5690
8V 2360	6000
8V 2500	6350
8V 2650	6730
8V 2800	7100
8V 3000	7620
8V 3150	8000
8V 3350	8500
8V 3550	9000
8V 3750	9500
8V 4000	10160
8V 4250	10800
8V 4500	11430
8V 4750	12060
8V 5000	12700

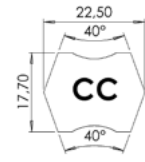
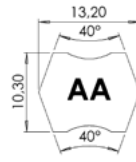
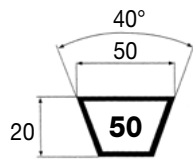
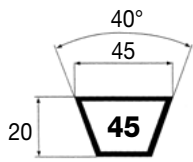
SECTION 20

CODE	INTERNAL LENGTH LI (mm)
OLEOSTATIC	
20	1800
20	1875
20	1900
20	1925
20	1950
20	2000
20	2050
20	2120
20	2200
20	2240
20	2240
20	2360
20	2500
20	2600
20	2650
20	2800
20	3000
20	3150
20	3250
20	3350
20	3450
20	3550
20	3650
20	3750
20	4000
20	4250
20	4500
20	4750
20	5000
20	5300
20	5600
20	6000

SECTION 25

CODE	INTERNAL LENGTH LI (mm)
OLEOSTATIC	
25	1800
25	1900
25	1950
25	2000
25	2050
25	2120
25	2200
25	2240
25	2325
25	2360
25	2450
25	2500
25	2650
25	2700
25	2800
25	2950
25	3000
25	3150
25	3300
25	3350
25	3550
25	3750
25	3950
25	4000
25	4250
25	4450
25	4500
25	4750
25	5000
25	5300
25	5600
25	5700
25	6000
25	6300
25	6500
25	6700
25	7100
25	7500
25	8000
25	8500
25	9000
25	9500
25	10000

OLEOSTATIC BELTS / ESAFLEX



SECTION 45	
CODE	INTERNAL LENGTH LI (mm)
OLEOSTATIC	
45	2000
45	2300
45	2500
45	2650
45	2750
45	2850
45	3000
45	3150
45	3250
45	3300
45	3500
45	3750
45	4000

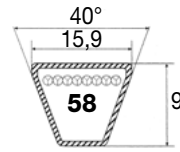
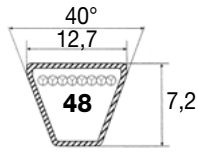
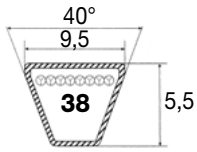
SECTION 50	
CODE	INTERNAL LENGTH LI (mm)
OLEOSTATIC	
50	2000
50	2050
50	2150
50	2300
50	2500
50	2650
50	2750
50	2850
50	2870
50	3000
50	3150
50	3250
50	3300
50	3500
50	3670
50	3750
50	3950
50	4000

SECTION AA	
CODE	NOMINAL LENGTH (mm)
ESAFLEX	
AA 51	1334
AA 60	1564
AA 61	1584
AA 68	1764
AA 71	1839
AA 75	1939
AA 77	1994
AA 80	2069
AA 81	2094
AA 85	2194
AA 86	2224
AA 88	2274
AA 90	2324
AA 91	2349
AA 95	2449
AA 96	2474
AA 105	2704
AA 108	2784
AA 112	2879
AA 116	2984
AA 120	3084
AA 128	3289
AA 147	3769
AA 148	3794
AA 152	3899
AA 159	4074
AA 163	4179

SECTION BB	
CODE	NOMINAL LENGTH (mm)
ESAFLEX	
BB 50	1323
BB 60	1578
BB 68	1783
BB 71	1858
BB 75	1958
BB 81	2108
BB 85	2213
BB 90	2338
BB 92	2393
BB 94	2443
BB 97	2518
BB 105	2723
BB 112	2898
BB 118	3053
BB 120	3103
BB 121	3128
BB 122	3153
BB 128	3308
BB 135	3483
BB 144	3713
BB 154	3968
BB 155	3993
BB 158	4068
BB 162	4168
BB 173	4448
BB 174	4473
BB 180	4628
BB 184	4728
BB 190	4878
BB 195	5008
BB 210	5388
BB 240	6151
BB 270	6913

SECTION CC	
CODE	NOMINAL LENGTH (mm)
ESAFLEX	
CC 81	2130
CC 85	2235
CC 86	2260
CC 96	2515
CC 105	2740
CC 112	2920
CC 120	3120
CC 128	3325
CC 144	3730
CC 153	3960
CC 158	4090
CC 162	4190
CC 173	4470
CC 180	4650
CC 193	4980
CC 195	5030
CC 210	5410
CC 234	6019
CC 240	6171
CC 270	6933
CC 300	7695
CC 330	8457
CC 360	9219
CC 390	9981
CC 420	10743

XDV2



SECTION XDV2-38

CODE	EXTERNAL LENGTH LE (inches)
XDV 38/150	15
XDV 38/160	16
XDV 38/170	17
XDV 38/180	18
XDV 38/190	19
XDV 38/200	20
XDV 38/210	21
XDV 38/220	22
XDV 38/230	23
XDV 38/240	24
XDV 38/250	25
XDV 38/260	26
XDV 38/270	27
XDV 38/280	28
XDV 38/290	29
XDV 38/300	30
XDV 38/310	31
XDV 38/320	32
XDV 38/330	33
XDV 38/340	34
XDV 38/350	35
XDV 38/360	36
XDV 38/370	37
XDV 38/380	38
XDV 38/390	39
XDV 38/400	40
XDV 38/410	41
XDV 38/420	42
XDV 38/430	43
XDV 38/440	44
XDV 38/450	45
XDV 38/460	46
XDV 38/470	47
XDV 38/480	48
XDV 38/490	49
XDV 38/500	50
XDV 38/510	51
XDV 38/520	52
XDV 38/530	53
XDV 38/540	54
XDV 38/550	55
XDV 38/560	56
XDV 38/570	57
XDV 38/580	58
XDV 38/590	59
XDV 38/600	60
XDV 38/610	61
XDV 38/620	62
XDV 38/630	63
XDV 38/690	69
XDV 38/710	71
XDV 38/740	74
XDV 38/750	75

SECTION XDV2-48

CODE	EXTERNAL LENGTH LE (inches)
XDV 48/170	17
XDV 48/180	18
XDV 48/190	19
XDV 48/200	20
XDV 48/210	21
XDV 48/220	22
XDV 48/230	23
XDV 48/240	24
XDV 48/250	25
XDV 48/260	26
XDV 48/270	27
XDV 48/280	28
XDV 48/290	29
XDV 48/300	30
XDV 48/310	31
XDV 48/320	32
XDV 48/330	33
XDV 48/340	34
XDV 48/350	35
XDV 48/360	36
XDV 48/370	37
XDV 48/380	38
XDV 48/390	39
XDV 48/400	40
XDV 48/410	41
XDV 48/420	42
XDV 48/430	43
XDV 48/440	44
XDV 48/450	45
XDV 48/460	46
XDV 48/470	47
XDV 48/480	48
XDV 48/490	49
XDV 48/500	50
XDV 48/510	51
XDV 48/520	52
XDV 48/530	53
XDV 48/540	54
XDV 48/550	55
XDV 48/560	56
XDV 48/570	57
XDV 48/580	58
XDV 48/590	59
XDV 48/600	60
XDV 48/610	61
XDV 48/620	62
XDV 48/630	63
XDV 48/640	64
XDV 48/650	65
XDV 48/660	66
XDV 48/670	67
XDV 48/680	68
XDV 48/690	69

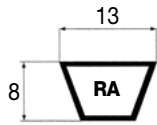
XDV 48/700	70
XDV 48/710	71
XDV 48/720	72
XDV 48/730	73
XDV 48/740	74
XDV 48/750	75
XDV 48/760	76
XDV 48/770	77
XDV 48/780	78
XDV 48/790	79
XDV 48/800	80
XDV 48/810	81
XDV 48/820	82
XDV 48/830	83
XDV 48/840	84
XDV 48/850	85
XDV 48/860	86
XDV 48/870	87
XDV 48/880	88
XDV 48/890	89
XDV 48/900	90
XDV 48/910	91
XDV 48/920	92
XDV 48/930	93
XDV 48/940	94
XDV 48/950	95
XDV 48/960	96
XDV 48/970	97
XDV 48/980	98
XDV 48/990	99
XDV 48/1000	100
XDV 48/1050	105
XDV 48/1070	107
XDV 48/1140	114
XDV 48/1170	117

SECTION XDV2-58

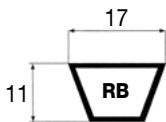
CODE	EXTERNAL LENGTH LE (inches)
XDV 58/230	23
XDV 58/240	24
XDV 58/250	25
XDV 58/260	26
XDV 58/270	27
XDV 58/280	28
XDV 58/290	29
XDV 58/300	30
XDV 58/310	31
XDV 58/320	32
XDV 58/330	33
XDV 58/340	34
XDV 58/350	35
XDV 58/360	36
XDV 58/370	37
XDV 58/380	38
XDV 58/390	39
XDV 58/400	40
XDV 58/410	41
XDV 58/420	42
XDV 58/430	43
XDV 58/440	44
XDV 58/450	45
XDV 58/460	46
XDV 58/470	47
XDV 58/480	48
XDV 58/490	49
XDV 58/500	50
XDV 58/510	51
XDV 58/520	52
XDV 58/530	53
XDV 58/540	54
XDV 58/550	55
XDV 58/560	56
XDV 58/570	57
XDV 58/580	58
XDV 58/590	59
XDV 58/600	60
XDV 58/610	61
XDV 58/620	62
XDV 58/630	63
XDV 58/640	64
XDV 58/650	65
XDV 58/660	66
XDV 58/670	67
XDV 58/680	68
XDV 58/690	69
XDV 58/700	70
XDV 58/710	71
XDV 58/720	72
XDV 58/730	73
XDV 58/740	74
XDV 58/750	75

XDV 58/760	76
XDV 58/770	77
XDV 58/780	78
XDV 58/790	79
XDV 58/800	80
XDV 58/810	81
XDV 58/820	82
XDV 58/830	83
XDV 58/840	84
XDV 58/850	85
XDV 58/860	86
XDV 58/870	87
XDV 58/880	88
XDV 58/890	89
XDV 58/900	90
XDV 58/910	91
XDV 58/920	92
XDV 58/930	93
XDV 58/940	94
XDV 58/950	95
XDV 58/960	96
XDV 58/970	97
XDV 58/980	98
XDV 58/990	99
XDV 58/1000	100
XDV 58/1030	103
XDV 58/1080	108

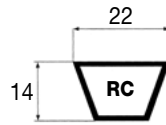
PLURIBAND



SECTION RA	
CODE	INTERNAL LENGTH LI (mm)
RA 47	1200
RA 51	1300
RA 56	1422
RA 57	1450
RA 59	1500
RA 64	1625
RA 67	1700
RA 71	1800
RA 75	1900
RA 79	2000
RA 88	2240
RA 98	2500
RA 100	2540
RA 104	2650
RA 112	2845
RA 120	3048
RA 128	3250
RA 144	3658
RA 158	4000
RA 167	4250
RA 187	4750
RA 197	5000
RA 210	5334
RA 217	5477

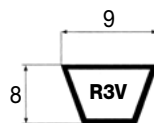


SECTION RB	
CODE	INTERNAL LENGTH LI (mm)
RB 70	1778
RB 71	1803
RB 72	1829
RB 73	1854
RB 74	1880
RB 75	1905
RB 76	1930
RB 78	1981
RB 79	2007
RB 80	2032
RB 81	2057
RB 82	2083
RB 83	2108
RB 84	2134
RB 85	2159
RB 86	2184
RB 87	2210
RB 88	2235
RB 89	2261



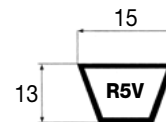
RB 90	2286
RB 91	2311
RB 92	2337
RB 93	2362
RB 94	2388
RB 95	2413
RB 96	2438
RB 97	2464
RB 98	2489
RB 99	2515
RB 100	2540
RB 102	2591
RB 104	2642
RB 105	2667
RB 106	2692
RB 107	2718
RB 108	2743
RB 110	2794
RB 112	2845
RB 114	2896
RB 115	2921
RB 116	2946
RB 118	2997
RB 120	3048
RB 124	3150
RB 127	3226
RB 128	3251
RB 130	3302
RB 131	3327
RB 132	3353
RB 133	3378
RB 134	3404
RB 135	3429
RB 136	3454
RB 140	3556
RB 144	3658
RB 147	3734
RB 148	3759
RB 151	3835
RB 152	3861
RB 154	3912
RB 157	3988
RB 158	4013
RB 161	4089
RB 162	4115
RB 163	4140
RB 165	4191
RB 167	4242
RB 168	4267
RB 173	4394
RB 175	4445
RB 177	4496
RB 180	4572
RB 186	4724
RB 188	4775
RB 192	4877
RB 195	4953
RB 197	5004

SECTION RC	
CODE	INTERNAL LENGTH LI (mm)
RC 98	2489
RC 99	2515
RC 100	2540
RC 101	2565
RC 102	2591
RC 104	2642
RC 105	2667
RC 106	2692
RC 108	2743
RC 110	2794
RC 112	2845
RC 115	2921
RC 118	2997
RC 120	3048
RC 124	3150
RC 128	3251
RC 130	3302
RC 134	3404
RC 136	3454
RC 140	3556
RC 142	3607
RC 144	3658
RC 148	3759
RC 153	3886
RC 158	4013
RC 160	4064
RC 165	4191
RC 166	4216
RC 168	4267
RC 173	4394
RC 180	4572
RC 195	4953
RC 210	5334



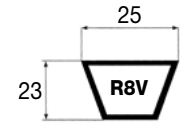
SECTION R3V	
CODE	NOMINAL EXTERNAL LENGTH (mm)
R3V 335	850
R3V 355	900
R3V 375	950
R3V 400	1015
R3V 425	1080
R3V 450	1145
R3V 475	1205
R3V 500	1270

R3V 530	1345
R3V 560	1420
R3V 600	1525
R3V 630	1600
R3V 670	1700
R3V 710	1800
R3V 750	1900
R3V 800	2030
R3V 850	2160
R3V 900	2290
R3V 950	2410
R3V 1000	2540
R3V 1060	2690
R3V 1120	2840
R3V 1180	3000
R3V 1250	3180
R3V 1320	3350
R3V 1400	3550



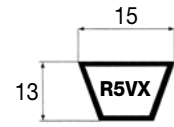
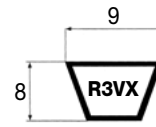
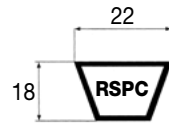
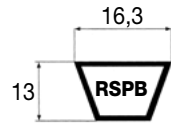
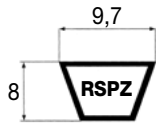
SECTION R5V	
CODE	NOMINAL EXTERNAL LENGTH (mm)
R5V 500	1270
R5V 530	1345
R5V 560	1420
R5V 600	1525
R5V 630	1600
R5V 670	1700
R5V 710	1800
R5V 750	1900
R5V 800	2030
R5V 850	2160
R5V 900	2290
R5V 950	2410
R5V 1000	2540
R5V 1120	2840
R5V 1180	3000
R5V 1250	3180
R5V 1320	3350
R5V 1400	3550
R5V 1500	3810
R5V 1600	4060
R5V 1700	4320
R5V 1800	4570
R5V 1900	4830
R5V 2000	5080
R5V 2120	5380
R5V 2240	5690
R5V 2360	6000
R5V 2500	6350
R5V 2650	6730

R5V 2800	7100
R5V 3000	7620
R5V 3150	8000
R5V 3350	8500
R5V 3550	9000



SECTION R8V	
CODE	NOMINAL EXTERNAL LENGTH (mm)
R8V 1000	2540
R8V 1060	2690
R8V 1120	2840
R8V 1180	3000
R8V 1250	3180
R8V 1320	3350
R8V 1400	3550
R8V 1500	3810
R8V 1600	4060
R8V 1700	4320
R8V 1800	4570
R8V 1900	4830
R8V 2000	5080
R8V 2120	5380
R8V 2240	5690
R8V 2360	6000
R8V 2500	6350
R8V 2650	6730
R8V 2800	7100
R8V 3000	7620
R8V 3150	8000
R8V 3350	8500
R8V 3550	9000
R8V 3750	9500
R8V 4000	10160
R8V 4250	10800
R8V 4500	11430
R8V 4750	12060
R8V 5000	12700
R8V 5600	14200
R8V 6000	15250

PLURIBAND



SECTION RSPZ

CODE	PITCH LENGTH LW (mm)
RSPZ 1400	1400
RSPZ 1500	1500
RSPZ 1600	1600
RSPZ 1700	1700
RSPZ 1800	1800
RSPZ 1900	1900
RSPZ 2000	2000
RSPZ 2120	2120
RSPZ 2240	2240
RSPZ 2360	2360
RSPZ 2500	2500
RSPZ 2650	2650
RSPZ 2800	2800
RSPZ 3000	3000
RSPZ 3150	3150
RSPZ 3350	3350
RSPZ 3550	3550

SECTION RSPB

CODE	PITCH LENGTH LW (mm)
RSPB 2000	2000
RSPB 2120	2120
RSPB 2240	2240
RSPB 2360	2360
RSPB 2500	2500
RSPB 2650	2650
RSPB 2800	2800
RSPB 3000	3000
RSPB 3150	3150
RSPB 3350	3350
RSPB 3750	3750
RSPB 4000	4000
RSPB 4250	4250
RSPB 4500	4500
RSPB 4750	4750
RSPB 5000	5000
RSPB 5300	5300
RSPB 5600	5600
RSPB 6000	6000
RSPB 6300	6300
RSPB 6700	6700
RSPB 7100	7100
RSPB 7500	7500
RSPB 8000	8000

SECTION RSPC

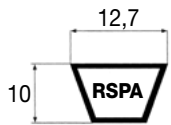
CODE	PITCH LENGTH LW (mm)
RSPC 3000	3000
RSPC 3150	3150
RSPC 3350	3350
RSPC 3550	3550
RSPC 3750	3750
RSPC 4000	4000
RSPC 4250	4250
RSPC 4500	4500
RSPC 4750	4750
RSPC 5000	5000
RSPC 5300	5300
RSPC 5600	5600
RSPC 6000	6000
RSPC 6300	6300
RSPC 6700	6700
RSPC 7100	7100
RSPC 7500	7500
RSPC 8000	8000
RSPC 8500	8500
RSPC 9000	9000
RSPC 9500	9500
RSPC 10000	10000
RSPC 10600	10600
RSPC 11200	11200
RSPC 11800	11800
RSPC 12500	12500

SECTION R3VX

CODE	NOMINAL EXTERNAL LENGTH (mm)
R3VX 250	630
R3VX 265	670
R3VX 280	710
R3VX 300	760
R3VX 315	800
R3VX 335	850
R3VX 355	900
R3VX 375	950
R3VX 400	1015
R3VX 425	1080
R3VX 450	1145
R3VX 475	1205
R3VX 500	1270
R3VX 530	1345
R3VX 560	1420
R3VX 600	1525
R3VX 630	1600
R3VX 670	1700
R3VX 710	1800
R3VX 750	1900
R3VX 800	2030
R3VX 850	2160
R3VX 900	2290
R3VX 950	2410
R3VX 1000	2540
R3VX 1060	2690
R3VX 1120	2840
R3VX 1180	3000
R3VX 1250	3180
R3VX 1320	3350
R3VX 1400	3550

SECTION R5VX

CODE	NOMINAL EXTERNAL LENGTH (mm)
R5VX 500	1270
R5VX 530	1345
R5VX 560	1420
R5VX 600	1525
R5VX 630	1600
R5VX 670	1700
R5VX 710	1800
R5VX 800	2030
R5VX 850	2160
R5VX 900	2290
R5VX 950	2410
R5VX 1000	2540
R5VX 1060	2690
R5VX 1120	2840
R5VX 1180	3000
R5VX 1250	3180
R5VX 1320	3350
R5VX 1400	3550
R5VX 1500	3810
R5VX 1600	4060
R5VX 1700	4320
R5VX 1800	4570
R5VX 1900	4830
R5VX 2000	5080



SECTION RSPA

CODE	PITCH LENGTH LW (mm)
RSPA 1500	1500
RSPA 1600	1600
RSPA 1700	1700
RSPA 1800	1800
RSPA 1900	1900
RSPA 2000	2000
RSPA 2120	2120
RSPA 2240	2240
RSPA 2360	2360
RSPA 2500	2500
RSPA 2650	2650
RSPA 2800	2800
RSPA 3000	3000
RSPA 3150	3150
RSPA 3350	3350
RSPA 3550	3550
RSPA 3750	3750
RSPA 4000	4000
RSPA 4250	4250
RSPA 4500	4500



RUBBER RAW EDGE BELTS

LINEA X, LINEA GOLD, VARISECT

LINEA X

These belts have been specifically developed to run where small pulley diameters and high transmission ratios put a limit to the use of wrapped belts of the same section.

Compared to wrapped belts, Linea X family has important improvements, like specific compounds and special production technology.

In particular the transverse orientation of the fibers improves the cord support capacity of the body section and reinforces its transverse rigidity, while maintaining (due to the cogged profile and the precision-ground sidewalls), the highest longitudinal flexibility and running stability.

These characteristics guarantee an excellent structure with advantages such as: high transmission ratios, improved grip and resistance to continuous bending.



LINEA GOLD

The NEW generation of raw edge belts.

New materials, advanced design features and an innovative production process has led Megadyne to develop a new generation of raw edge V-belt drives that outperform, in a wide range of industrial applications, all the previous drives equipped with standard raw edge belts, granting large cost advantages for the end users and greater design flexibility for the engineers.

The belt has a narrow cross section and a raw edge construction, based on a new EPDM rubber compound which can withstand chemically aggressive environments, ageing, ozone, UV and heat.

Special constructions and laminated belts are available on request.



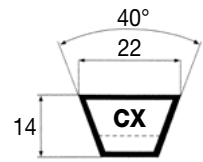
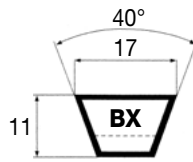
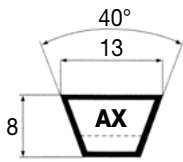
MEGAMATCH ^{MEGA}MATCH

All Linea Gold and Linea X V-belts carrying the MEGAMATCH logo are made and supplied according to the matching set tolerances and limits indicated by the relevant international standards (ISO 4184, ARPM, etc).

VARISECT

It means Variable Speed V-belt. Designed for variable speed transmissions, to obtain a wide range of driven speeds, Varisect resists fatigue and shock, providing excellent belt stability.

LINEA GOLD



SECTION AX	
CODE	EXTERNAL LENGTH LE (mm)
AX 21	585
AX 22	610
AX 23	635
AX 24	665
AX 25	690
AX 26	710
AX 27	750
AX 28	765
AX 29	800
AX 30	815
AX 31	850
AX 32	865
AX 33	900
AX 34	915
AX 35	950
AX 36	965
AX 37	1000
AX 38	1020
AX 39	1045
AX 40	1075
AX 41	1095
AX 42	1120
AX 43	1150
AX 44	1170
AX 45	1195
AX 46	1230
AX 47	1245
AX 48	1270
AX 49	1300
AX 50	1325
AX 51	1350
AX 52	1375
AX 53	1400
AX 54	1425
AX 55	1450
AX 56	1475
AX 57	1500
AX 58	1525
AX 59	1550
AX 60	1585
AX 61	1600
AX 62	1630
AX 63	1655
AX 64	1680
AX 65	1710
AX 66	1730
AX 67	1760
AX 68	1790
AX 69	1810
AX 70	1830
AX 71	1865
AX 72	1890
AX 73	1905
AX 74	1935

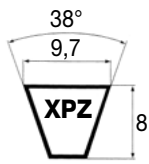
AX 75	1965
AX 76	1985
AX 77	2010
AX 78	2030
AX 79	2060
AX 80	2080
AX 81	2120
AX 82	2140
AX 83	2160
AX 84	2190
AX 85	2220
AX 86	2240
AX 87	2260
AX 88	2290
AX 89	2310
AX 90	2350
AX 91	2360
AX 92	2390
AX 93	2420
AX 94	2440
AX 95	2470
AX 96	2500
AX 97	2520
AX 98	2540
AX 100	2600
AX 103	2670
AX 105	2730
AX 110	2850
AX 112	2910
AX 120	3110
AX 128	3310
AX 136	3510
AX 144	3710
AX 158	4070
AX 173	4450
AX 180	4620

SECTION BX	
CODE	EXTERNAL LENGTH LE (mm)
BX 28	785
BX 32	885
BX 34	935
BX 35	960
BX 36	990
BX 38	1040
BX 40	1090
BX 41	1120
BX 42	1140
BX 43	1165
BX 44	1190
BX 45	1215
BX 46	1250
BX 47	1265
BX 48	1295
BX 49	1320
BX 50	1345
BX 51	1370
BX 52	1400
BX 53	1420
BX 54	1445
BX 55	1470
BX 56	1500
BX 57	1520
BX 58	1545
BX 59	1570
BX 60	1600
BX 61	1625
BX 62	1650
BX 63	1675
BX 64	1700
BX 65	1725
BX 66	1750
BX 67	1775
BX 68	1800
BX 69	1825
BX 70	1850
BX 71	1875
BX 72	1900
BX 73	1930
BX 74	1955
BX 75	1980
BX 76	2000
BX 77	2030
BX 78	2050
BX 79	2080
BX 80	2110
BX 81	2130
BX 82	2160
BX 83	2180
BX 84	2210
BX 85	2240
BX 86	2260
BX 87	2280

BX 88	2310
BX 89	2330
BX 90	2360
BX 91	2390
BX 92	2410
BX 93	2440
BX 94	2460
BX 95	2500
BX 96	2510
BX 97	2540
BX 98	2560
BX 99	2590
BX 100	2620
BX 103	2690
BX 105	2740
BX 106	2770
BX 108	2820
BX 112	2920
BX 113	2940
BX 115	2990
BX 116	3020
BX 120	3130
BX 123	3200
BX 124	3220
BX 126	3270
BX 128	3330
BX 133	3450
BX 136	3530
BX 140	3630
BX 144	3740
BX 148	3830
BX 150	3880
BX 154	3990
BX 158	4090
BX 162	4200
BX 173	4480
BX180	4650
BX191	4930
BX195	5040

SECTION CX	
CODE	EXTERNAL LENGTH LE (mm)
CX 51	1400
CX 55	1500
CX 60	1630
CX 68	1830
CX 72	1935
CX 75	2000
CX 78	2090
CX 81	2160
CX 85	2270
CX 90	2390
CX 96	2540
CX 100	2650
CX 101	2670
CX 105	2770
CX 109	2870
CX 111	2920
CX 112	2950
CX 115	3030
CX 120	3150
CX 128	3350
CX 136	3550
CX 144	3760
CX 148	3860
CX 150	3920
CX 158	4120
CX 162	4220
CX 173	4500
CX 180	4680

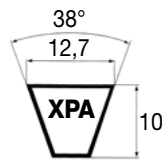
LINEA GOLD / LINEA X



SECTION XPZ	
CODE	EXTERNAL LENGTH (mm)
XPZ512	525
XPZ562	575
XPZ587	600
XPZ607	620
XPZ612	625
XPZ630	643
XPZ637	650
XPZ662	675
XPZ670	683
XPZ687	700
XPZ710	723
XPZ722	735
XPZ730	743
XPZ737	750
XPZ750	763
XPZ762	775
XPZ772	785
XPZ787	800
XPZ800	813
XPZ812	825
XPZ837	850
XPZ850	863
XPZ852	865
XPZ862	875
XPZ875	888
XPZ887	900
XPZ900	913
XPZ912	925
XPZ925	938
XPZ937	950
XPZ940	953
XPZ950	963
XPZ962	975
XPZ975	988
XPZ987	1000
XPZ1000	1013
XPZ1012	1025
XPZ1021	1034
XPZ1024	1037
XPZ1030	1043
XPZ1037	1050
XPZ1047	1060
XPZ1050	1063
XPZ1060	1073
XPZ1062	1075
XPZ1077	1090
XPZ1080	1093
XPZ1087	1100
XPZ1112	1125
XPZ1120	1133
XPZ1137	1150
XPZ1162	1175
XPZ1180	1193
XPZ1187	1200

XPZ1202	1215
XPZ1212	1225
XPZ1237	1250
XPZ1250	1263
XPZ1262	1275
XPZ1270	1283
XPZ1280	1293
XPZ1287	1300
XPZ1312	1325
XPZ1320	1333
XPZ1327	1340
XPZ1337	1350
XPZ1362	1375
XPZ1387	1400
XPZ1400	1413
XPZ1412	1425
XPZ1420	1433
XPZ1437	1450
XPZ1462	1475
XPZ1470	1483
XPZ1487	1500
XPZ1500	1513
XPZ1512	1525
XPZ1520	1533
XPZ1537	1550
XPZ1550	1563
XPZ1562	1575
XPZ1587	1600
XPZ1600	1613
XPZ1612	1625
XPZ1637	1650
XPZ1650	1663
XPZ1662	1675
XPZ1700	1713
XPZ1737	1750
XPZ1750	1763
XPZ1762	1775
XPZ1800	1813
XPZ1812	1825
XPZ1850	1863
XPZ1862	1875
XPZ1887	1900
XPZ1900	1913
XPZ1937	1950
XPZ1950	1963
XPZ2000	2013
XPZ2030	2043
XPZ2037	2050
XPZ2120	2133
XPZ2160	2173
XPZ2240	2253
XPZ2280	2293
XPZ2360	2373
XPZ2410	2423
XPZ2500	2513
XPZ2540	2553
XPZ2650	2663
XPZ2690	2703
XPZ2800	2813

XPZ2840	2853
XPZ3000	3013
XPZ3150	3163
XPZ3170	3183
XPZ3350	3363
XPZ3550	3563

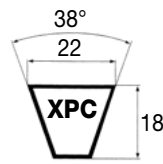
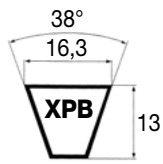


SECTION XPA	
CODE	EXTERNAL LENGTH (mm)
XPA667	685
XPA682	700
XPA732	750
XPA757	775
XPA765	783
XPA782	800
XPA800	818
XPA807	825
XPA832	850
XPA850	868
XPA857	875
XPA882	900
XPA900	918
XPA907	925
XPA925	943
XPA932	950
XPA950	968
XPA957	975
XPA965	983
XPA969	987
XPA982	1000
XPA1000	1018
XPA1007	1025
XPA1032	1050
XPA1057	1075
XPA1060	1078
XPA1082	1100
XPA1107	1125
XPA1120	1138
XPA1132	1150
XPA1140	1158
XPA1150	1168
XPA1157	1175

XPA1162	1180
XPA1180	1198
XPA1182	1200
XPA1207	1225
XPA1215	1233
XPA1232	1250
XPA1250	1268
XPA1257	1275
XPA1272	1290
XPA1282	1300
XPA1307	1325
XPA1320	1338
XPA1332	1350
XPA1357	1375
XPA1367	1385
XPA1382	1400
XPA1400	1418
XPA1407	1425
XPA1420	1438
XPA1432	1450
XPA1450	1468
XPA1457	1475
XPA1482	1500
XPA1500	1518
XPA1507	1525
XPA1532	1550
XPA1557	1575
XPA1582	1600
XPA1600	1618
XPA1607	1625
XPA1632	1650
XPA1650	1668
XPA1657	1675
XPA1682	1700
XPA1700	1718
XPA1732	1750
XPA1750	1768
XPA1757	1775
XPA1782	1800
XPA1800	1818
XPA1832	1850
XPA1850	1868
XPA1882	1900
XPA1900	1918
XPA1932	1950
XPA1950	1968
XPA1957	1975
XPA1982	2000
XPA2000	2018
XPA2032	2050
XPA2057	2075
XPA2082	2100
XPA2120	2138
XPA2160	2178
XPA2182	2200
XPA2240	2258
XPA2282	2300
XPA2300	2318
XPA2360	2378

XPA2432	2450
XPA2482	2500
XPA2500	2518
XPA2532	2550
XPA2582	2600
XPA2607	2625
XPA2632	2650
XPA2650	2668
XPA2682	2700
XPA2732	2750
XPA2782	2800
XPA2800	2818
XPA3000	3018
XPA3150	3168
XPA3350	3368
XPA3550	3568
XPA3750	3768
XPA4000	4018
XPA4250	4268
XPA4500	4518

LINEA GOLD / LINEA X



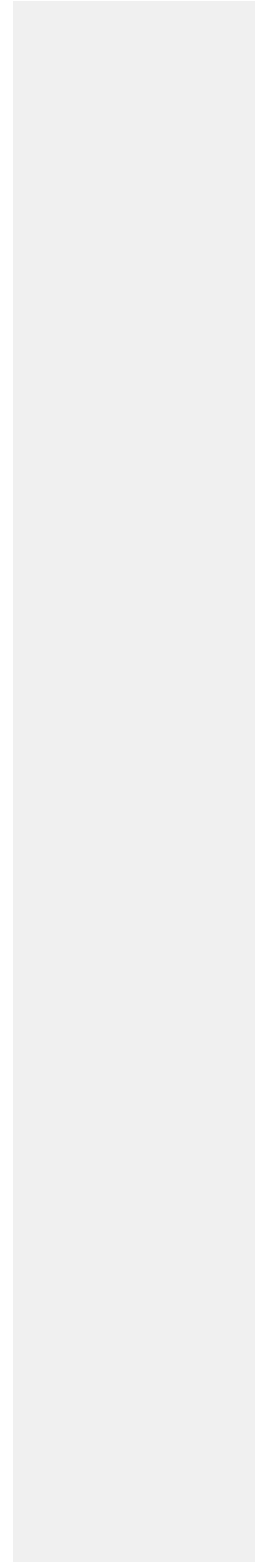
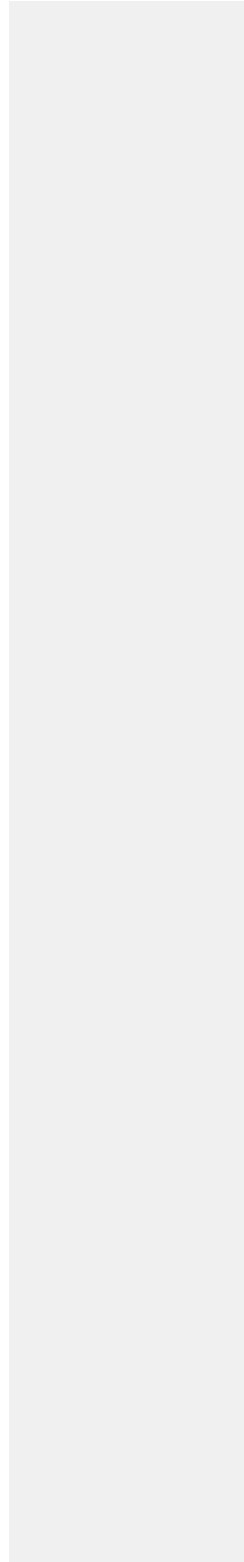
SECTION XPB

CODE	EXTERNAL LENGTH (mm)
XPB1250	1272
XPB1260	1282
XPB1320	1342
XPB1340	1362
XPB1400	1422
XPB1410	1432
XPB1450	1472
XPB1500	1522
XPB1510	1532
XPB1550	1572
XPB1590	1612
XPB1600	1622
XPB1650	1672
XPB1690	1712
XPB1700	1722
XPB1710	1732
XPB1750	1772
XPB1800	1822
XPB1850	1872
XPB1900	1922
XPB1950	1972
XPB1970	1982
XPB2000	2022
XPB2020	2042
XPB2060	2082
XPB2120	2142
XPB2150	2172
XPB2180	2202
XPB2240	2262
XPB2280	2302
XPB2300	2322
XPB2360	2382
XPB2410	2432
XPB2430	2452
XPB2500	2522
XPB2530	2552
XPB2580	2602
XPB2650	2672
XPB2680	2702
XPB2800	2822
XPB2840	2862
XPB2900	2922
XPB2990	3012
XPB3000	3022
XPB3070	3092
XPB3150	3172
XPB3170	3192
XPB3340	3362
XPB3350	3372
XPB3550	3572
XPB3750	3772
XPB3800	3822
XPB4000	4022
XPB4060	4082

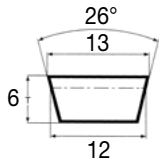
XPB4250	4272
XPB4500	4522
XPB4560	4582
XPB4750	4772
XPB5000	5022

SECTION XPC

CODE	EXTERNAL LENGTH (mm)
XPC2000	2030
XPC2120	2150
XPC2240	2270
XPC2360	2390
XPC2500	2530
XPC2650	2680
XPC2800	2830
XPC3000	3030
XPC3150	3180
XPC3350	3380
XPC3550	3580
XPC3750	3780
XPC4000	4030
XPC4250	4280
XPC4500	4530
XPC4750	4780
XPC5000	5030

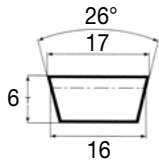


VARISECT



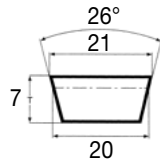
SECTION 13X6

CODE	INTERNAL LENGTH LI (mm)
425	425
500	500
525	525
550	550
650	650
675	675
700	700
725	725
750	750
775	775
900	900



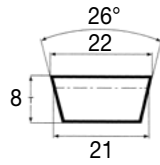
SECTION 17X6 W16

CODE	NOMINAL PITCH LENGTH LD (mm)
W 16P	450
W 16P	500
W 16P	560
W 16P	600
W 16P	630
W 16P	710
W 16P	800
W 16P	900
W 16P	1000



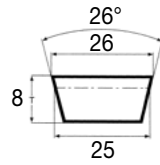
SECTION 21X7 W20

CODE	NOMINAL PITCH LENGTH LD (mm)
W 20P	560
W 20P	630
W 20P	640
W 20P	710
W 20P	800
W 20P	900
W 20P	1000
W 20P	1120
W 20P	1250



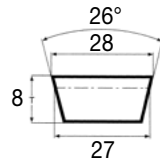
SECTION 22X8

CODE	INTERNAL LENGTH LI (mm)
500	500
525	525
550	550
575	575
600	600
610	610
625	625
650	650
675	675
700	700
725	725
750	750
800	800
850	850
900	900
950	950
1000	1000
1060	1060
1120	1120
1180	1180
1250	1250
1320	1320
1400	1400
1500	1500
1600	1600
2000	2000



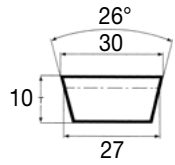
SECTION 26X8 W25

CODE	NOMINAL PITCH LENGTH LD (mm)
W 25P	560
W 25P	690
W 25P	710
W 25P	750
W 25P	790
W 25P	800
W 25P	900
W 25P	1000
W 25P	1120
W 25P	1250
W 25P	1400
W 25P	1613



SECTION 28X8

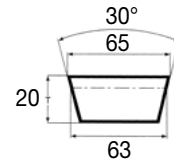
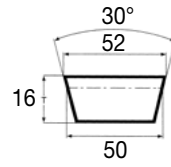
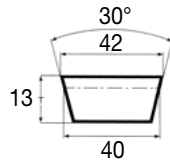
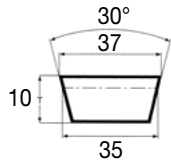
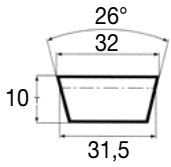
CODE	INTERNAL LENGTH LI (mm)
525	525
600	600
625	625
650	650
700	700
750	750
800	800
850	850
900	900
950	950
1000	1000
1060	1060
1120	1120
1180	1180
1250	1250
1320	1320
1400	1400
1500	1500
1600	1600
1700	1700



SECTION 30X10

CODE	INTERNAL LENGTH LI (mm)
650	650
665	665
700	700
800	800
850	850
875	875
900	900
950	950
1000	1000
1035	1035
1050	1050
1120	1120
1200	1200
1320	1320
1340	1340
1500	1500
1600	1600

VARISECT



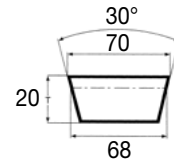
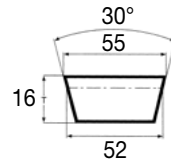
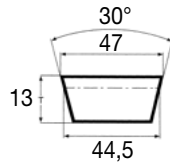
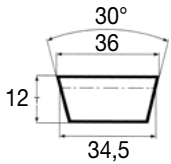
SECTION 32X10 W31,5	
CODE	NOMINAL PITCH LENGTH LD (mm)
W 31,5P	800
W 31,5P	840
W 31,5P	870
W 31,5P	900
W 31,5P	950
W 31,5P	1000
W 31,5P	1050
W 31,5P	1120
W 31,5P	1250
W 31,5P	1400
W 31,5P	1600
W 31,5P	1800
W 31,5P	2000

SECTION 37X10	
CODE	INTERNAL LENGTH LI (mm)
600	600
650	650
675	675
750	750
800	800
850	850
900	900
950	950
1000	1000
1060	1060
1120	1120
1180	1180
1250	1250
1320	1320
1400	1400
1500	1500
1600	1600
1700	1700
1800	1800
1900	1900
2000	2000
2240	2240

SECTION 42X13 W40	
CODE	NOMINAL PITCH LENGTH LD (mm)
W 40P	1060
W 40P	1100
W 40P	1120
W 40P	1180
W 40P	1250
W 40P	1400
W 40P	1600
W 40P	1660
W 40P	1820
W 40P	2000
W 40P	2240
W 40P	2500

SECTION 52X16 W50	
CODE	NOMINAL PITCH LENGTH LD (mm)
W 50P	1250
W 50P	1400
W 50P	1600
W 50P	1800
W 50P	2000
W 50P	2240
W 50P	2500
W 50P	2800
W 50P	3150

SECTION 65X20 W63	
CODE	NOMINAL PITCH LENGTH LD (mm)
W 63P	1600
W 63P	1800
W 63P	2000
W 63P	2240
W 63P	2500
W 63P	2800
W 63P	3150
W 63P	3550
W 63P	4000



SECTION 36X12	
CODE	INTERNAL LENGTH LI (mm)
700	700
725	725
800	800
850	850
900	900
950	950
1000	1000
1060	1060
1120	1120
1180	1180
1250	1250
1320	1320
1400	1400
1500	1500
1600	1600
1700	1700
1800	1800
2000	2000
2120	2120

SECTION 37X10	
CODE	INTERNAL LENGTH LI (mm)
600	600
650	650
675	675
750	750
800	800
850	850
900	900
950	950
1000	1000
1060	1060
1120	1120
1180	1180
1250	1250
1320	1320
1400	1400
1500	1500
1600	1600
1700	1700
1800	1800
1900	1900
2000	2000
2240	2240

SECTION 47X13	
CODE	INTERNAL LENGTH LI (mm)
900	900
950	950
1000	1000
1060	1060
1120	1120
1180	1180
1250	1250
1320	1320
1400	1400
1500	1500
1600	1600
1700	1700
1800	1800
1900	1900
2000	2000
2240	2240

SECTION 55X16	
CODE	INTERNAL LENGTH LI (mm)
1180	1180
1250	1250
1400	1400
1600	1600
1700	1700
1800	1800
2000	2000
2240	2240

SECTION 70X20	
CODE	INTERNAL LENGTH LI (mm)
1320	1320
1400	1400
1445	1445
1500	1500
1600	1600
1700	1700
1800	1800
1900	1900
2000	2000
2120	2120
2240	2240
2360	2360
2500	2500
2800	2800

V-BELTS



ACCU-LINK®

POLYURETHANE ADJUSTABLE V-BELTS

Accu-link® adjustable V-belts are the ideal replacement substitute for conventional rubber V-belts.

Solve V-belt drive problems quickly, accurately & permanently, the ideal temporary replacement or permanent substitute for conventional rubber V-belts, Accu-link® V-belts combine superior strength, durability and quick, easy assembly to keep equipment up and running at the same running horse power ratings as rubber belts.

Constructed of urethane elastomer reinforced with a rugged, woven polyester fabric, Accu-link® V-belts are manufactured by a revolutionary new process which creates smooth, precise side profiles on each link. This smooth profile creates less vibration and requires lower drive tensions for increased belt life.

Designed to any drive application, Accu-link® V-belts are available in the most popular sizes: Z/3L A/4L, B/5L, and C sections in roll and sleeve. What's more, Accu-link® V-belts maintain precise tension, so they deliver maximum power on multiple-belt drives.

CHOOSE ACCU-LINK® FOR:

- Durability
- Easy Assembly
- Fast Installation
- Maximum Horsepower
- Dependability

FEATURES:

- Durable urethane coating precision machined sides for smooth engagement
- Rugged, woven polyester fabric for strength and longer belt life
- Accu-link® cross section ideal for diverse operating environments
- Accu-link® V-belt urethane construction offers superior resistance to most common industrial solvents and chemicals, oil, water and extreme temperatures, from -25°C to 80°C.
- Accu-link® V-belts dissipate heat so they run cooler than conventional belts.

Installation is a snap installation and assembly is as easy as a snap and a twist. No special tools are required to couple or uncouple each Accu-link® V-belt. Belts can be made to accommodate any length, which makes them ideal for emergency repairs and replacements. Once assembled, Accu-link® V-belts are installed in a fraction of the time needed for endless rubber belts. Accu-link® V-belts are installed in minutes without removing outboard bearings or moving motors.

Suited to harsh environments, Accu-link® V-belts are ideal for the metal processing, machine tool, agricultural, packaging, coal and aggregate, pulp and paper, lumber, marine, air moving, petrochemical, woodworking, conveying and food industries, HVAC.



	RANGE			
	Z/3L	A/4L	B/5L	C
5' SLEEVE	X	X		X
6' SLEEVE		X	X	
25' ROLL	X	X	X	X
50' ROLL				X
100' ROLL	X	X	X	

V-BELTS



MEGAWELD

THERAMOWELDABLE BELTS

Megaweld thermoplastic polyurethane, trapezoidal and round belts are manufactured by a unique extrusion process. They are suitable for a wide range of applications and industries.



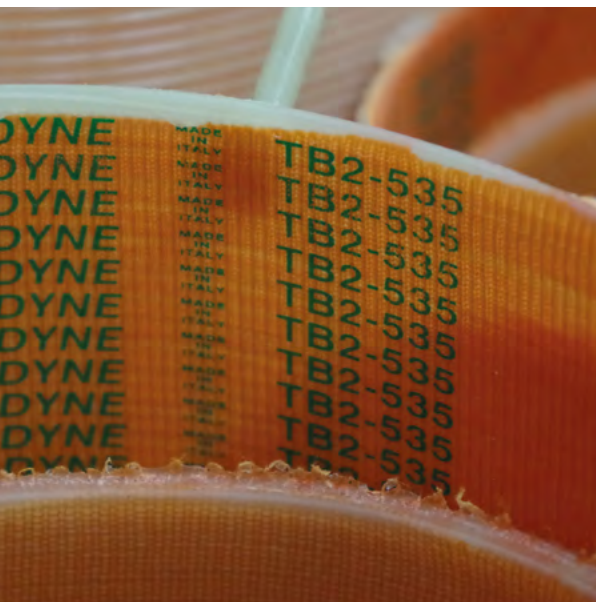
MEGAWELD ARE USED FOR CONVEYING OR FOR LIGHT POWER TRANSMISSION IN THE FOLLOWING AREAS:

- Ceramic industry
- Glass industry
- Wood industry
- Brick and tile industry
- Gardening and horticulture
- Packaging industry
- Paper and board industry
- Pharmaceutical industry
- Food industry
- Robotic systems
- Automotive

V-BELTS		
CODE	HARDENESS	SECTION
PT85 / PTD85	85 SHA	Z / A / B / C / D
PT85RK / PTD85RK	85 SHA	Z / A / B / C / D
PT90 / PTD90	90 SHA	Z / A / B / C / D
PT90RK / PTD90RK	90 SHA	Z / A / B / C / D
PT100 / PTD100	100 SHA – 55 SHD	Z / A / B / C



ROUND BELT		
CODE	HARDENESS	SECTION
PR85	85 SHA	Ø 3 :- 18 MM
PR85NL	85 SHA	Ø 2 :- 15 MM
PR85RK	85 SHA	Ø 6 :- 18 MM
PR90	90 SHA	Ø 2 :- 18 MM



MULTI-RIB BELTS

MEGADYNE ROLLPOWER™
PV - RUBBER RIBBED BELTS
MEGARIB - PU RIBBED BELTS

MEGADYNE ROLLPOWER™

MEGADYNE ROLLPOWER

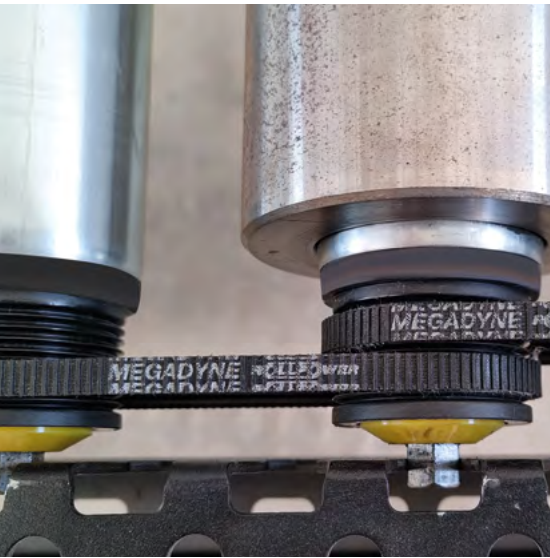
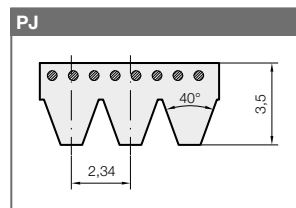
Megadyne Rollpower™ the new elastic rubber ribbed belt designed to outperform in roller conveyor applications.

The belt is made with EPDM compound (2-3-4 ribs) and with elastic high-strength, low-stretch polyamide cords.

The main features and benefits are related to efficiency, cost and energy-saving:

- Stable tension over time
- Smooth, reliable and quiet running
- Long belt life due to superior wear, aging and abrasion resistance
- Fast and easy installation and replacement
- Reduce line downtime
- Excellent grip
- Speed up to 3 m/s
- Fully loaded stops and starts

MEGADYNE ROLLPOWER™ IS AVAILABLE IN PJ PITCH AND FOLLOWING LENGTHS:



BELT BODY

EPDM compound; 2-3-4 ribs; other options on request.

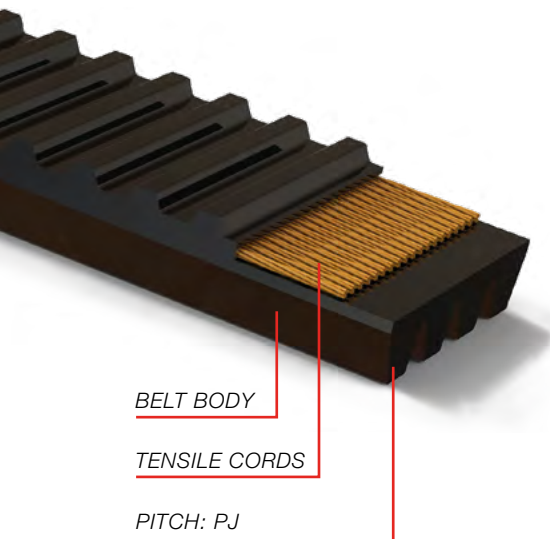
TENSILE CORDS

Elastic high-strength, low-stretch polyamide cords.

PITCH: PJ

Cogged back only for sizes 364 mm and under.

For sizes larger than 364 mm a standard flat backing will be provided.



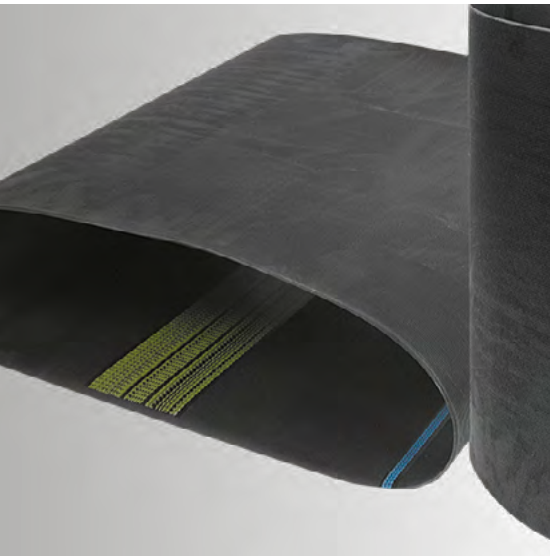
ROLLPOWER™ BELTS

BELT CODE	LENGTH (mm)	LENGTH (inches)
206JELRPW	205	8,07
214JELRPW	217	8,55
236JELRPW	235	9,25
246JELRPW	248	9,75
256JELRPW	260	10,24
263JELRPW	265	10,45
265JELRPW	267	10,53
270JELRPW	269	10,57
272JELRPW	269	10,59
282JELRPW	283	11,14
286JELRPW	285	11,20
290JELRPW	291	11,45
292JELRPW	294	11,59
302JELRPW	303	11,93
307JELRPW	305	12,02
314JELRPW	314	12,36
316JELRPW	320	12,60
336JELRPW	336	13,23
340JELRPW	340	13,39
346JELRPW	346	13,62
364JELRPW	364	14,33

STANDARD ELASTIC BELTS

BELT CODE	LENGTH (mm)	LENGTH (inches)
376JELRPW	376	14,82
381JELRPW	380	14,97
416JELRPW	404	15,89
432JELRPW	432	16,99
452JELRPW	452	17,81
486JELRPW	484	19,04
511JELRPW	511	20,12
518JELRPW	518	20,40
536JELRPW	538	21,19
558JELRPW	558	21,96
591JELRPW	591	23,25
609JELRPW	609	23,98
616JELRPW	616	24,23
636JELRPW	644	25,36
664JELRPW	664	26,14
682JELRPW	682	26,85
693JELRPW	693	27,30
716JELRPW	716	28,20
746JELRPW	745	29,34
759JELRPW	759	29,90

MULTI-RIB BELTS



STANDARD RUBBER RIBBED

PV BELTS

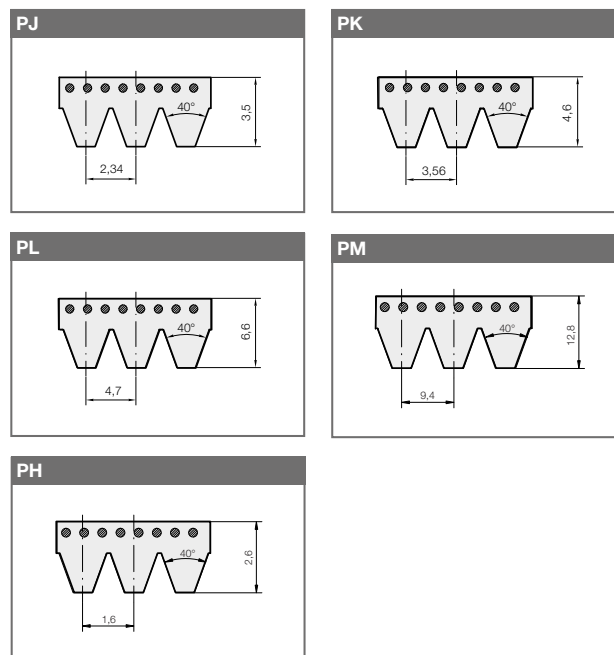
PV standard rubber ribbed belts are made of polybutadiene compound and produced in PH, PJ, PK, PL and PM profiles.

PV BELTS DESIGN:

- Eliminates belt matching
- Permits drive design to meet exact power or space requirements
- Distributes the drive load across the entire belt width
- Permits cooler running and high drive efficiency
- Excels on small pulleys at high speeds

PV ribbed belts are also available in elastic version (TEM) and they are suitable in the transmission where fixed centre distance is required. The TEM belt is developed according to the customer requirements.

STANDARD RANGE:



MULTI-RIB BELTS

STANDARD RUBBER RIBBED BELTS

PJ	
EFFECTIVE LENGTH	
(mm)	(inches)
350	13,8
381	15,0
406	16,0
432	17,0
457	18,0
483	19,0
495	19,5
508	20,0
533	21,0
559	22,0
584	23,0
610	24,0
635	25,0
650	25,6
660	26,0
685	27,0
711	28,0
723	28,5
737	29,0
762	30,0
769	30,3
790	31,1
813	32,0
864	34,0
895	35,2
914	36,0
944	37,2
955	37,6
965	38,0
990	39,0
1016	40,0
1036	40,8
1040	40,9
1051	41,4
1065	41,9
1080	42,5
1089	42,9
1092	43,0
1100	43,3
1108	43,6
1116	43,9
1136	44,7
1143	45,0
1150	45,3
1160	45,7
1168	46,0
1170	46,1
1184	46,6
1190	46,9
1194	47,0
1200	47,2
1203	47,4
1210	47,6
1214	47,8
1222	48,1
1232	48,5
1236	48,7
1244	49,0
1262	49,7
1270	50,0
1280	50,4

1287	50,7
1295	51,0
1301	51,0
1302	51,3
1315	51,8
1318	51,9
1321	52,0
1326	52,2
1365	53,7
1371	54,0
1397	55,0
1428	56,2
1473	58,0
1524	60,0
1549	61,0
1600	63,0
1651	65,0
1752	69,0
1854	73,0
1895	74,6
1910	75,2
1930	76,0
1956	77,0
2083	82,0
2135	84,1
2210	87,0
2337	92,0
2489	98,0

PK	
EFFECTIVE LENGTH	
(mm)	(inches)
588	23,1
630	24,8
650	25,6
675	26,6
700	27,6
730	28,7
755	29,7
775	30,5
800	31,5
830	32,7
845	33,3
870	34,3
875	34,4
885	34,8
920	36,2
925	36,4
950	37,4
970	38,2
1000	39,4
1015	40,0
1035	40,8
1060	41,7
1080	42,5
1145	45,1
1165	45,9
1200	47,2
1230	48,4
1300	51,2
1335	52,6
1385	54,5
1420	55,9
1460	57,5

1490	58,7
1520	59,8
1555	61,2
1610	63,4
1655	65,2
1700	66,9
1725	67,9
1755	69,1
1800	70,9
1860	73,2
1885	74,2
1900	74,8
1980	78,0
2050	80,7
2080	81,9
2145	84,5
2235	88,0
2330	91,7
2490	98,03
2555	100,59

PL	
EFFECTIVE LENGTH	
(mm)	(inches)
953	37,5
991	39,0
1041	41,0
1074	42,3
1080	42,5
1100	43,3
1150	45,3
1168	46,0
1194	47,0
1219	48,0
1270	50,0
1295	51,0
1321	52,0
1334	52,5
1372	54,0
1397	55,0
1422	56,0
1435	56,5
1473	58,0
1498	59,0
1511	59,5
1562	61,5
1613	63,5
1651	65,0
1664	65,5
1715	67,5
1765	69,5
1803	71,0
1842	72,5
1943	76,5
1956	77,0
1981	78,0
2019	79,5
2070	81,5
2096	82,5
2134	84,0
2197	86,5
2235	88,0
2324	91,5

2362	93,0
2477	97,5
2515	99,0
2705	106,5
2743	108,0
2845	112,0
2896	114,0
2921	115,0
2997	118,0
3086	121,5
3124	123,0
3289	129,5
3327	131,0
3493	137,0
3696	145,5
4051	159,5
4191	165,0
4470	176,0
4623	182,0
5029	198,0

PM	
EFFECTIVE LENGTH	
(mm)	(inches)
2286	90,0
2388	94,0
2515	99,0
2693	106,0
2832	111,5
2921	115,0
3010	118,5
3124	123,0
3327	131,0
3531	139,0
3734	147,0
4089	161,0
4191	165,0
4470	176,0
4648	183,0
5029	198,0
5410	213,0
6121	241,0
6883	271,0
7646	301,0
8408	331,0
9169	361,0
9931	391,0
10693	421,0
12217	481,0
13741	541,0
15266	601,0
16764	660,0

PH	
EFFECTIVE LENGTH	
(mm)	(inches)
584	23,0
1025	40,4
1030	40,6
1068	42,0
1140	44,9
1164	45,8
1184	46,6
1200	47,2
1210	47,6
1265	49,8
1809	71,2
1831	72,1
1856	73,1
1872	73,7
1891	74,4
1900	74,8
1915	75,4
1922	75,7
1930	76,0
1945	76,6
1975	77,8



MEGARIB

PU RIBBED BELTS

Megarib belts are manufactured in polyurethane with polyester high tension cords, which combine the high flexibility of flat belts with the power transmission capability of V-belts.

MEGARIB FEATURES:

- Dimensional stability
- High flexibility
- Small pulley diameters
- High speeds
- Excellent oil, water and ozone resistance

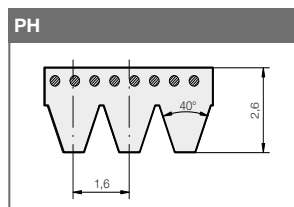
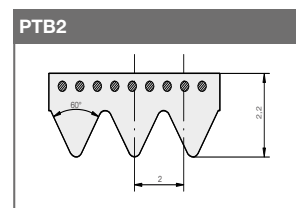
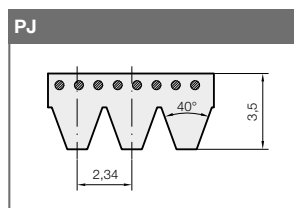
On request, special elastic Megarib belts can be manufactured in polyurethane with a semi-elastic tension member. They can be fitted on fix centre drives, reducing noise and vibrations. The absence of a tensioning mechanism, offers additional cost savings.

Standard Megarib belts are available in a wide variety of rib pitches and length (see below).

THE MAIN APPLICATIONS ARE:

- Food processors
- Grass cutting equipment
- Electrical household appliances
- Washing machines
- Electrical tools
- Woodworking equipment
- Domestic power tools

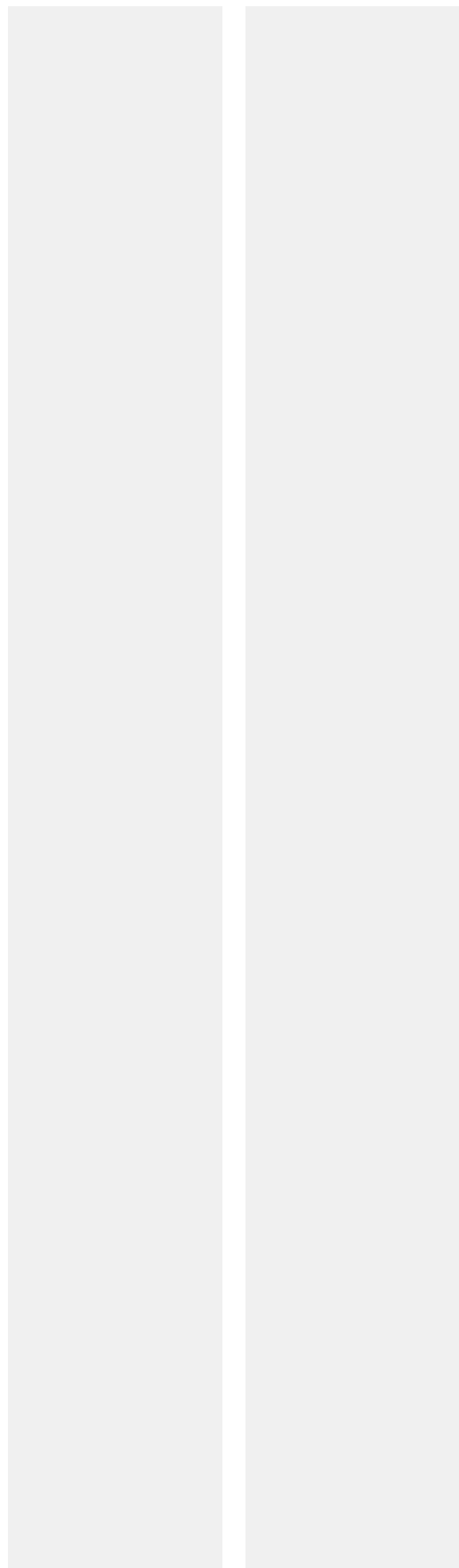
STANDARD RANGE:

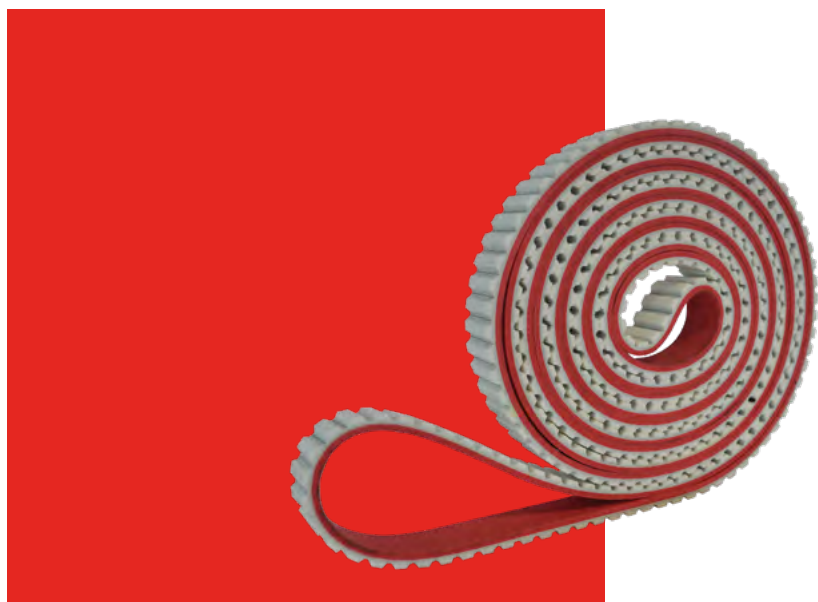


MULTI-RIB BELTS

MEGARIB

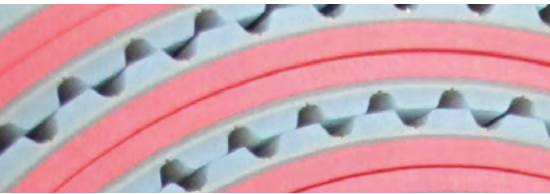
PJ		PTB2		PH	
STANDARD LENGTH		STANDARD LENGTH		STANDARD LENGTH	
(mm)	(inches)	(mm)	(inches)	(mm)	(inches)
220	8,7	156	6,1	223	8,8
271	10,7	170	6,7	269	10,6
275	10,8	200	7,9	295	11,6
278	10,9	220	8,7	330	13,0
283	11,1	231	9,1	340	13,4
288	11,3	248	9,8	345	13,6
304	12,0	266	10,5	375	14,8
317,5	12,5	295	11,6	389	15,3
330	13,0	310	12,2	507	19,9
345	13,6	330	13,0	588	23,1
356	14,0	345	13,6	609	24,0
381	15,0	360	14,2	650	25,6
392	15,4	380	15,0	768	30,2
406	16,0	390	15,4	935	36,8
431	17,0	400	15,7	1000	39,4
444	17,5	430	16,9	1086	42,8
457	18,0	480	18,9	1120	44,1
483	19,0	510	20,1	1163	45,8
508	20,0	526	20,7	1203	47,4
558	22,0	535	21,1	1240	48,8
584	23,0	575	22,6	1775	69,9
610	24,0	598	26,5		
630	24,8	630	24,8		
660	26,0	660	26,0		
681	26,8	675	26,6		
711	28,0	725	28,5		
762	30,0	770	30,3		
864	34,0	1186	46,7		
914	36,0				
953	37,5				
1010	39,8				
1086	42,8				
1120	44,1				
1163	45,8				
1202	47,3				
1239	48,8				
1268	49,9				
1397	55,0				





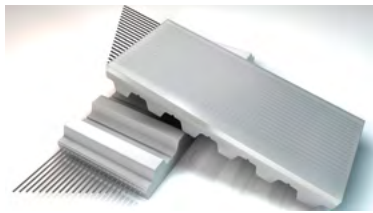
SPECIAL & FABRICATED BELTS

COVERS
CLEATS
FALSE TEETH
PPJ SYSTEM
SPECIAL MODIFICATIONS



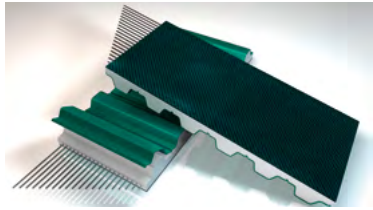
COVERS

SPECIAL & FABRICATED BELTS



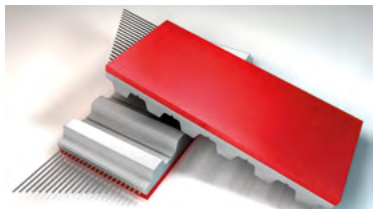
AVAFC 60/70/85 SHA

Cover is used for conveying abrasive materials, with high friction especially on smooth and dry surfaces, with good (60 & 70 ShA) to very good (85 ShA) abrasion resistance.



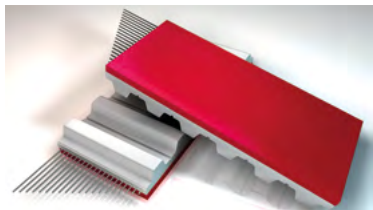
NFT/NFB NYLON FABRIC (TEETH AND BACK)

NFT/NFB offers low friction for accumulation as well as low noise benefits and is usually applied by co-extrusion on base belts. Antistatic version in black color available.



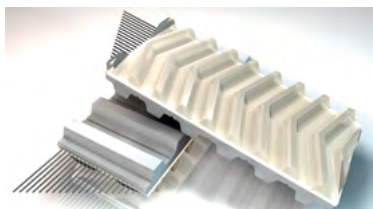
APL

Seamless cover used as an alternative to natural rubber offering a high friction and good resistance to oil and water.



RED GRIP

Seamless cover used as an alternative to natural rubber offering a high friction and a very good oil and abrasion resistance. Only available on MEGAFLEX.



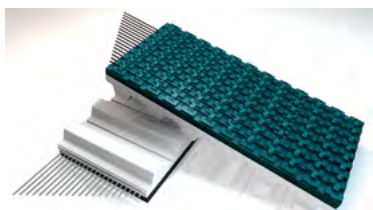
PU FISHBONE

Cover suitable for wet environments as in the glass industry where friction and drainage are necessary. Very good water and abrasion resistance.



PU RIBBED

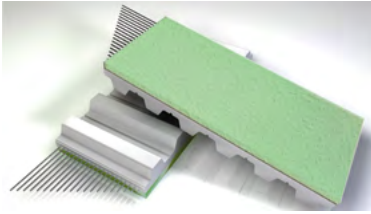
Cover with reduced contact points for conveying sensitive products in material handling applications with very good water and abrasion resistance. Allows drain of liquids.



SUPERGRIP PETROL

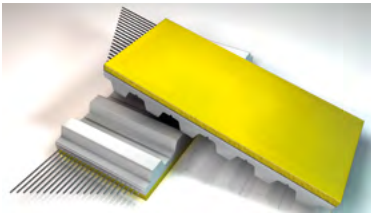
PVC Cover with high CoF, applicable for slight height compensation, low shock absorption capabilities. Improved adhesion even in case of moisture and dirt - for incline, feed and take-a-way conveying applications. Seamless weldable on MEGALINEAR and MEGAFLEX.

COVERS



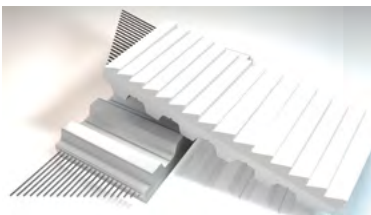
SYLOMER BLUE, GREEN, BROWN

Cover with low density offers high dynamic load capacity for light and sensitive parts up to top pressure belts and glass moving applications with a good water resistance.



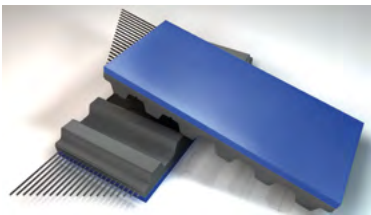
PU YELLOW

Sprayed endless, available in different hardness and colours widely-used foam with very good abrasion resistance. Used in paper and glass industry. Due to easy mechanical processing very popular for vacuum transport application.



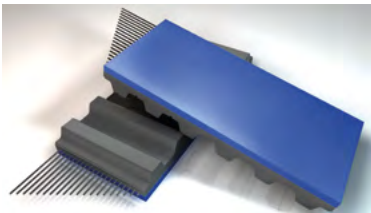
PVC SAW TOOTH

FDA clear pattern for improved adhesion under wet conditions line contact, resistant against acids and bases.



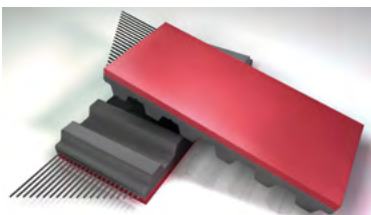
BLUE GRIP

NR/BR Cover 57 ShA with a improved abrasion resistance and a high friction. Universally applicable as alternative to natural rubber. Only available on rubber base belts.



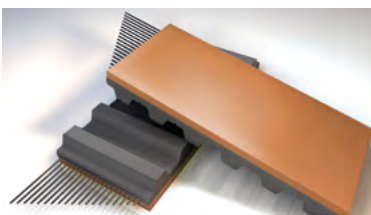
HTX - SILBLUE

Cover offers high temperature and UV resistance. Non-marking compound common used in printing applications. Only available on rubber base belts.



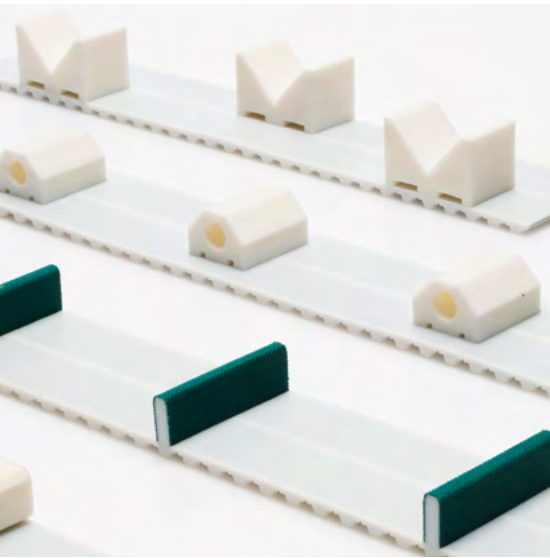
RED NATURAL RUBBER 40

Cover offers low durometer ShA and very good high friction; applicable on any kind of conveyor or feeding application.



DURATAQ®

Natural Premium Rubber Cover with specific designed compound to reach a very good abrasion resistance with a very high coefficient of friction. Successfully installed in medium and heavy load conveyance as cable puller applications.



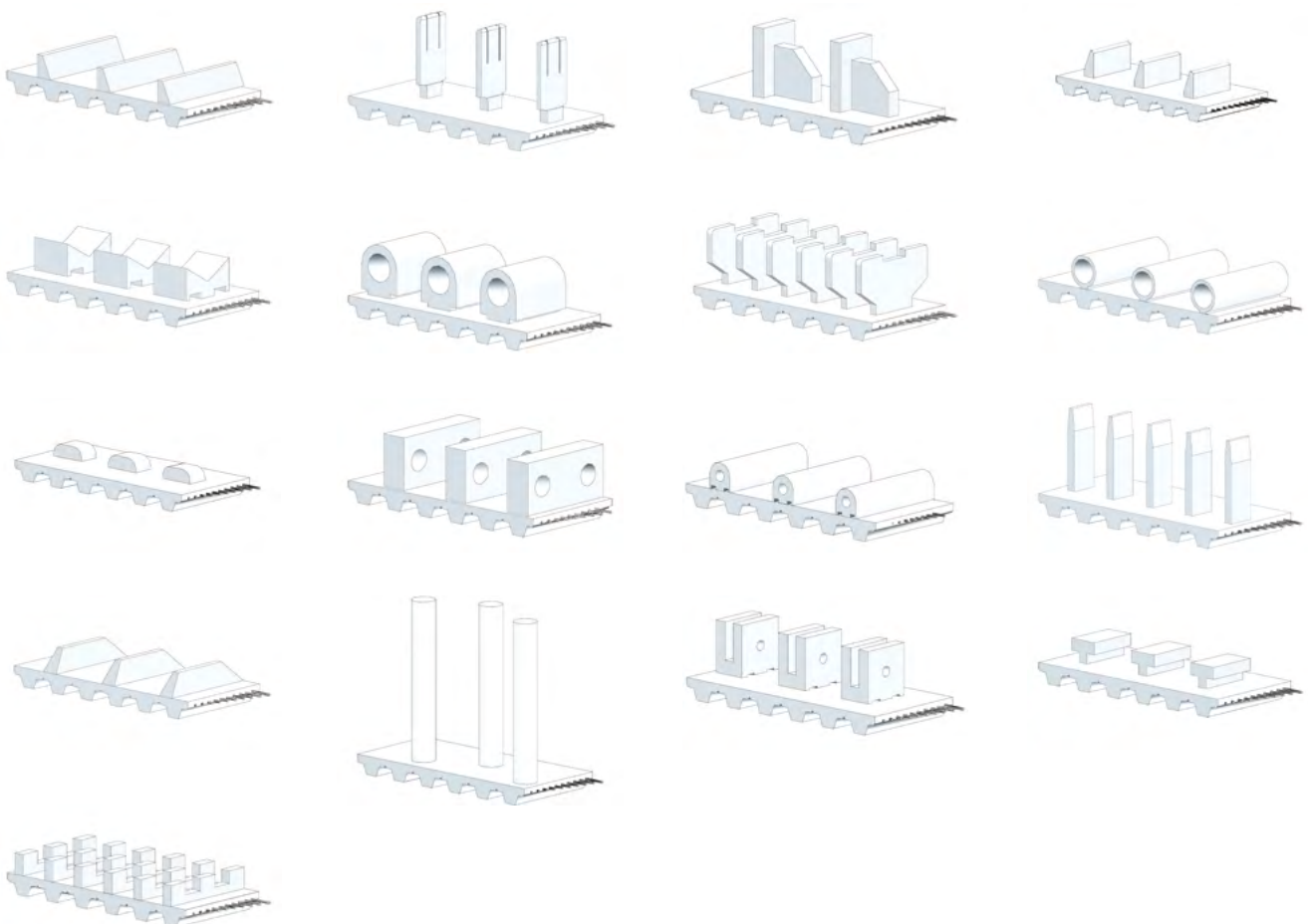
CLEATS

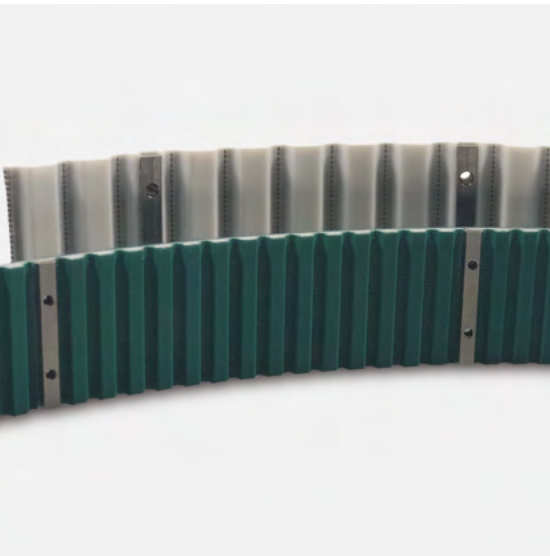
SPECIAL & FABRICATED BELTS

Megadyne timing belts can be customised by vulcanizing profiles vulcanized on their back. All the cleats are made using thermoplastic polyurethane. The cleats are attached using high frequency vibration welding.

The production process for these profiles is very flexible; Megadyne can design any profile to meet the specific customer requirement.

EXAMPLES





FALSE TEETH

SPECIAL & FABRICATED BELTS

Megadyne has developed a new solution of mechanical profile application system specially designed for attaching cleats that cannot be welded onto polyurethane timing belts: False tooth system (FTS).

This mechanical mounting system for timing belts allows quick and easy exchange of individually designed cleats of different material (steel, urethane, UHMW, plastic, wood).

Now it is available a wide range of metallic false teeth with highly versatile and innovative system for attaching cleats in various positions, allowing synchronized feeding and product handling.

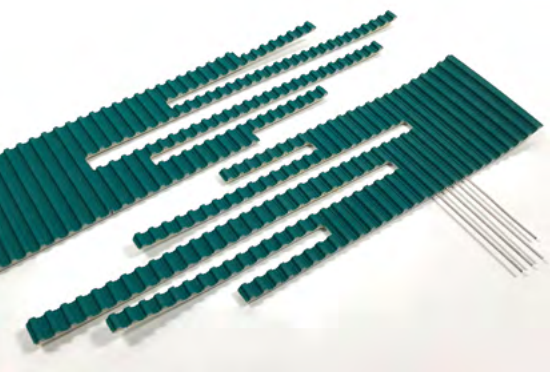
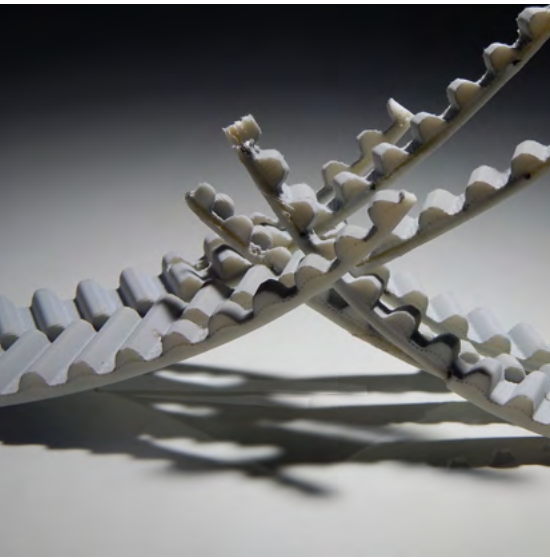
The belt can run smoothly around pulleys because the threaded inserts are embedded within the milled teeth.

FTS ADVANTAGES INCLUDE:

- Easy exchange at any time.
- Can transmit much higher loads than welded profiles.
- Low cost in spare part in case of wear and tear.
- Reduction cost in assembly.
- Easy cleats fixing operation.
- Different cleat's material can be used.
- False tooth in stainless steel suitable for food & pharmaceutical industry.
- Not need to remove the belt in case of cleats replacement.
- High precision on profile positioning.
- Available on MEGALINEAR joined, MEGAFLEX and MEGAPOWER in all possible executions as NFT or NFB, FDA, steel, aramid or stainless-steel cord, with or without self-tracking guide.

MEGAC4T

The fastening system of the exchangeable profile in the tooth of the belt allows a quick assembly and makes the belt extremely versatile – the same belt can be equipped with different profiles for individually transported goods without de-installation. The highly variable profile pitch will standardize any application.



PPJ SYSTEM

SPECIAL & FABRICATED BELTS

TECHNICAL FEATURES:

- Reduced load capacity when compared to standard joined belts.
- Created to allow the jointing of belts directly on the machine.
- Allows a very fast belt replacement.
- The back of the belts is virtually flat.
- Born for conveying applications only, max suggested speed is 120 m/min.
- Pin materials according to AISI302.
- Rolls with NFT, NFB, AVAFC, APL, Fishbone, Ribbed and Supergrip can be PPJed.
- Minimum splice length of 700 mm.

PPJ AVAILABILITY

SECTION	WIDTH* (mm)	LENGTH* (mm)
T10 25	25	180
T10 32	32	220
T10 50	50	220
T10 75	75	240
T10 100	100	320
T20 32	32	260
T20 50	50	320
T20 75	75	340
AT10 25	25	180
AT10 32	32	220
AT10 50	50	220
AT10 75	75	240
AT10 100	100	320
AT20 32	32	260
AT20 50	50	320
AT20 75	75	340
MTD8 20	20	128
MTD8 30	30	176
MTD8 50	50	176
MTD8 85	85	192
MTD8 100	100	256
RPP8 20	20	128
RPP8 30	30	176
RPP8 50	50	176
RPP8 85	85	192
RPP8 100	100	256
TG10 50	50	220
ATG10 50	50	220

**For different widths and/or lengths, please contact us.*



SPECIAL MODIFICATIONS

SPECIAL & FABRICATED BELTS

Megadyne can make special extrusions on customer request to enhance specific belt properties and to better suit special applications. Process enhancements, skilled personnel, a can-do attitude and ongoing capital equipment investments enable Megadyne to stay at the forefront of new design developments and solution delivery to customers across the spectrum of industries we serve. Let a Megadyne Technical Sales and Application Engineer create the right belt to deliver optimum performance for your application.

PROFILES GROUND IN COVER

A belt back can be ground to achieve a precise belt thickness as an adjunct to precision drives. When belt back grinding to a tolerance is required, the total thickness, including the tooth, must be specified.

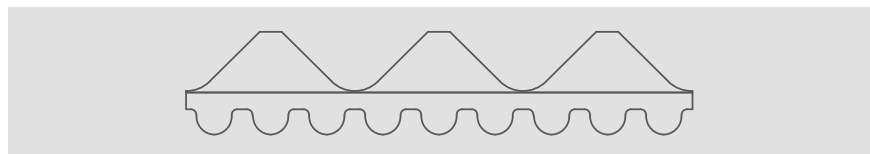
LONGITUDINAL REWORK

Longitudinal rework along the belt back is possible on covered and uncovered belts. The profile can be machined precisely for required function. The measurement is given as the depth on the belt back. Most widths and lengths are available.

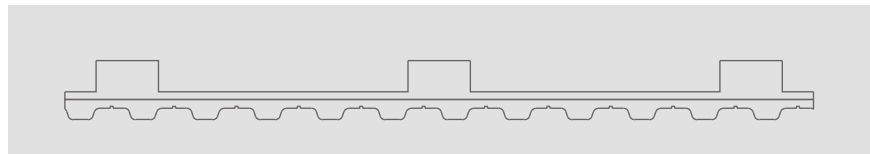
HOLES IN TIMING BELTS

Holes in timing belts can be for vacuum or air film conveying or as clearance for assembly mechanisms. Stops and cams can be attached through the holes. Customized tooling may be required depending on the layout and dimensions of holes required.

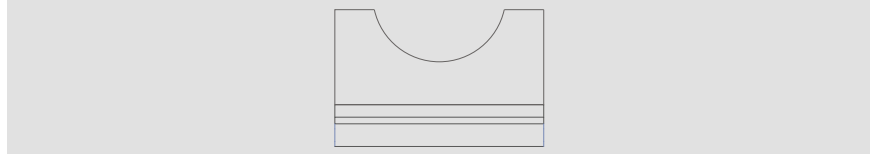
PROFILES GROUND IN COVER



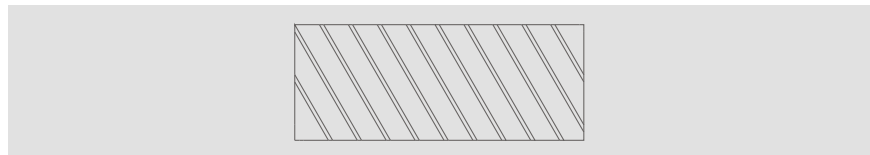
LUG GRIND



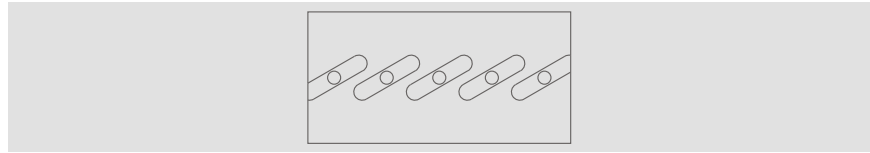
CONVEX GRIND



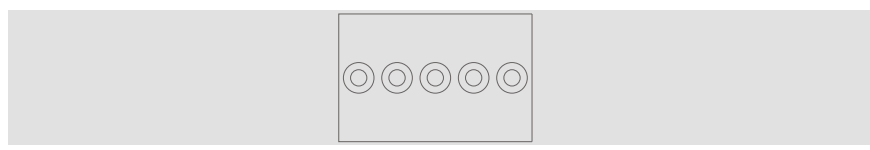
DIAGONAL GROOVES

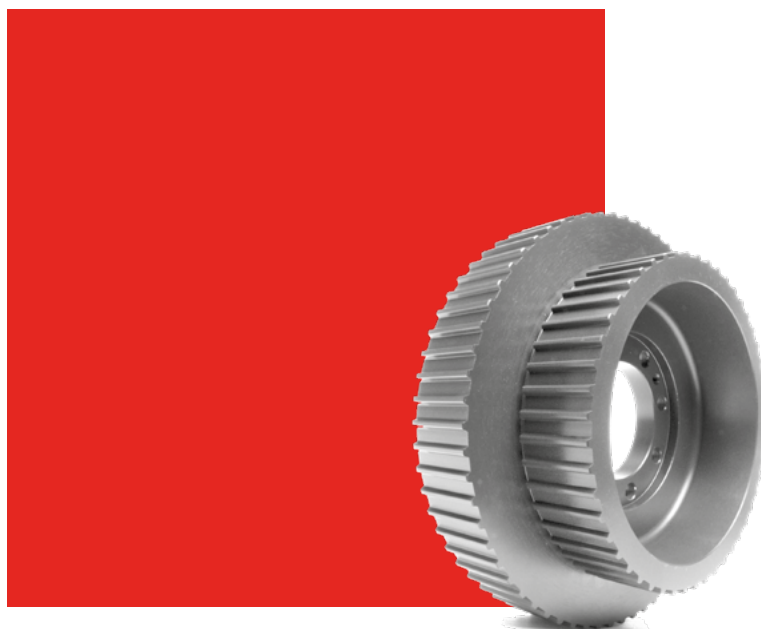


SLOTS WITH HOLES



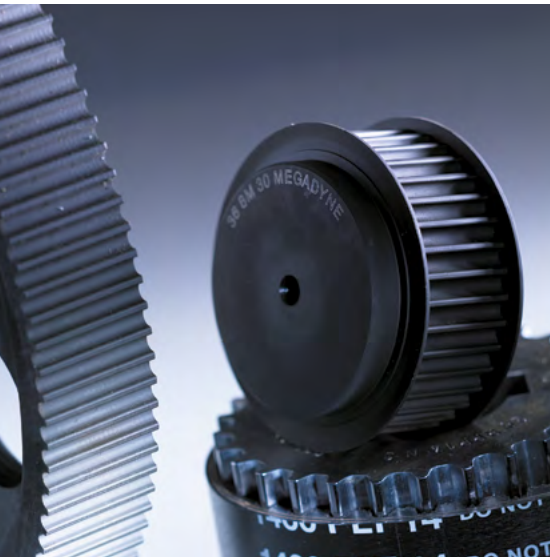
COUNTERSINKS WITH HOLES





METAL DRIVE COMPONENTS

METAL DRIVE COMPONENTS



Megadyne stocks and supplies an extensive range of pulleys and accessories like timing bars, taper bushes, flanges, clamping plates, toothed couplings SG, torsional flexible couplings SG and SG-HRC couplings to offer a complete drive transmission system.

Megadyne power transmission components can be designed to meet all the customer requirements.



PULLEYS

Megadyne can supply a complete drive system.

A large range of standard and custom made pulleys are available for many kinds of industrial applications:

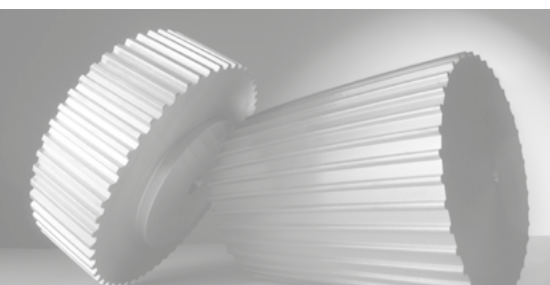
- Timing belts pulleys (metric pitch, HTD profile, GW)
- V-belt pulleys
- Adjustable pulleys



FLANGES FOR PULLEYS

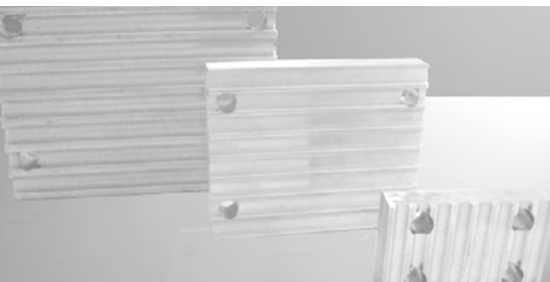
Flanges on request for custom-made pulleys. Our high-quality timing pulley flanges are ideal for:

- Custom pulleys for specific applications
- Quick and inexpensive prototypes
- Unique material and performance specifications



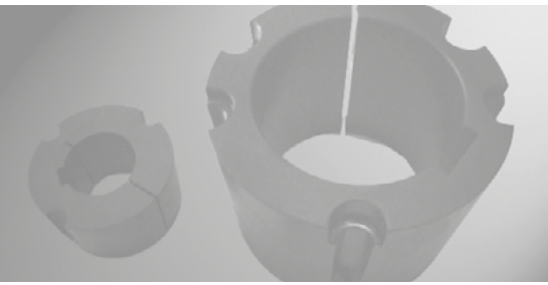
TIMING BARS

Timing bars are toothed steel or aluminium cylinders, available in standard or custom made to drawing.



CLAMPING PLATES

Clamping Plates are used to clamp timing belt ends.



TAPER BUSHES

The taper bushes allow easy mounting and quick removal of the transmission, thus eliminating the clearance between shaft and bore. Megadyne is able to provide a range of different types of taper bushes, each with a wide range of hole diameters and different types of keyway.



MOTOR SLIDES FOR ELECTRIC MOTORS

The motor slides for electric motors allow the tension adjustment or disassembly of the belt without removing the electric motor.



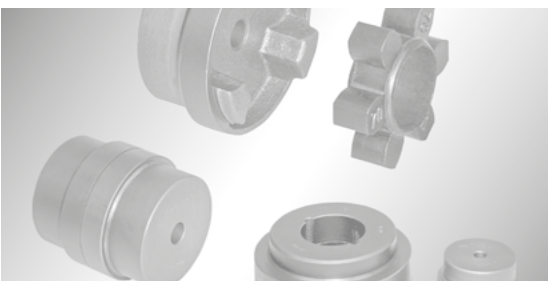
TORSIONAL FLEXIBLE COUPLINGS SG

Couplings are elements connecting two rotating shafts. The design of flexible couplings is characterized by two cast iron hubs having each stubby protrusions around their perimeters pointing toward the opposite hub. The two hubs mesh loosely together, and the gaps between them are filled with blocks of elastomeric material, moulded into an asterisk-shaped element called "spider".



TOOTHED COUPLINGS SG

Flexible gear coupling with double curving.



SG-HRC COUPLINGS

SG-HRC Couplings are essentially general purpose couplings with a flexible element which can accommodate higher degree of misalignment.



ACCESSORIES

DTM-CONNECT ACOUSTIC STRAND TENSION METER

DTM-connect is the acoustic tension meter used for quick and easy measurement of the belt tension, also called strand tension, belt strand force or belt tension force.

Optimal belt tension is necessary to ensure a long service life of the belt and a trouble-free operation of your drive.

The device is fully electronic and equipped with the latest microprocessor technology for simple, high-precision measurements.

It is suitable for all belt types, e.g. V-belts, toothed and power belts or ribbed belts, which are in the measuring frequency range between 10 and 600 Hz. The type, colour and quality of the belt have no influence on the measurement result.

DTM-CONNECT: SCOPE OF DELIVERY AND DEVICE DESCRIPTION

- Small sensor head
- Flexible gooseneck
- Stable hard case
- OLED display
- On/Off button
- 3 function keys for menu control
- Connection for charging cable
- USB-C charging cable
- Europlug

DTM-CONNECT - FEATURES:

- Non-contact, acoustic measurement technology with a highly sensitive sensor for exact
- belt tension measurement
- Suitable for all belt and tension member types
- Small sensor head on a flexible gooseneck for measurements even in areas difficult to access
- Ergonomic shape for optimal one-hand use
- Integrated, rechargeable lithium polymer battery
- Additional functions via the use of a custom app

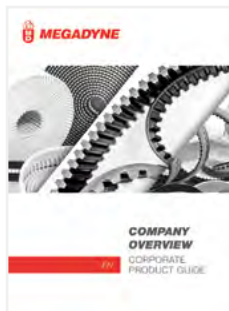
MEGADYNE BELTS MEASURING GAUGE

Measurement range from 500mm to 2500mm internal length (Li). Megadyne belts measuring gauge can be easily mounted on the wall.



LITERATURE

CATALOGS AND HANDBOOKS



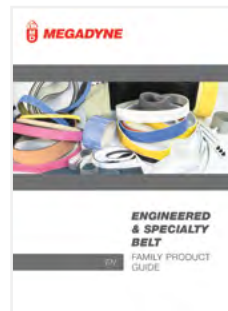
PRODUCTS GUIDE

General informations about the full range of products.



LEAFLET

Short introduction to Megadyne's products.



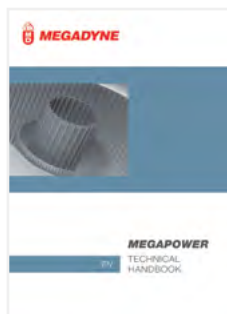
SPECIALTY PRODUCTS GUIDE

General information about special products and reworkings.



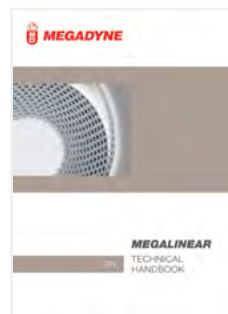
BELTING SOLUTIONS FOR FOOD

Megadyne belting solutions and Food industry case studies



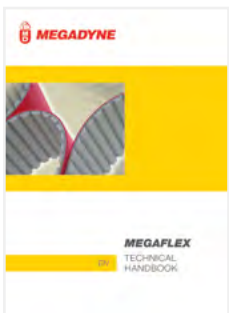
MEGAPOWER

Calculation handbook for PU moulded timing belts.



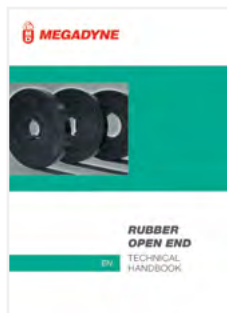
MEGALINEAR

Calculation handbook for PU open and joined belts.



MEGAFLEX

Calculation handbook for PU endless timing belts.



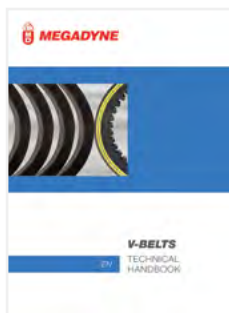
RUBBER OPEN-ENDED

Calculation handbook for rubber open-ended timing belts.



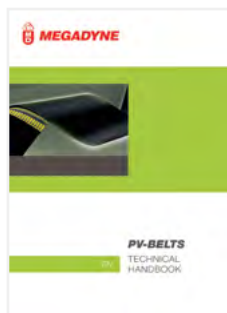
MEGASYNC™

Calculation handbook for MEGASYNC™.



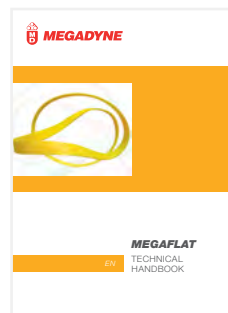
V-BELTS

Calculation handbook for rubber V-belts.



PV-BELTS

Calculation handbook for PV-belts.



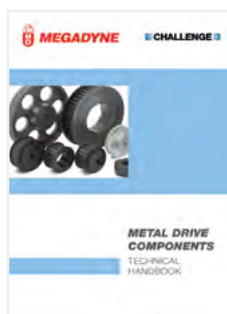
MEGAFLAT

Handbook about PU flat belts.



MEGAWELD

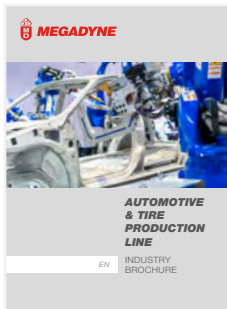
Handbook about PU round and V-belts.



METAL DRIVE COMPONENTS

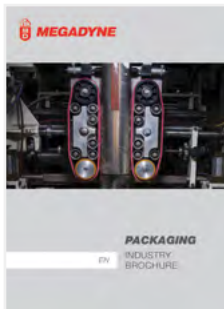
Calculation handbook about power transmission components.

INDUSTRY APPLICATIONS BROCHURES



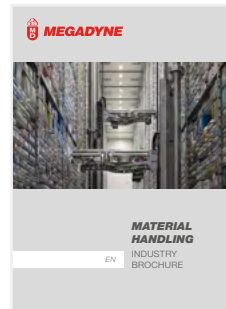
AUTOMOTIVE & TIRE

Sector leaflet about automotive and tire production line.



PACKAGING

Sector leaflet about Megadyne belts in packaging industry.



MATERIAL HANDLING

Sector leaflet about Megadyne belts in material handling industry.



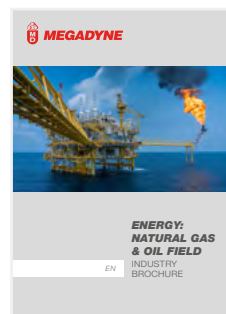
MARBLE & CERAMIC

Sector leaflet about Megadyne belts in marble and ceramic industry.



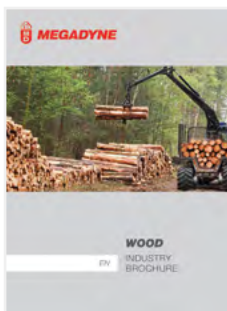
ELEVATOR

Sector leaflet about Megadyne belts in elevator industry.



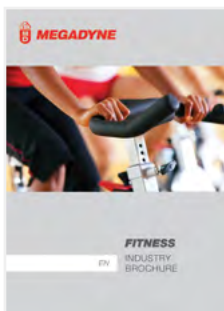
OIL & GAS

Sector leaflet about Megadyne belts in energy industry.



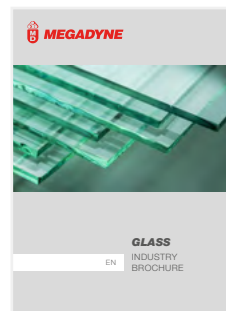
WOOD

Sector leaflet about Megadyne belts wood industry.



FITNESS

Sector leaflet about Megadyne belts fitness applications.



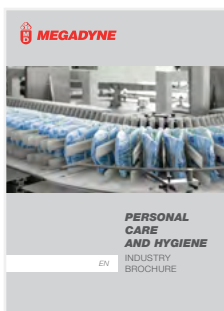
GLASS

Sector leaflet about Megadyne belts in glass industry.



PAPER & PRINT

Sector leaflet about Megadyne belts in Paper and Print industry.



HYGIENE

Sector leaflet about Megadyne belts in Hygiene Personal Care industry

PRODUCT LEAFLETS



MEGASYNC™ PRODUCT FAMILY

General information about rubber endless timing belts



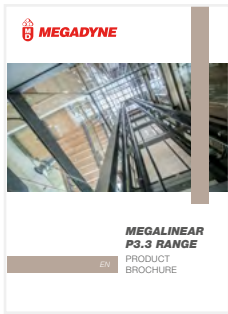
MEGASYNC™ Titanium

General information about Titanium belts



ROLLPOWER™

General information about Rollpower™ belt.



MEGALINEAR P3.3

General information about Megalinear P3.3 belt.



MEGALINEAR FC-S

General information about Megalinear FC-S belt.



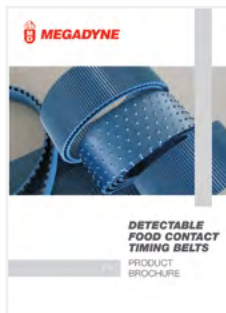
QST SYSTEM

General information QST belts, pulleys and clamping plates.



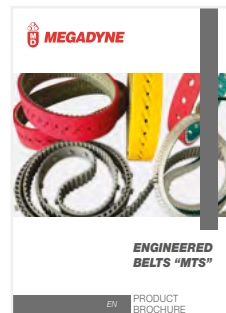
FOOD CONTACT TIMING BELTS

General information about food contact timing belts.



XMD TIMING BELTS

General information about XMD Timing belts.



ENGINEERED BELTS "MTS"

General information about engineered belts available on stock



ACCU-LINK®

General information about adjustable link belt.

The data and information contained in the present catalogue are updated to the date of the catalogue's printing. Ammega Italia S.p.A. reserves the right to modify the specifications, performances and other information relating to the belts described in the present catalogue, at any time at its own discretion, without any prior notice. For updating refer to our website www.megadynegroup.com. Technical specifications, performances and other information provided in the present catalogue are indicative and do not bound Ammega Italia S.p.A. unless such specifications, performances or other information are expressly agreed in the agreement with the customer.

We also recommend to read carefully the following documents on our web site www.megadynegroup.com:

- Ammega Italia S.p.A. General Conditions of Sale (comprising the warranty)
- Theoretical Belt Life
- Drive Components: Storage, Installation, Maintenance and Troubleshooting Handbook
- Belts standard use condition and temperature.

Copyright Notice: Ammega Italia S.p.A. copyright. All rights reserved.

Ammega Italia S.p.A. is and shall remain the owner of all rights on drawings, technical specifications and any other information contained in the present catalogue or otherwise communicated by Ammega Italia S.p.A. to the customer.

The customer shall not disclose such information to third parties or use such information for purposes different from the definition of the order to Ammega Italia S.p.A., unless upon prior written authorization of Ammega Italia S.p.A.



Ammega Italia S.p.A.
ITALY - MATHI

Discover Your Local Contacts

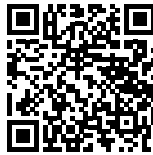
The local partner of choice
for sustainable power transmission belting solutions
around the globe.



General contact information:

Megadyne

Via Trieste, 16
Via S. Lucia 114 - 10075 Mathi (Torino)
Italy



Scan the QR code
and find your local
contact

