



MEGADYNE



***PERSONAL
CARE
AND HYGIENE***

INDUSTRY
BROCHURE

EN



HYGIENE INDUSTRY

The Personal Care and Hygiene sector includes products ranging from diapers, feminine hygiene and wipes to paper goods such as tissues, toilet paper and napkins. Cosmetics and toiletries also fall within this scope, requiring complex, multi-stage processes such as forming, assembly, filling and packaging. Facilities must meet strict FDA standards, ensuring efficiency and high hygiene. Megadyne provides tailored solutions that optimise production while maintaining quality and environmental responsibility.

Megadyne has been catering to your needs since 1957, designing and manufacturing power transmission belts, matched components, and complete belt systems for all types of equipment. We are a reliable partner for original equipment manufacturers and aftermarket distributors, with:

Nine manufacturing plants in Europe, North America, and Asia, more than 170 Customer Solution Centres and three main distribution hubs around the world, able to deliver products efficiently to everywhere from large industrial sites to remote locations.

BELT PROPERTIES



MEGADYNE MEGASYNC™ RUBBER ENDLESS TIMING BELTS

SUPPLIED AS	Endless
LENGTH	248 - 4 956 mm
WIDTH	12 - 170 mm*
PITCH	L, H, RPP8, RPP14, SLV3 8M, SLV3 14M
TENSION MEMBER	Fiberglass
FEATURES	Supplied Endless for Power Transmission applications or highly customised sleeve for process conveying.

*Standard Width Range - Megadyne will cut to desired width upon request.



MEGADYNE POLYURETHANE TIMING BELTS

SUPPLIED AS	Open-ended roll - Endless - Joined - PPJ
LENGTH	MEGALINEAR 0.5 - 100 m / MEGAFLEX 1.5 - 22.60 m MEGAPOWER 225 - 2 250 mm
WIDTH	MEGALINEAR / MEGAFLEX 12 - 150 mm MEGAPOWER 6 - 75 mm
PITCH	T10, AT5, AT10, AT20, RPP14 XHP, QST8, QST14, GW14, GW20
TENSION MEMBER	Steel - HP - HF - HPF - Stainless Steel - Kevlar®
FEATURES	Superior wear and abrasion resistance; dimensional stability; range of options with special covers.



MEGALINEAR WIDE OPEN-ENDED

SUPPLIED AS	Open-ended roll - Joined
LENGTH	100 m
WIDTH	250 - 500 mm
PITCH	T5, T10, H, STD8
TENSION MEMBER	S and Z torsion Kevlar®
FEATURES	Superior wear and abrasion resistance; dimensional stability; range of options with special covers.



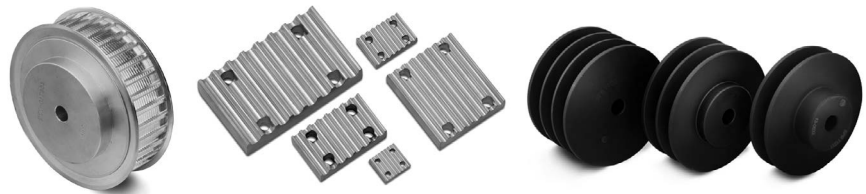
HYBRID BELTS	
SUPPLIED AS	Endless
MAX BELT WIDTH	2 000 mm
FEATURES	<p>Innovative belting technology, combining the positive drive features of timing belts together with advantages of conveyor belts. Hybrid belts are compatible with different conveyor base belts, with many profiles and coatings possible to suit specific applications.</p> <p>Hybrid belts offer benefits that ultimately lead to increased productivity. Some of these include: the ability to drive speeds of up to 550 m/min, precision positioning, smoother performance, greater energy efficiency and an increased service life of equipment.</p>



SPIRAFLEX	
SUPPLIED AS	Truly Endless Mesh Belt with sealed edges
MAX BELT WIDTH	2 000 mm
FEATURES	<p>Mesh Belt for gentle transportation of web without deformation during the core-forming process. The belt material is resistant to abrasion, temperature extremes and chemicals, with high static discharge and good product release characteristics.</p>

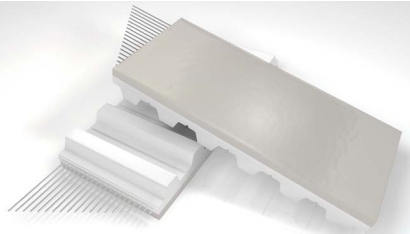
METAL DRIVE COMPONENTS

Use an extensive range of pulleys and accessories like timing bars, flanges, clamping plates, couplings to design a complete drive transmission system.



SPECIAL COVERS AND MODIFICATIONS

MEGASILCOAT WR43/35



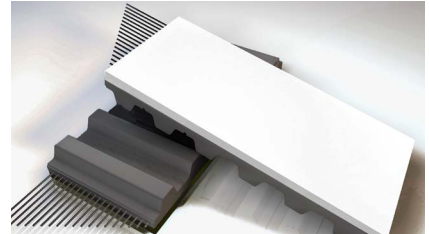
MATERIAL	Silicone
COLOUR	White/Black/Grey/ Transparent/Blue
Cover offers a good CoF and very good abrasion resistance.	

LEV-HT-4 (LEVAPREN®)



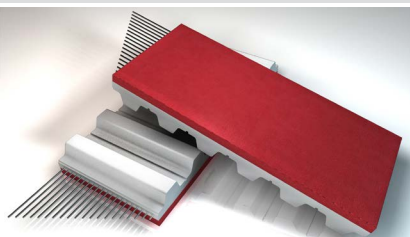
MATERIAL	EVA
COLOUR	Grey
Cover offers higher temperature applications than HNBR and even better oil resistance and exceptional abrasion resistance.	

LOW DURO WHITE NEOPRENE R92



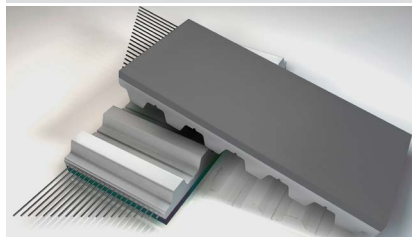
MATERIAL	Neoprene
COLOUR	White
Cover offers low Sha non-marking compound, high CoF and good wear resistance. Formulated with FDA materials.	

LINATEX™ RED



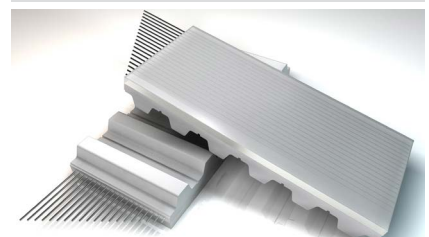
MATERIAL	Natural Rubber
COLOUR	Red
Cover offers high CoF, good wear resistance, and good suitability for wet conditions.	

PU GREY



MATERIAL	PU spray
COLOUR	Grey
Very good abrasion resistance and high grip against paper. Good machineability for vacuum holes and other modifications.	

AVAFC 60/70/85



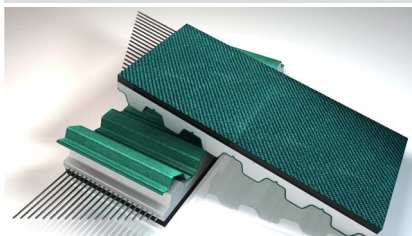
MATERIAL	Polyurethane
COLOUR	Transparent
Excellent cut and wear resistance and good oil resistance.	

POROL BLACK



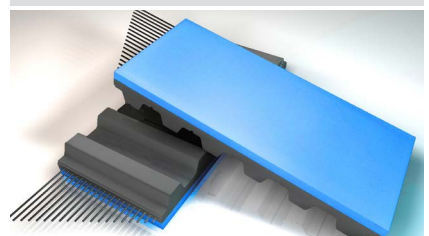
MATERIAL	Natural cellular rubber foam
COLOUR	Black
Cover is closed cell, soft elastic cellular rubber with good wear resistance. On request with Nylon cover for bottle descrambling.	

NFB/NFT



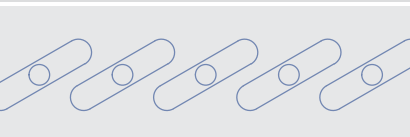
MATERIAL	Nylon Fabric
COLOUR	Green
NFT/NFB offers low friction for accumulation or sliding supports as well as low noise benefits and is usually applied through coextrusion on base belts.	

FDA BLUE NEOPRENE 65

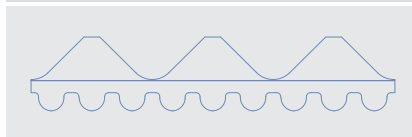


MATERIAL	Neoprene
COLOUR	Blue
Cover offers good resistance to weather elements and ozone-rich environments. Self extinguishing. Good resistance to acid solutions. Formulated with FDA materials. Only available on rubber base belts.	

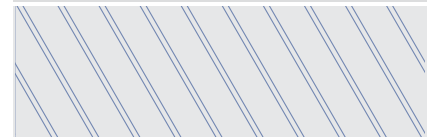
SLOTS WITH HOLES



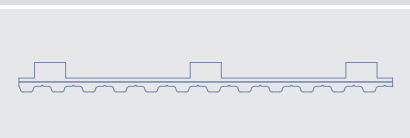
PROFILES GROUND INTO COVER



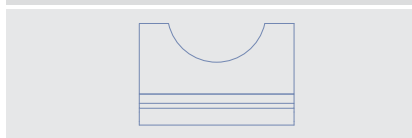
DIAGONAL GROOVES



LUG GRIND



CONVEX GRIND



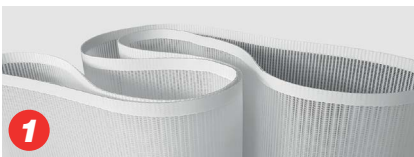
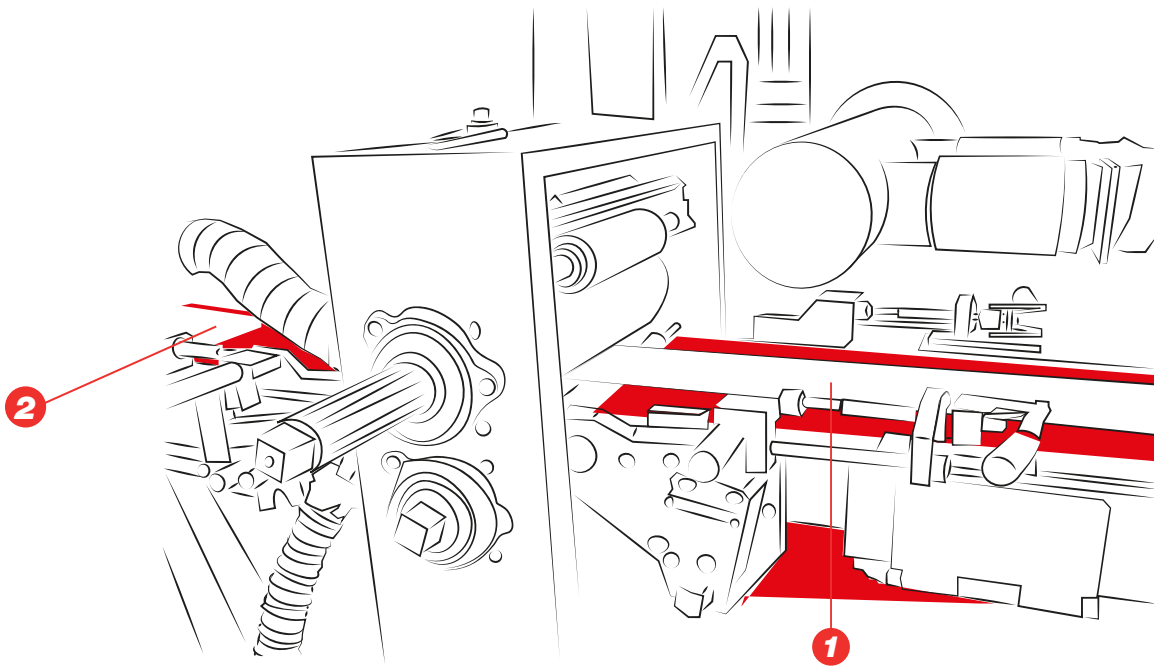
COUNTERSINKS WITH HOLES



Many more custom accessories, backing materials and fabrication steps possible as per requirements.

CORE ASSEMBLY

Cellulose fibers and SAP are deposited with precision onto a PP web, then folded and glued to form the absorbent core. Accuracy at this stage ensures performance and comfort.



SPIRAFLEX

- Excellent resistance against chemicals
- Sealed edges for non-fray
- Mesh structure allows low pressure and gentle force all along the webbing



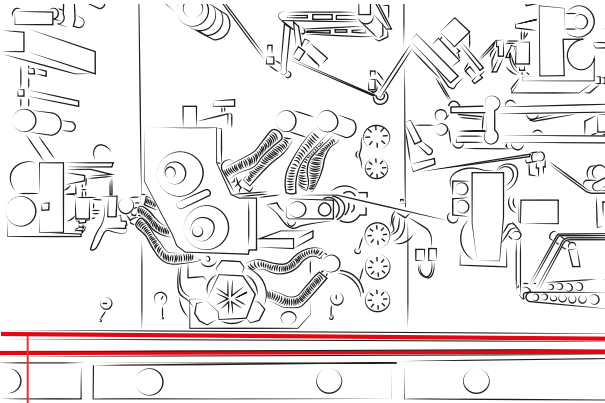
MEGASYNC™

- Rubber endless timing belts made of high-quality rubber compounds and wear resistant silicone coating
- High performance
 - Moulded to length and pitch designation

DIAPER ASSEMBLY

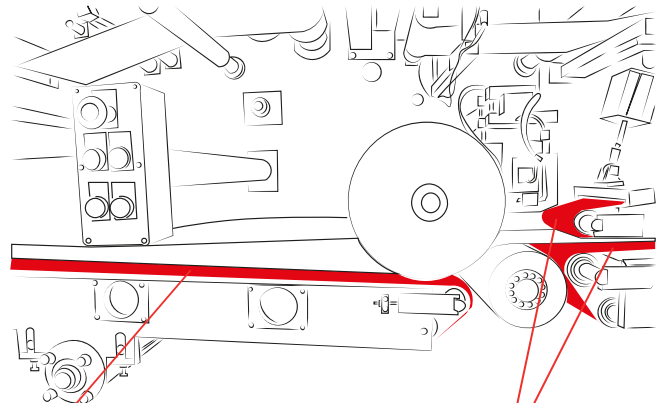
All diaper components are rapidly combined with high precision. Different versions may require silicone coatings for release (where ink and glue are present), while advanced belts ensure alignment and speed.

PRESENCE OF ADHESIVES AND INKS

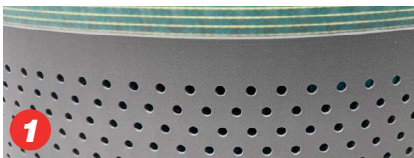


1 3 4 5

ABSENCE OF ADHESIVES AND INKS



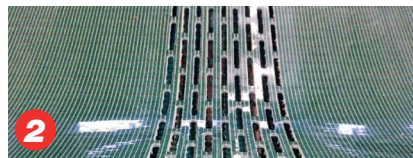
2 3 6



MEGALINEAR WIDE WITH SILICONE COVER

Wide thermoplastic polyurethane timing belts with Kevlar® cord and multiple tooth profiles available (H, T10, T5 & STD8)

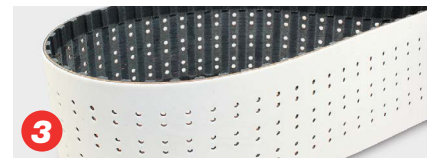
- High release, wear-resistant coating
- Safe handling despite traces of adhesives



MEGALINEAR WIDE

Wide thermoplastic polyurethane timing belts with Kevlar® cord and multiple tooth profiles available (H, T10, T5 & STD8)

- Can be customised with perforations, tooth removals
- Nylon fabric covering for reduced noise and friction reduction in support lanes



MEGASYNC™

Rubber endless timing belts made of high-quality rubber compounds, and wear resistant silicone coating

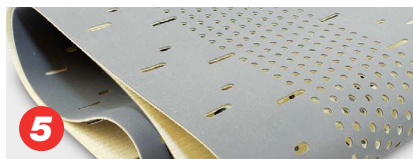
- High-performance
- Molded to length and pitch designation



HYBRID BELT

Leading industry construction consisting of a flat belt and timing belt for highest speeds achievable on any asset line

- Freely configurable with different timing belt specifications, including QST8 self tracking or even dual timing belts



MEGAFLAT WITH SILICONE COVER

Seamless knit solution for additional performance

- Excellent release with good grip
- Optimal high-speed performance and flexibility
- Small pulley diameters, energy efficient



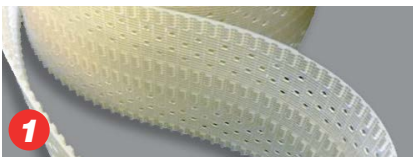
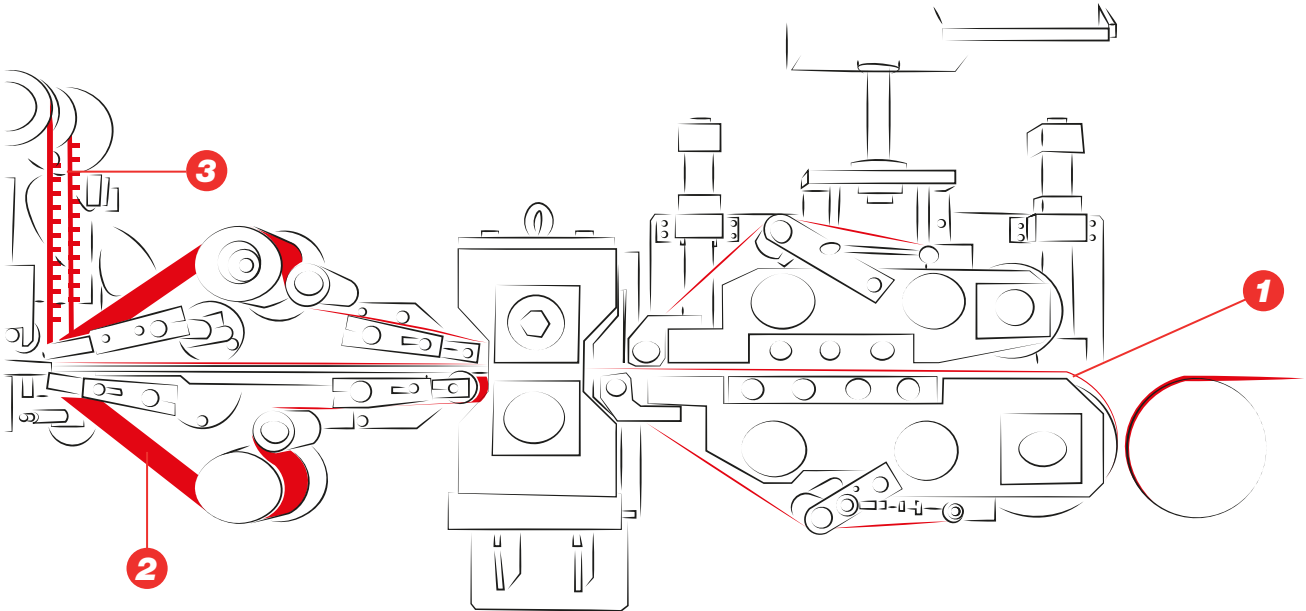
MEGASYNC™ WITH LEV-HT GREY

Truly endless 1-shot molded rubber timing belt for ultimate performance

- Chemical resistant compound
- Abrasion-resistant
- Good grip
- Anti-pilling

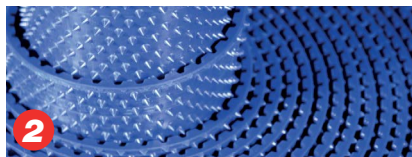
WET WIPES CONVERTING LINES

Nonwoven material is cut, folded and saturated, then compressed using timing belts. This process guarantees uniform, ready-to-pack wipes.



MEGALINEAR WIDE

Wide thermoplastic polyurethane timing belts with Kevlar® cord and multiple tooth profiles available (H, T10, T5 & STD8).



MEGALINEAR FC WITH PROFILE

Advanced FDA synchronous belts having excellent resistance to chemicals and corrosion. The Nipple profile guarantees non-stick transfer and easy release of wet material.



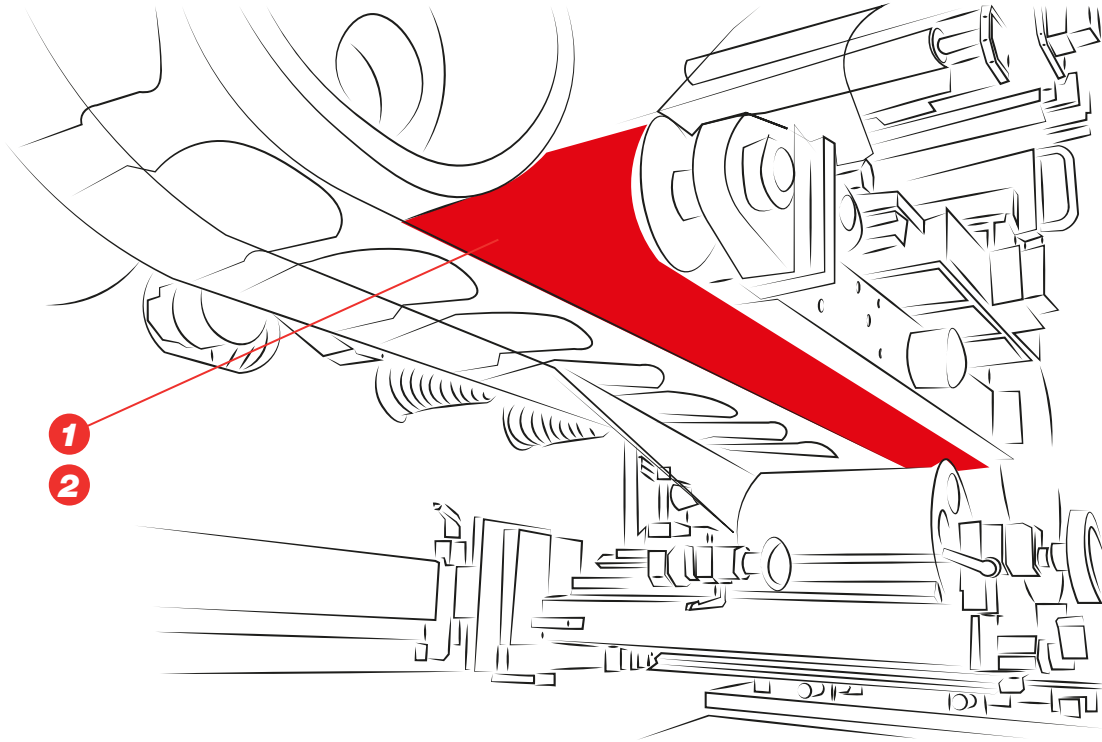
MEGALINEAR WITH CLEATS

Polyurethane timing belt with welded and custom cleats.

- High-frequency welding for maximum precision and adhesion
- Possibility of tailoring cleat profile to customer's needs

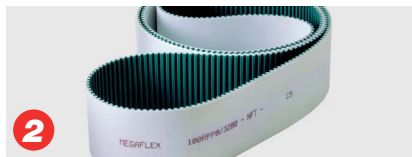
FEMININE CARE

Similar to diaper production, but with additional wrapping for hygiene and convenience. Individual packaging ensures quality and safety.



MEGAFLAT P0 WITH MEGASILCOAT AND PU GREY COVERS

- Seamless engineered machine tape
- Wear-resistant PU coating on bottom
 - Optimal high-speed performance and flexibility
 - Energy-efficient

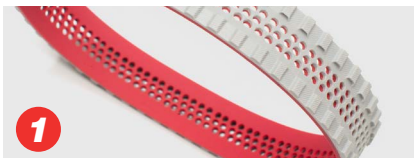
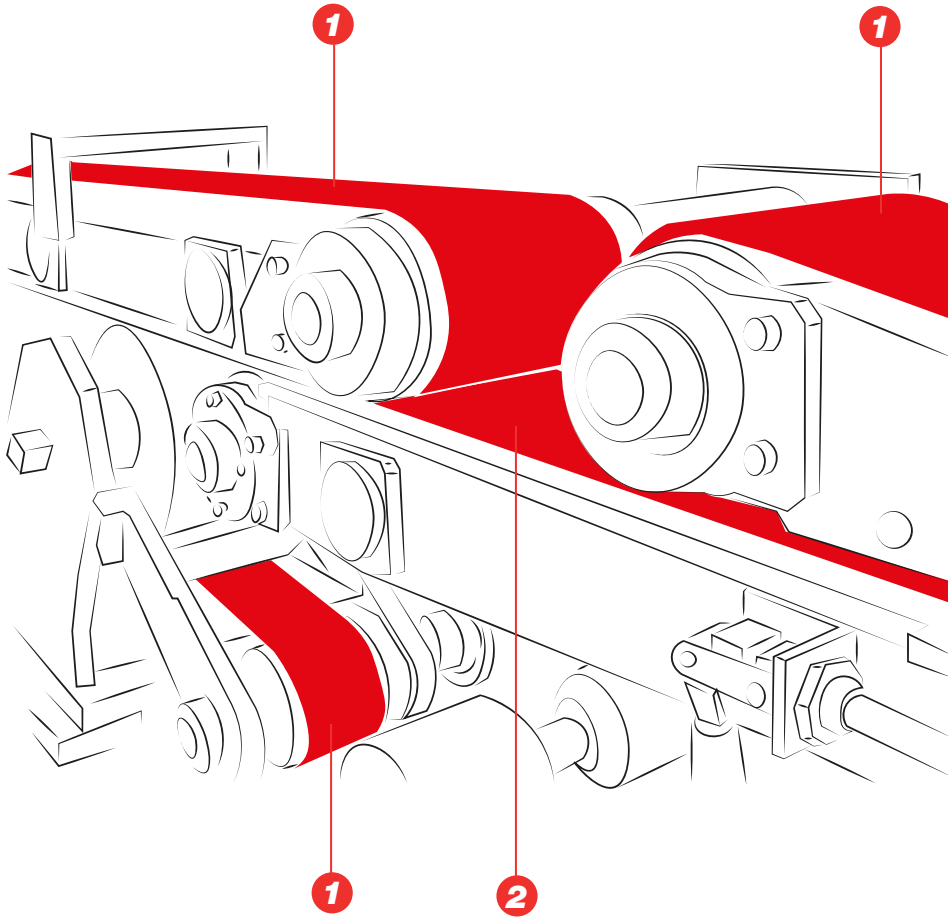


MEGAFLEX

- Truly endless timing belts with thermoplastic polyurethane and Kevlar cords.
- Customised with special covers
 - High CoF
 - Wear-resistant

FOLDING AREA

Products are compressed to remove air and folded once or twice depending on type. Specialized belts provide grip, resistance and durability.



MEGAPOWER WITH LINATEX AND PERFORATIONS

Truly Endless molded polyurethane belts, with Linatex cover and grinded teeth to ensure the best vacuum and grip performances.



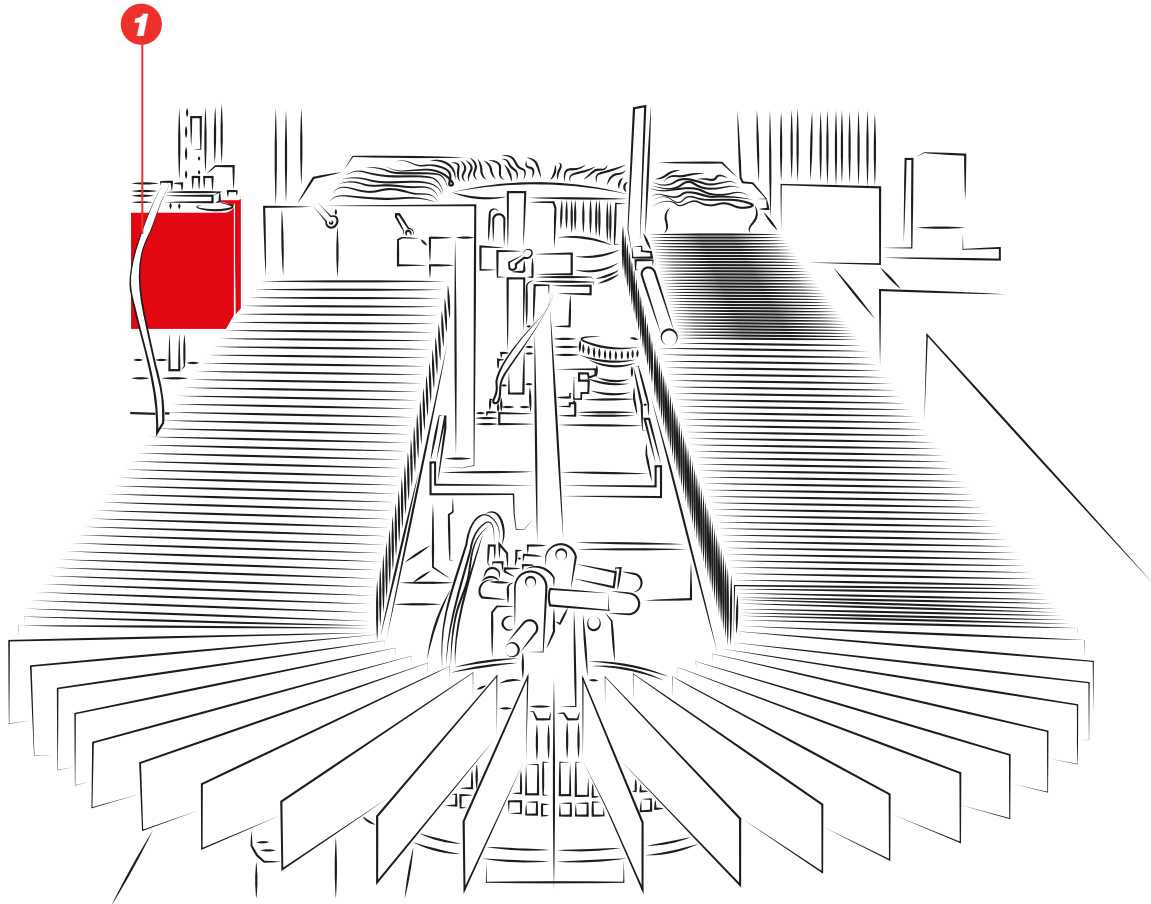
MEGASYNC™ LEV-HT GREY

Truly endless 1-shot molded rubber timing belt for ultimate performance

- Chemically resistant compound
- Abrasion-resistant
- Good grip

STACKED FOR INFEED

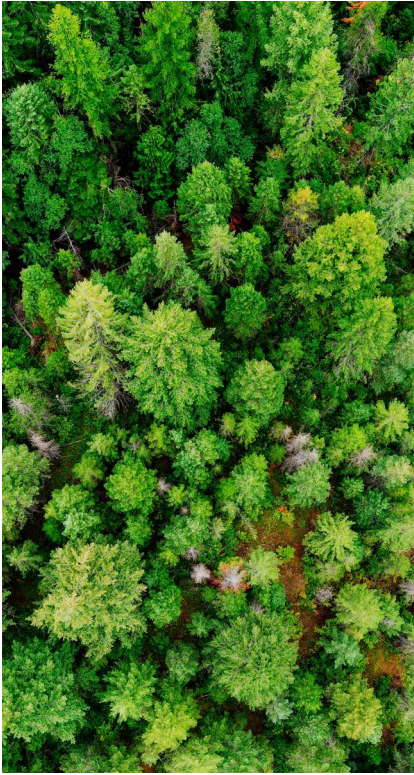
Finished items are aligned and stacked for infeed. This step ensures efficient filling into bags or cartons for final distribution.



MEGAFLAT

Seamless molded PU flat belts

- Optimal high-speed performance and flexibility
- Small pulley diameters, energy efficient



ABOUT SUSTAINABILITY

Sustainability has always been a guiding principle for Ammega and all the members of the AMMEGA Group. We are proud to work with **EcoVadis** to monitor and evaluate our environmental, social and ethical performance.

At Megadyne, we are committed to becoming more and more responsible towards the world by reducing our impact on the planet. We work with new technological raw materials made by partners using the most ecological sustainable technologies. Our team has been working on the continuous improvement of products, services and solutions for the benefit of society and the environment. Our vision is to be the local partner of choice for sustainable belting solutions around the globe.

Important sustainability achievements include improvements throughout the supply chain and in tracking our carbon footprint as well as the launch of new sustainable solutions for our clients. Major steps forward on sustainable investments are slowly bringing us closer to goals set in the Paris Agreement. We are on a journey towards a sustainable future, continually revising our plans and raising the level of our ambitions wherever possible. Our business performance and successes are key factors in defining our impact on the economic, social and natural environment. We take the responsibility for this impact for all stakeholders and make every endeavour to strengthen our roles as conscientious corporate citizens.

OTHER CERTIFICATIONS



All Megadyne polyurethane power transmission belts comply with ISO 14001, ISO 9001 and European RoHS Directive. The belts are made with raw materials in compliance with REACH standards, meaning that all belts, pulleys, toothed bars, couplings blocking units and other items supplied by Megadyne do not contain one (or more) of the SVHC in Candidate List above a concentration of 0.1% w/w.

All Megadyne rubber power transmission belts are made in accordance with the Quality Management System Standard: ISO 9001 and ISO 14001. These certificates are valid for the following application fields:

- Design, manufacture and sale of power transmission belts
- Marketing of transmission and transport components, including pulleys and tensiometers

Discover Your Local Contacts

The local partner of choice
for sustainable power transmission belting solutions
around the globe.

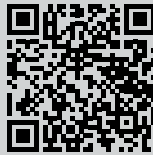


General contact information:

Megadyne

Via Trieste, 16
Via S. Lucia 114 - 10075 Mathi (Torino)
Italy

www.megadynegroup.com



Scan the QR code
and find your local
contact

